

Definitions

- What is Drought Reliability Water?

A quantity of water that is only needed periodically and is obtained and used only when needed.

- What is Supplemental Water?

An additional source of water that is available every year in a quantity that could provide water for any purpose such as meeting build-out demands and or provide water during drought conditions.

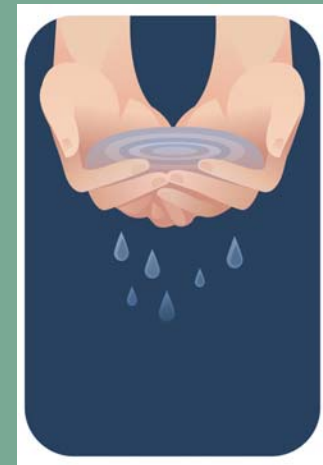


Regional Water Strategies

County Master Water Plan

Provides General Assessment of Communities Drought Issues

- Reliability of Existing Supplies
 - Water Conservation (voluntary vs mandatory)
-
- Exchange Programs
 - Banking Partners



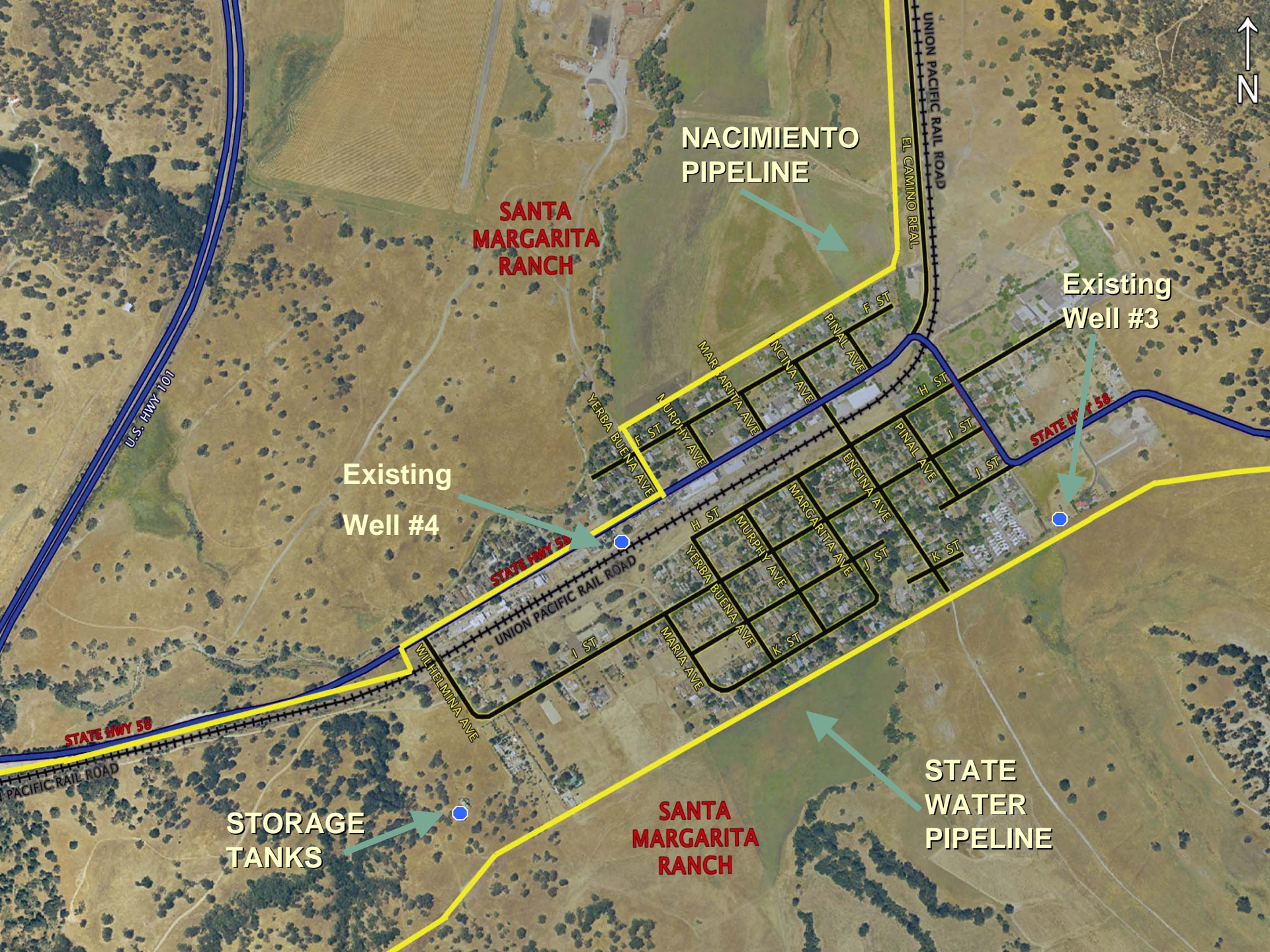
Exchange Programs/Banking Partners

- How do they work?
- Who is involved?
- What are the guarantees?



Examples:

- ✓ County Service Area No. 10 – Cayucos
- ✓ Northern Cities Management Area (NCMA)
- ✓ Heritage Ranch Community Services District



**NACIMIENTO
PIPELINE**

**SANTA
MARGARITA
RANCH**

**Existing
Well #3**

**Existing
Well #4**

**STATE
WATER
PIPELINE**

**STORAGE
TANKS**

**SANTA
MARGARITA
RANCH**



U.S. HWY 101

UNION PACIFIC RAIL ROAD
EL CAMINO REAL

STATE HWY 58

STATE HWY 58

STATE HWY 58

UNION PACIFIC RAIL ROAD

WILHELMINA AVE

UNION PACIFIC RAIL ROAD

PINAL AVE

ENCINA AVE

MARGARITA AVE

MURPHY AVE

MARIA AVE

YERRA BUENA AVE

YERRA BUENA AVE

MARGARITA AVE

PINAL AVE

ENCINA AVE

MURPHY AVE

YERRA BUENA AVE

MARIA AVE

PINAL AVE

ENCINA AVE

MARGARITA AVE

MURPHY AVE

MARIA AVE

YERRA BUENA AVE

YERRA BUENA AVE

MARGARITA AVE

PINAL AVE

ENCINA AVE

MURPHY AVE

YERRA BUENA AVE

MARIA AVE

PINAL AVE

ENCINA AVE

MARGARITA AVE

MURPHY AVE

MARIA AVE

YERRA BUENA AVE

YERRA BUENA AVE

MARGARITA AVE

PINAL AVE

ENCINA AVE

MURPHY AVE

YERRA BUENA AVE

MARIA AVE

PINAL AVE

ENCINA AVE

MARGARITA AVE

MURPHY AVE

MARIA AVE

YERRA BUENA AVE

YERRA BUENA AVE

MARGARITA AVE

PINAL AVE

ENCINA AVE

MURPHY AVE

YERRA BUENA AVE

MARIA AVE

PINAL AVE

ENCINA AVE

MARGARITA AVE

MURPHY AVE

MARIA AVE

YERRA BUENA AVE

YERRA BUENA AVE

MARGARITA AVE

PINAL AVE

ENCINA AVE

MURPHY AVE

YERRA BUENA AVE

MARIA AVE

PINAL AVE

ENCINA AVE

MARGARITA AVE

MURPHY AVE

MARIA AVE

YERRA BUENA AVE

YERRA BUENA AVE

MARGARITA AVE

PINAL AVE

ENCINA AVE

MURPHY AVE

YERRA BUENA AVE

MARIA AVE

PINAL AVE

ENCINA AVE

MARGARITA AVE

MURPHY AVE

MARIA AVE

YERRA BUENA AVE

YERRA BUENA AVE

MARGARITA AVE

PINAL AVE

ENCINA AVE

MURPHY AVE

YERRA BUENA AVE

MARIA AVE

PINAL AVE

ENCINA AVE

MARGARITA AVE

MURPHY AVE

MARIA AVE

YERRA BUENA AVE

YERRA BUENA AVE

MARGARITA AVE

PINAL AVE

ENCINA AVE

MURPHY AVE

YERRA BUENA AVE

MARIA AVE

PINAL AVE

ENCINA AVE

MARGARITA AVE

MURPHY AVE

MARIA AVE

YERRA BUENA AVE

YERRA BUENA AVE

MARGARITA AVE

PINAL AVE

ENCINA AVE

MURPHY AVE

YERRA BUENA AVE

MARIA AVE

PINAL AVE

ENCINA AVE

MARGARITA AVE

MURPHY AVE

MARIA AVE

YERRA BUENA AVE

YERRA BUENA AVE

MARGARITA AVE

PINAL AVE

ENCINA AVE

MURPHY AVE

YERRA BUENA AVE

MARIA AVE

PINAL AVE

ENCINA AVE

MARGARITA AVE

MURPHY AVE

MARIA AVE

YERRA BUENA AVE

YERRA BUENA AVE

MARGARITA AVE

PINAL AVE

ENCINA AVE

MURPHY AVE

YERRA BUENA AVE

MARIA AVE

PINAL AVE

ENCINA AVE

MARGARITA AVE

MURPHY AVE

MARIA AVE

YERRA BUENA AVE

YERRA BUENA AVE

MARGARITA AVE

PINAL AVE

ENCINA AVE

MURPHY AVE

YERRA BUENA AVE

MARIA AVE

PINAL AVE

ENCINA AVE

MARGARITA AVE

MURPHY AVE

MARIA AVE

YERRA BUENA AVE

YERRA BUENA AVE

MARGARITA AVE

PINAL AVE

ENCINA AVE

MURPHY AVE

YERRA BUENA AVE

MARIA AVE

PINAL AVE

ENCINA AVE

MARGARITA AVE

MURPHY AVE

MARIA AVE

YERRA BUENA AVE

YERRA BUENA AVE

MARGARITA AVE

PINAL AVE

ENCINA AVE

MURPHY AVE

YERRA BUENA AVE

MARIA AVE

PINAL AVE

ENCINA AVE

MARGARITA AVE

MURPHY AVE

MARIA AVE

YERRA BUENA AVE

YERRA BUENA AVE

MARGARITA AVE

PINAL AVE

ENCINA AVE

MURPHY AVE

YERRA BUENA AVE

MARIA AVE

PINAL AVE

ENCINA AVE

MARGARITA AVE

MURPHY AVE

MARIA AVE

YERRA BUENA AVE

YERRA BUENA AVE

MARGARITA AVE

PINAL AVE

ENCINA AVE

MURPHY AVE

YERRA BUENA AVE

MARIA AVE

PINAL AVE

ENCINA AVE

MARGARITA AVE

MURPHY AVE

MARIA AVE

YERRA BUENA AVE

YERRA BUENA AVE

MARGARITA AVE

PINAL AVE

ENCINA AVE

MURPHY AVE

YERRA BUENA AVE

MARIA AVE

PINAL AVE

ENCINA AVE

MARGARITA AVE

MURPHY AVE

MARIA AVE

YERRA BUENA AVE

YERRA BUENA AVE

MARGARITA AVE

PINAL AVE

ENCINA AVE

MURPHY AVE

YERRA BUENA AVE

MARIA AVE

PINAL AVE

ENCINA AVE

MARGARITA AVE

MURPHY AVE

MARIA AVE

YERRA BUENA AVE

YERRA BUENA AVE

MARGARITA AVE

PINAL AVE

ENCINA AVE

MURPHY AVE

YERRA BUENA AVE

MARIA AVE

PINAL AVE

ENCINA AVE

MARGARITA AVE

MURPHY AVE

MARIA AVE

YERRA BUENA AVE

YERRA BUENA AVE

MARGARITA AVE

PINAL AVE

ENCINA AVE

MURPHY AVE

YERRA BUENA AVE

MARIA AVE

PINAL AVE

ENCINA AVE

MARGARITA AVE

MURPHY AVE

MARIA AVE

YERRA BUENA AVE

YERRA BUENA AVE

MARGARITA AVE

PINAL AVE

ENCINA AVE

MURPHY AVE

YERRA BUENA AVE

MARIA AVE

PINAL AVE

ENCINA AVE

MARGARITA AVE

MURPHY AVE

MARIA AVE

YERRA BUENA AVE

YERRA BUENA AVE

MARGARITA AVE

PINAL AVE

ENCINA AVE

MURPHY AVE

YERRA BUENA AVE

MARIA AVE

PINAL AVE

ENCINA AVE

MARGARITA AVE

MURPHY AVE

MARIA AVE

YERRA BUENA AVE

YERRA BUENA AVE

MARGARITA AVE

PINAL AVE

ENCINA AVE

MURPHY AVE

YERRA BUENA AVE

MARIA AVE

PINAL AVE

ENCINA AVE

MARGARITA AVE

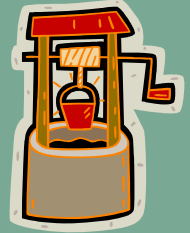
MURPHY AVE

MARIA AVE

YERRA BUENA AVE

The Santa Margarita (CSA 23) Supply Situation

Existing Supply – Groundwater Only



- Two wells - one deep, one shallow
- Main well (shallow) is subject to seasonal fluctuations most notably during a drought
- Back-up well is unable to meet demands on its own
- Community supply does not meet California Code of Regulations Title 22

“(c) Community water systems using only groundwater shall have a minimum of two approved sources before being granted an initial permit. The system shall be capable of meeting maximum day demand with the highest capacity source off line.”

Alternatives for CSA 23's Drought Reliability Program

- No Project
- Water Conservation
- State Water Connection
- Nacimiento Water Connection
- New Well Development

State Water 5 AFY

with exchange agreement

- USDA funded
- Implementation is least costly alternative
- High Quality (No Treatment Required)
- Available now
- Recommended for a Proposition 218 vote by CSA 23 Advisory Group and Public Works Department

- Reliability Concerns

State Water Costs

Option	Purpose	Total Costs	Annual Costs to property owners	Monthly Equiv. cost to property owners
State Water Connection with an Exchange Agreement with other State Water Contractors (5 acre feet per year)	Drought Reliability	\$608,500 (capital) \$ 7,110 (annual)	\$50	Less than \$5
State Water Connection with an Exchange Agreement with other State Water Contractors (85 acre feet per year)	Supplemental Water	\$608,500 (capital) \$120,870 (annual)	\$285	\$24

State Water Contractors

Sub-contractor	Water Service Amount	Drought Buffer	Total Reserved
<u>Chorro Valley Turnout</u>	<u>≈\$1,100 per AF</u>		
City of Morro Bay	1,313	2,290	3,603
CA Mens Colony *	400	400	800
County Operations Center *	425	425	850
Cuesta College	200	200	400
<u>Lopez Turnout/Zone 3 *</u>	<u>≈\$1,000 per AF</u>		
City of Pismo Beach	1,240	1,240	2,480
Oceano CSD	750	0	750
San Miguelito MWC	275	275	550
Avila Beach CSD	100	0	100
Avila Valley MWC	20	60	80
San Luis Coastal USD	7	7	14
<u>Shandon *</u>	100	0	100
TOTAL	4,830	4,897	9,727

CSA 23 Time Line

Public Review of Draft Supplemental EIR & Draft Assessment Engineer's Report	November - January 2011
Certify SEIR for State Water Connection	February 2011
Prop 218 vote or informal community vote for State Water Project Tie-In	March - June 2011
If favorable vote or community support – prepare agreements with banking partners, design and prepare bids	June - December 2011
Construct Tie-in	2012

Questions ??