

**SAN LUIS OBISPO COUNTY FLOOD CONTROL
AND WATER CONSERVATION DISTRICT
WATER RESOURCES ADVISORY COMMITTEE**

San Luis Obispo City Council Chambers

990 Palm Street
San Luis Obispo

Wednesday, January 7, 2009
1:30 p.m.

1. Introductions and Determination of a Quorum
2. Elections
3. Approval of December meeting minutes
4. Public Comment
5. Resource Management System Annual Summary Report
6. Integrated Regional Water Management Program
7. Ongoing Updates:
 - a. Conservation and Open Space Element
 - b. Paso Robles Basin Groundwater Management Plan
 - c. Invasive Mussels
 - d. Rainfall and Reservoir Update
 - e. Membership Updates

8. Future Agenda Items

--- Adjourn by 3:00 pm ---

Next Regular Meeting: **February 4, 2009 1:30 pm**
 San Luis Obispo City/County Library
 995 Palm Street, San Luis Obispo

Visit Water Resources on the Web at: www.slocountywater.org

Purpose of the Committee:

To advise the County Board of Supervisors concerning all policy decisions relating to the water resources of the SLO County Flood Control & Water Conservation District. To recommend to the Board specific water resource programs. To recommend methods of financing water resource programs.

Excerpts from WRAC By-Laws dated March, 6, 2007

SAN LUIS OBISPO COUNTY FLOOD CONTROL
AND WATER CONSERVATION DISTRICT
WATER RESOURCES ADVISORY COMMITTEE
Meeting Minutes
December 3, 2008

Approximately 1:30 pm; Chairperson Winn called the meeting to order.

- 1) Introductions of Members and Attendees – Quorum Established
- 2) Approval of November Meeting Minutes – The November 5, 2008 WRAC meeting minutes were approved upon a first by Member Buel, second by Member Winholtz, and a unanimous vote with one abstention.
- 3) Public Comment – (An audio recording of the meeting and materials submitted during public comment are available under the WRAC link at www.slocountywater.org.) Member Buel informs the WRAC that comments on the draft EIR for the waterline intertie project with Santa Maria may be made until January 9th and that it is available on the NCSO website. Member Greening informs the WRAC of the Board of Supervisors’ tentative approval of Santa Margarita Ranch Ag Cluster and direction to staff to come back on December 16th with findings for approval. Member Winholtz informs of new documentary entitled “Flow” which explores the evolution of water from a resource to a commodity. Alternate member Harvey shares a UC Davis study on the Salinas River and various fish habitat documents for those interested. John Snyder of Nipomo provides an update on Santa Maria groundwater litigation including discussion of various appeals and denials, and an upcoming judgment clarification hearing on December 18th. Member Greening expresses concern over environmental degradation caused by aggregate quarrying for road expansion. Member Bianchi informs the WRAC of Santa Clara Valley’s move to use recycled water and the concern that this will aggravate salinity problems in the area. Chairperson Winn discusses a recent greywater presentation, including implementation challenges associated with compliance with the uniform plumbing code and new buildings versus retrofits.
- 4) Resource Management System Annual Summary Report-Timing and Subcommittee Formation Discussion – James Caruso, County Planning, informs the WRAC that the draft 2008 Resource Management System Annual Summary Report will be available at the January WRAC meeting, with an opportunity for comments to be finalized at the February WRAC meeting before submission to the Board of Supervisors.
- 5) Water resources Section of the Conservation and Open Space Element- Timing and Subcommittee Formation Discussion – James Caruso, County Planning, presents the Conservation and Open Space Element (COSE) production schedule, including its availability in January, and suggests a WRAC subcommittee be formed. Mr. Caruso summarizes that the public draft period will run from December through March and a public Board of Supervisors hearing on the draft will occur after March. Caruso informs that the Paso Robles Basin and Santa Margarita Area Resource Capacity Studies will also be available in the first quarter of the 2009. A WRAC COSE subcommittee is formed, to be chaired by Chairperson Winn, with Agriculture at-

Large Member Allen, San Luis Obispo City Staff Gary Henderson, Morro Bay Member Winholtz, Paso Robles Member Alakel, and Environmental at-Large Member Harvey volunteering to participate.

- 6) Consideration of Forming a Subcommittee to Review Water Policy Implications of the Laetitia Agricultural Cluster Draft EIR – Tim Cleath of Cleath and Associates presents an overview of proposed Laetitia Agricultural Cluster. A discussion ensues over impacts of water supply wells on nearby streams and existing wells, with Mr. Cleath responding. Onsite wastewater treatment, its reuse and storm water issues, as well as the ecology and seasonality of the Los Berros Stream, are discussed. Chairperson Winn discusses differences between this project and the Santa Margarita Ranch agricultural cluster project, including the number of residences and availability of supplemental water. Consensus is reached to form a subcommittee, to be chaired by Member Garfinkel (District 2), with Alternate Member Chipping (Environment at-Large), Mike Murphy (local landowner), and WRAC Chairperson Winn (District 3) volunteering to participate.
- 7) Integrated Regional Water Management (IRWM) Program – Courtney Howard, County Public Works, provides an update on the region acceptance process, including the requirement to justify the boundaries of the region to the State, form a regional water management group (RWMG) and staff’s recommendation that the initial RWMG members be the County, Nipomo CSD and Los Osos CSD by way of Memorandum of Understanding. Ms. Howard describes the \$100M expedited grant funding round for the IRWM Program and limitations on the amount of grant funding each region can request.
- 8) Ongoing Updates
 - a.) Santa Margarita Ag Cluster EIR- A discussion ensues on whether or not an adequate, programmatic EIR certification took place.
 - b.) Invasive Mussels- It is reported that Utah has confirmed mussel infestation despite having preventative measures in place since 1999. Bioremediation as an eradication measure is discussed.
 - c.) District Efforts- Secretary Howard informs that consultant for the Master Water Plan should be retained by January and that development of the Paso Robles Groundwater Basin Management Plan will begin in early January.
- 9) Future Agenda Items-
Brief discussion.

Meeting adjourned approximately 3:30 pm.

WATER RESOURCES ADVISORY COMMITTEE 2008

Organization	Representative		Jan	Feb	Mar	Apr	May	Jun	Jul**	Sep	Oct	Nov	Dec
Cambria CSD	Jim Adams	M			X	X	X	X		X			X
	Robert Reasons	A						X					
	Bob Gresens	Staff	X										
Heritage Ranch CSD	John D'Ornellas	M	X			X				X			X
	Debbie Fransen	A											
Los Osos CSD	John Schempf	M	X			X		X	X		X	X	X
	Steve Senet	A	X	X		X	X						
	George Milanes	Staff	X							X			
	Margret Falkner	Staff											
Nipomo CSD	Bruce Buel	M	X	X	*	X	X	X	X	X	X	X	X
	Ed Eby	A	X	X	X		X		X	X	X	X	X
Oceano CSD	Patrick O'Reilly	M	X						X				X
	Phil Davis	A											
Templeton CSD	Paul Sorensen	M					X	X		X		X	X
	Laurie Ion	A											
San Simeon CSD	John Russell	M									X	X	X
	Charles Grace	A											
City of Arroyo Grande	Chuck Fellows	M		X	*	X	X			X	X	X	X
	Jim Guthrie	A											
City of Atascadero	Steve Kahn	M											
	David Athey	A											
City of Grover Beach	Chuck Ashton	M		X	X	X	X	X	X	X			
	Bill Nicolls	A											
City of Morro Bay	Betty Winholtz	M	X	X	X	X	X	X		X	X	X	X
	Dylan Wade	A						X		X			
City of Paso Robles	Christopher Alakel	M			*		X						X
	Doug Monn	A											
	Iris Prieststaff	Staff			X								
City of Pismo Beach	Kris Vardas	M											
	Dennis Delzeit	A	X	X		X	X	X					
	Les Evans	NA								X	X		
City of San Luis Obispo	Christine Mulholland	M	X	X	X	X	X	X	X	X	X	X	
	Alan Settle	A											
	Ron Munds	Staff											
	Gary Henderson	Staff	X	X	X	X		X	X	X	X	X	X
District 1	Steve Sinton	M	X	X	X	X	X	X		X	X		
District 2	Bill Garfinkel	M	X	X	X	X	X	X	X	*	*	X	
District 3	Marilee Hyman	M	X	X	X	X	X	X	X	X	X	X	
District 4	Michael Winn	M	X	X	*	X	X	X	X	X	X	X	
District 5	Dan O'Grady	M	X	X	X	X	X	*	X	*	X	X	X
Ca Mens Colony	John Kellerman	M	X	X	X	X		X		X	X		X
	Gerald Elwood	A											
Camp SLO	John Reid	M			X	*		X		X	X	X	
	Nicole Balliet	A				*							
Cuesta College	Edralin Maduli	M											
	Terry Reece	A			X								
Atascadero Mutual	John Neil	M				X						X	
	Jaime Lien	A			X			X	X	X	X		
Golden State Water	Mark Zimmer	M			X		X	X				X	X
	Dan Dorlack	A											
Agriculture at Large	Ray Allen	M	X	X	X	X				X			X
	Mike Broadhurst	A	X		X	*	X	X		*	X	X	X
County Farm Bureau	Joy Fitzhugh	M	X	X	X	X	X	*		X	*		X
	Jackie Crabb	A						X	X	X			
Environmental at Large	Sue Luft	M	X	X	X	X	X	X	X	X	X	X	X
	Eric Greening	M	X	X	X	X	X	X	X	X	X	X	X
	David Chipping	A	X	X	X	X		X	X	X	X	X	X
	Sue Harvey	A			X				X	X	X	X	X
Coastal San Luis RCD	Linda Chipping	M	X	X	X	X		X	X	X	X	X	X
	Kathie Matsuyama	A											
Upper Salinas RCD	Tom Mora	M											
	Bill Bianchi	A	X	X	X	X	X	X	X	X		X	X
	Gidi Pullen	Staff					X						
Public Works Staff	Courtney Howard	Staff	X	X	X	X		X		X	X	X	
	Paavo Ogren	Staff		X			X						
	Dean Benedix	Staff			X	X	X	X	X	X	X	X	X
	Sylas Cranor	Staff	X	X	X	X		X	X	X	X	X	X
	Glen Priddy	Staff					X						
	Mark Hutchinson	Staff					X	X					
	John Hollenbeck	Staff								X	X		
Planning Staff	James Caruso	Staff			X		X			X			
	Martha Miller	Staff			X								
Parks Staff	Don Melin	Staff					X						
Env. Health Staff	Laurie Salo	Staff											
	Leslie Terry	Staff	X		X	X	X	X	X	X			X
	Megan Lillich	Staff	X		X	X		X		X	X		X
Ag. Com. Staff	Michael Isensee	Staff	X	X	X	X		X		X	X	X	

M= Member; A= Alternate; NM=New Member NA= New Alternate 0 = No nomination received as of 8/11/08

*To be confirmed at a future BOS meeting

**Special Meeting

* = Notified of Absence/Conflict

WATER RESOURCES ADVISORY COMMITTEE
GUEST LIST

2008

NAME	AFFILIATION (if any)	JAN	FEB	MAR	APR	MAY	JUN	JUL	SEP	OCT	NOV	DEC
Maria Lorca		X										
John Snyder		X	X	X		X	X		X	X		X
Marti Johnson	Planning&Cons League	X							X			
G&G Taylor		X	X	X	X	X	X	X		X	X	X
Dawn Williams	League of Women Voters	X	X		X	X	X	X	X		X	
Alan Volbrecht	CSA 23 - Santa Margarita	X	X	X	X	X	X	X		X		
David Blakely			X	X								
Shawn Roberts	Fugro		X									
George Sullivan	Public Interest			X								
John Marshall	CMC			X								
Mike Seibert	CMC			X								
Miranda Joseph	Public Interest			X								
Marla Jo Bruton					X							
Richard Sadowski					X							
Al Barrow	CASE				X							
Richard Wimmer	Public Works Dept				X							
Patrick Sparks	AES, Inc.				X							
Doug DeBord	AES, Inc.				X							
Tom Murphy	AES, Inc.				X							
Otto Schmidt					X							
Lisa Schicker	Los Osos CSD				X							
Dennis Gibbs	Santa Barbara FC&WCD				X							
Malcolm McEwen	Boyle Engineering					X		X				
Mary Michael	Pismo Beach Resident					X						
Mary Bianchi	UC Coop Ext					X	X					X
Doug Filipponi	Santa Margarita Ranch							X		X		
Steve Cole									X			
Monica Hunter	Planning and Cons. League								X			
Maria Kelly	Los Osos				X					X		
Dean Thomas	RWQCB									X		
Denny Brewer	EH											X
Tim Cleath	Cleath and Associates											X
Patrick Vowell	GSWC											X

TO: Water Resource Advisory Committee
FROM: James Caruso, SLO County Planning
DATE: January 7, 2009
SUBJECT: Agenda Item #5: Resource Management System Annual Summary Report

Recommendation

Review the Annual Summary Report of the Resource Management System and approve formal comments to the Board of Supervisors during the February WRAC meeting.

Discussion

The Annual Summary Report (ASR) of the Resource Management System (RMS) will be distributed to WRAC members and will be available to the general public on Monday, January 2, 2009. The WRAC will have January and February meetings to discuss the ASR's content, format and analysis and to make recommendations to the Board. The Board of Supervisors will consider the ASR and the WRAC recommendations later in February 2009.

ASR format changes were started last year. The 2007 ASR was published in a color booklet format that focused on problems and issues. The services that did not have a recommended level of severity were summarized in the appendix. Continued changes have been made to the 2008 report. The ASR is organized by sub-region (South County, North County Inland and North Coast) and by communities within each sub-region. Each incorporated city and unincorporated community has its own section that includes all the services tracked by the RMS: water, sewer, roads, schools and air quality. The more regional services such as schools and air quality are found at the end of the sub-regional section.

The population forecast portion of the report has been expanded. Each city and community has population data and a population forecast from the years 2000 to 2020.

TO: Water Resource Advisory Committee

FROM: Courtney Howard, SLO County Water Resources Engineer

DATE: January 7, 2009

SUBJECT: Agenda Item #6: Integrated Regional Water Management Program

Attached are the draft Region Acceptance Process (RAP) Guidelines for the Integrated Regional Water Management (IRWM) Program. The District is in the process of developing recommendations for structuring our IRWM region's governance, which requires the formation of a Regional Water Management Group, and a draft Memorandum of Understanding in order to meet the RAP Guidelines. The District will circulate recommendations and a draft MOU in January for WRAC consideration and action at its February meeting.

REGION ACCEPTANCE PROCESS

A COMPONENT OF THE INTEGRATED REGIONAL WATER MANAGEMENT PROGRAM GUIDELINES

Purpose

This document is a component of the Integrated Regional Water Management (IRWM) Program Guidelines. It presents the California Department of Water Resources' (DWR) Region Acceptance Process (RAP) that will be used to evaluate and accept an IRWM region into the IRWM grant program, California Water Code (CWC) §10541(f) (effective March 1, 2009). Acceptance and approval of the composition of an IRWM region into the IRWM grant program will be required before any region can submit an application for IRWM grant funds. DWR has not previously reviewed and accepted any region, therefore, this process applies to all IRWM regions, both existing and developing. DWR will conduct the RAP on, at least, an annual basis. Timing of the annual RAP review may be coordinated with any upcoming grant solicitation cycle. This opportunity will be given again to those regions that could not apply or were not approved the first time.

Background

Since the inception of the IRWM grant program, DWR has encouraged and supported the formation of self-determined IRWM regions. However, effective guidance in IRWM region development has been challenging, because there is no single physical size, organizational structure, or governance definition that applies uniformly to all areas in the state. IRWM regions are dynamic and evolving and as IRWM regions change, it is important that those changes be understood at local and state levels and that the changes work toward the goals of better regional management.

In September 2008, SB 1 (Perata, Stats. 2008, Ch. 1; eff. March 1, 2009) was signed by Governor Schwarzenegger. SB1 contains the "Integrated Regional Water Management Planning Act", CWC §10530 *et seq.* The IRWM Planning Act provides a general definition of an IRWM plan as well as guidance to DWR as to what IRWM program guidelines must contain. CWC §10541(f) states that the guidelines shall include standards for identifying a region for the purposes of developing or modifying an IRWM plan. This section also directs DWR to develop a process to approve the composition of the region for the purposes of Proposition 84 IRWM Program. At a minimum, a region is defined as a contiguous geographic area encompassing the service areas of multiple local agencies; is defined to maximize the opportunities to integrate water management activities; and effectively integrates water management programs and projects within a hydrologic region defined in the California Water Plan, the Regional Water Quality Control Board (RWQCB) region, or subdivision or other region specifically identified by DWR (Public Resource Code §75026.(b)(1)).

Equally important to the region boundary is how the IRWM region develops and implements its governance structure and stakeholder involvement functions. A Regional Water Management Group (RWMG) is a group of three or more local agencies, at least two of which have statutory authority over water supply or management, as well as those other persons necessary for the development and implementation of a plan (CWC §10539). This definition acknowledges multiple perspectives on water management and requires collaborative involvement of multiple

stakeholders. The governance structure must outline the roles and responsibilities of the governing body, including how decisions are made within the region. DWR will not mandate a specific governance structure; however, certain general governance structure and processes must be addressed. Through the RAP, DWR seeks to meet with the RWMGs to:

1. Understand the challenges the RWMGs face in defining regions and their functions;
2. Provide the state's perspective on their specific region;
3. Give clear direction on to developing regional efforts on IRWM region boundaries;
4. Establish a mechanism for the RWMG and state to communicate as the region evolves; and
5. Comply with CWC §10541(f).

IRWM Region Description

An IRWM region is not based solely on geographic considerations or characteristics. It is also defined by water management issues, its stakeholders, and water-related conflicts. An IRWM region must be designed or configured to diversify and strengthen the regional water management portfolio.

While there is no quantitative definition of a region (such as a certain number of acres), it is possible to define the region too narrowly in terms of geography, participants, water resources, water management strategies, and water management objectives. A narrowly defined region would limit opportunities to integrate water management strategies or diversify a region's water management portfolio.

The IRWM region must consider the broad variety of the water systems being managed in the planning area, including:

- Water supply;
- Water quality;
- Environmental stewardship;
- Flood management;
- Drought preparedness;
- Wastewater treatment;
- Watershed management;
- Recycled water;
- Groundwater management;
- Land use;
- Natural habitat and conservation;
- Conjunctive use; and
- Emphasis on reduced dependence on imported water.

IRWM Region Characteristics

Functional, successful regions will typically be composed of numerous, diverse stakeholders that manage, direct, or are involved in processes that influence regional water management.

Desirable Characteristics of an IRWM Region

The following is a listing of some of the desirable characteristics of an IRWM Region that DWR will continue to encourage.

- The IRWM region is the largest defined contiguous geographic area encompassing the service areas of multiple local agencies, and it is defined to maximize opportunities to integrate water management activities related to natural and man-made water system(s), including water supply reliability, water quality, environmental stewardship; and flood management.
- The IRWM region is inclusive and utilizes a collaborative, multi-stakeholder process that provides mechanisms to assist disadvantaged communities (DAC); address water management issues; and develop integrated, multi-benefit, regional solutions that incorporate environmental stewardship to implement the IRWM plan.
- The IRWM region encompasses a water system containing natural and man-made components with diverse water management issues that are included in a single collaborative water management portfolio, prioritized on regional goals and objectives.
- The IRWM region should demonstrate a reasonable and effective governance structure for developing and implementing its IRWM plan.

Undesirable Characteristics of an IRWM Region

The following is a summary of some of the undesirable characteristics of an IRWM Region that DWR does not encourage.

- Multiple IRWM regions in the same geographic area all planning to manage the same water system.
- A region that is solely defined by a jurisdictional boundary, county line, or other geopolitical boundary, without consideration of watershed boundaries or physical location of water resources and infrastructure.
- A region that is formed for the sole purpose of seeking short-term grant funds rather than to sustain a long-term regional planning effort to ensure water supply reliability, water quality, environmental stewardship, and flood management.
- A region that is project driven where existing projects are the primary focus and collaborative integrated regional planning and management is secondary.
- A region where the boundaries tend to exclude rather than include other water management entities and stakeholders.

Who Should Submit?

Any RWMG should submit RAP materials if it anticipates applying for grant funding from DWR's IRWM grant program which includes funding from Proposition 84 IRWM funds, Proposition 1E stormwater flood management funds, or other IRWM funds that may be available in the future. The requested information should be submitted by a local agency or non-profit organization.

What to Submit

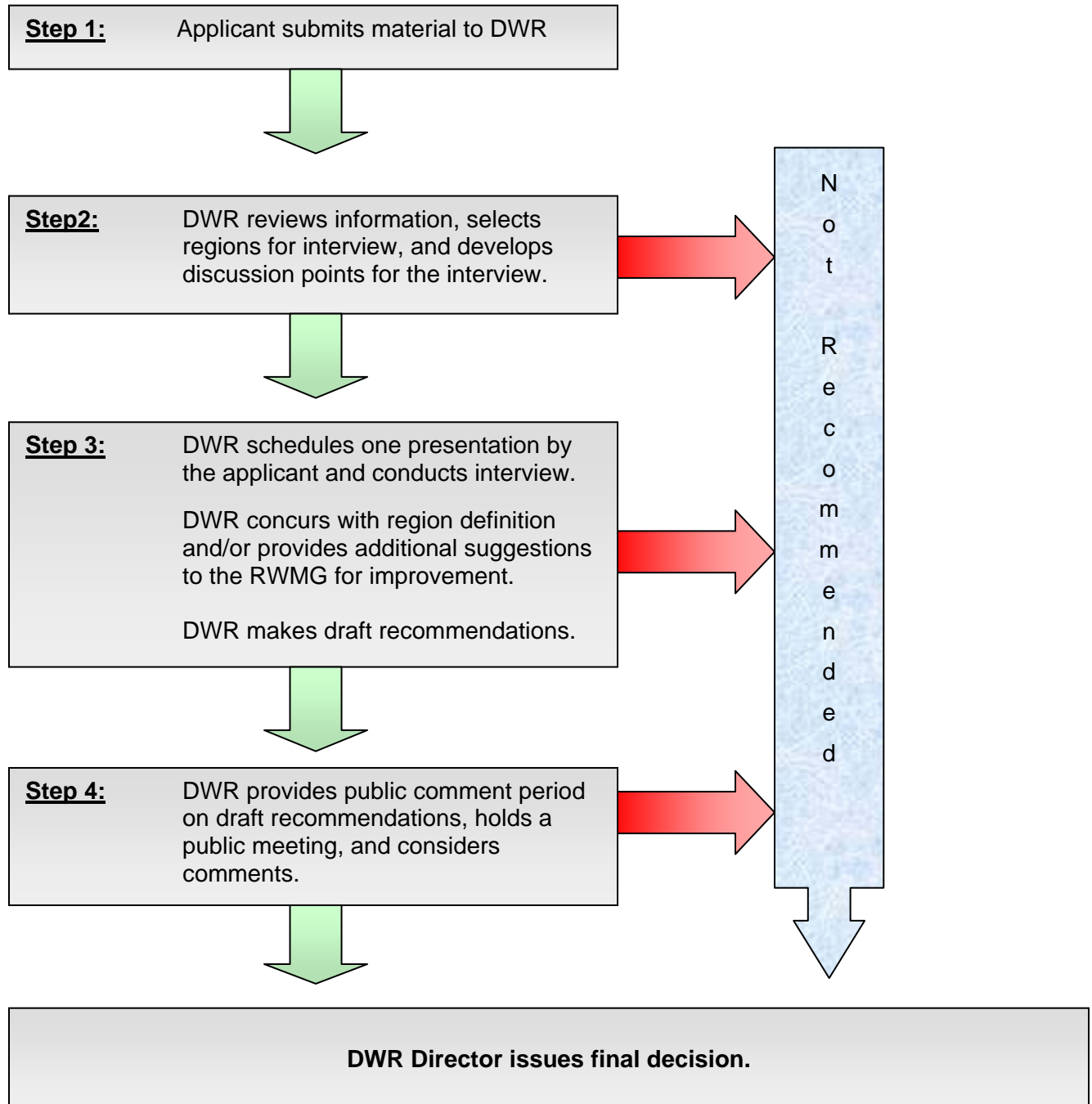
The RWMG shall submit RAP materials in the form of written text, maps, figures, and tables that thoroughly demonstrate that the IRWM region is the most comprehensive, contiguous area defined by common water management issues related to the water system(s) both natural and man-made, including water supply, water quality, environmental stewardship, and flood management.

DWR understands that some regions may be in the initial developmental process and other regions may have more fully developed IRWM planning efforts. A developing IRWM region and an established region may have differing abilities to provide information about their IRWM region. In these cases, the developing region may only be able to provide a conceptual discussion and limited supporting information regarding the composition of the IRWM region. The RAP materials must provide the information necessary to justify and support the proposed region boundary. Use of pre-existing documents is encouraged and the RWMG may extract the relevant information into the RAP materials. The RAP materials should be a stand-alone document that thoroughly supports the basis for the proposed region boundary.

Table 1 lists and describes the items RWMG must submit for the RAP. Corresponding reviewer information is also provided to clarify how the submittal material will be evaluated. See Table 1.

IRWM RAP Review Steps

The following flow diagram provides an overview of the RWMG submittal and acceptance process:



Step 1 – Submission of RAP material

RWMG submits materials to DWR, as described in “What to Submit” Section.

Step 2 – DWR reviews RAP material

DWR will review the RAP material and make one of the following determinations:

1. **Application Not Recommended.** The information presented does not meet basic eligibility requirements to reasonably support the concepts and basis for the proposed IRWM Region Boundary. The agencies in this category will not be invited to the region acceptance process interview.
2. **Application Recommended.** DWR will notify the applicant and schedule an initial applicant interview with the RWMG. DWR will prepare a list of questions or discussion points regarding the questionnaire responses. An email with the questions/discussion points will be sent to the point-of-contact listed in Question 1. DWR may request minor revisions or clarification or submittal of additional material for the RAP interview (discussed in Step 3). The email will also provide the time and location of the interview.

Step 3 – Interviews

The RWMG will have an opportunity to discuss the RAP material with DWR representatives during a scheduled interview period. DWR will have an opportunity to ask questions and seek clarification. The purpose of the interview is to provide DWR with answers to questions raised during the review process. Representatives of the State Water Resources Control Board, the appropriate Regional Water Quality Control Board, or other interested state agencies may participate in the interviews. The applicant will be allowed a limited number of representatives to participate in the RAP interview.

At the end of Step 3, draft recommendations for the RWMGs that submitted RAP materials will be posted on the DWR website (list below, in “IRWM Grant Program Website”) and a news release and email announcement will be issued.

Step 4 – Public comment period

Before making a final decision, DWR will provide a public comment period, which includes a public meeting to consider public comments. Based on the public comments received and consultation with reviewers, DWR will make one of the following recommendations to the DWR Director:

1. **Region Not Accepted.** The information provided in the RAP materials and the interview does not reasonably support the concepts and basis for the IRWM region boundary;
2. **Region Accepted.** The information provided in the RAP materials and the interview reasonably support the IRWM region boundary.
3. **Region Conditionally Accepted.** In some regions where information on the exact region boundaries may not be complete, it may be necessary for the RWMG to

coordinate with stakeholders on the conceptual vision for the region boundary. In these cases, DWR may issue a conditional region approval to allow the applicant an opportunity to coordinate with stakeholders in an effort to finalize the region boundaries and submit to DWR for review and approval. In this case, the applicant would re-enter the process at Step 3. Due to the RAP schedule, the RWGM may need to wait until the next cycle of the RAP review to be able to submit an application for IRWM grant funding.

4. **Other Action.** DWR make may other recommendations as necessary to address specific concerns with an individual IRWM region or a group of IRWM regions.

Following consideration of public comments, the Director of DWR will issue the final RAP decisions which will be announced in a news release; posted on the IRWM website, along with an updated map of IRWM regions; and emailed to the IRWM distribution list.

Timeline

The estimated schedule for the 2009 Expedited RAP is presented below:

Issue draft RAP guidelines and provide 30-Day public comment period	Dec 22, 2008
RAP Public Meeting: Northern and Southern California	<i>January 2009¹⁾</i>
Consider public comment and issue final RAP guidelines	<i>January 2009</i>
RWGM's prepare RAP materials (approximately 30 days)	<i>Jan – Feb 2009</i>
RAP materials due	<i>February 2009</i>
DWR meetings and interviews with RWMGs (approximately 14 days)	<i>March 2009</i>
Release draft RAP recommendations	<i>April 2009</i>
Public comment period on draft RAP recommendations (at least 15 days)	<i>April 2009</i>
DWR's final RAP decisions	<i>April 2009</i>

1) *Italics* denote tentative dates.

When and How to Submit

Applications are due on <date> at 5:00PM Pacific Time. Submit three (3) hardcopies and five (5) electronic copies in MS Word on five (5) CDs of the material listed in Table 1. In addition, if necessary provide the map(s) on a separate CD with UTM Zone 10, NAD 27 format. All of the RAP materials above must be sent or delivered to one of the following addresses:

Mailing Address

State of California
Department of Water Resources
Division of Planning and Local Assistance
Attn. Ralph Svetich
Post Office Box 942836
Sacramento, California 94236-0001

Courier Address

State of California
Department of Water Resources
Division of Planning and Local Assistance
Attn. Ralph Svetich
901 P St.
Sacramento, California 95814

Mailing List

In addition to the website referenced below, DWR will distribute information via e-mail. If you are not already on the IRWM contact list and wish to be placed on it, please e-mail your contact information to: DWR_IRWM@water.ca.gov

IRWM Grant Program Websites

DWR will use the Internet to notify interested parties of the status of this proposal process and to convey pertinent information. Information will be posted at the following website:
<http://www.grantsloans.water.ca.gov/grants/integregio.cfm>

Point of Contact

For questions about the Guidelines, please contact Norman Shopay at (916) 651-9218, nshopay@water.ca.gov.

Review Guidance

The review of RAP materials will be primarily based on information provided in the submittal and the interview. However, the reviewers' knowledge of the IRWM region and the funding area will be critical in determining if regions meet the desired characteristics of an IRWM region. If specific information is not presented in the RAP materials, the review team should identify needed additional materials for the RAP interview. Table 1, below, provides guidance and direction to the review team on how and what to consider during the RAP review effort.

Eligibility

As part of the RAP review, DWR will determine if the RWMG meets basic fundamental eligibility requirements. DWR will review whether the RWMG composed of three or more local agencies, at least two of which have statutory authority over water supply or management, as well as those other persons necessary for the development and implementation of a plan.

Table 1 – Submittal Materials and Reviewer Information

NO.	WHAT TO SUBMIT	REVIEWER INFORMATION
1	Information on the submitting entity including why the RWMG has selected the entity to submit the RAP materials. Include contact information (name, address, phone, fax, and email) of the person whom DWR should coordinate.	Ensure that contact information was provided. Is it clear that the submitting agency has been given permission to submit on behalf of the RWMG.
2	<p>A description of the composition of the RWMG. Identify RWMG members, including their role in the RWMG process, regional water management responsibilities, and the level of IRWM participation. For each entity, state if they have adopted plan to adopt, or will not adopt the IRWM plan.</p> <p>Provide a listing of the local agencies with statutory authority over water supply or water management, and the basis and nature of that statutory authority. For the purposes of this document “statutory authority over water supply or water management” may include, but is not limited to, water supply, water quality management, wastewater treatment, flood management/control, or storm water management.</p> <p>Provide a listing of the other participants such as agencies, stakeholders, and others included in the RWMG and their role in developing and implementing the IRWM Plan.</p> <p>List and describe the working relationship of identified agencies and stakeholders per CWC §10541.(g), which may include:</p> <ul style="list-style-type: none"> • Wholesale and retail water purveyors; including a local agency, mutual water company, or a water corporation as defined by Section 241 of the Public Utilities Code; • Wastewater agencies; • Flood management agencies; • Municipal and county governments and special districts; • Electrical corporation, as defined in Section 218 of the Public Utilities Code; • Native American Tribes that have lands within the region; • Land use authorities; • Watermaster for adjudicated surface water or groundwater basins; • Self-supplied water users, including agricultural, industrial, residential and park districts, school districts, colleges and universities, and others; • Environmental stewardship organizations including watershed groups, fishing groups, land conservancies, and environmental groups; • Community organizations, including land owner organizations, taxpayer groups, and recreational interests; • Industry organizations representing agriculture, developers, and other industries appropriate to the region; • State, federal, and regional agencies or universities that have specific responsibilities or knowledge within the region; • Members and representatives of disadvantaged communities, including environmental justice organizations, neighborhood councils, and social justice organizations; and • Any other interested groups appropriate to the region. <p>Descriptions of working relationship may include but is not limited to information regarding the sharing of information, shared infrastructure, or competing interests.</p>	<p>Does the submittal list and discuss the role of the RWMG members and water management stakeholders that have agreed to participate in this process? Have the necessary RWMG members indicated they have or will adopt the completed IRWM plan?</p> <p>Do the RWMG members identified represent the majority of the water management authorities and stakeholders within the region boundary? Are there any entities known to have an interest in the area that have not been listed? Do you understand for each member whether they have statutory authority over water management, their participation in IRWM planning and implementation, and their local and regional interests in water management and planning?</p> <p>Do the members and groups appear to have good working relationships? Do they exchange information on water management issues? Do they share any facilities or infrastructure? Are there any competing interests or conflicting policies among the members that may affect integrated water planning and management?</p>

*Draft IRWM Regional Acceptance Process Guidelines
For 30-Day Public Comment Starting December 22, 2008*

3	<p>A description of how stakeholders, including DACs, are identified and invited to participate. List the procedures, processes, or structures that promote access to and collaboration with people or agencies with diverse views within the region. Discuss how the outreach efforts address the diversity of water management issues, geographical representation, and stakeholder interests in the region.</p> <p>Explain how the IRWM region is inclusive and utilizes a collaborative, multi-stakeholder process that provides mechanisms to assist DAC; address water management issues; and develop integrated, multi-benefit, regional solutions that incorporate environmental stewardship to implement future IRWM plans.</p>	<p>Does the list of stakeholders appear to be inclusive? Are DACs given an opportunity to participate? Does it appear that the RWMG includes stakeholders, including DACs, in its planning process and implementation?</p> <p>Do stakeholder outreach efforts promote participation of broad-based water planning and management interests in the region? Do the listed stakeholders provide a balanced representation of the water issues in the region?</p> <p>Does the submittal describe how stakeholders, including DACs, are identified and invited to participate? Are the procedures, processes, or structures that promote access to and collaboration with people or agencies with diverse views within the region listed and discussed?</p> <p>Does it appear that the IRWM region is inclusive and utilizes a collaborative, multi-stakeholder process that provides mechanisms to assist DAC and address water management issues? Will this result in the development of integrated, multi-benefit, regional solutions that incorporate environmental stewardship to implement the IRWM plan?</p>
4	<p>A description of the process being used that makes the public both part of and aware of the regional management and IRWM efforts. Discuss ways for the public to gain access to the RWMG and IRWM process for information and provide input.</p>	<p>Does the RWMG allow the public to participate in regular meetings? Is there an established method of posting meeting agendas, notices, and minutes? Are they posted with sufficient lead time for the public to participate in meetings?</p> <p>Is it clear who the public should contact within the RWMG if they have questions regarding regional water management efforts or IRWM planning and implementation in the region? Are there public meetings held to solicit public comments ahead of major decisions to be made by the RWMG? What is the process for the public to provide input to RWMG on regional water management and/or IRWMP? And what is the process being used by the RWMG to evaluate and respond to that input?</p>
5	<p>A description of the RWMG governance structure and how it will facilitate the sustained development of regional water management and the IRWM process, both now and beyond the state grant IRWM funding programs.</p> <p>Discuss how decisions are made. Identify the steps in which RWMG arrives at decisions and how RWMG members participate in the decision-making process. Examples of RWMG decisions to consider in discussion:</p> <ul style="list-style-type: none"> • Establishing IRWM plan goals and objectives • Prioritizing projects • Financing RWMG and IRWMP activities • Implementing plan activities • Making future revisions to the IRWM plan • Hiring & managing consultants <p>Describe how the RWMG will incorporate new members into the governance structure. Explain the manner in which a balance of interested persons or entities representing different sectors and interests have been or will be engaged in the process, regardless of their ability to contribute financially to the plan.</p> <p>Describe how the governance structure facilitates development of a single collaborative water management portfolio, prioritized on the regional goals and objectives of the IRWM region.</p>	<p>Are the roles and responsibilities of the RWMG clearly supportive of regional planning?</p> <p>Does the RWMG operate in a collaborative manner? Is it clear how decisions are made, including establishing plan goals and objectives, prioritizing projects, financing RWMG activities, implementing plan activities, and making future revisions to the IRWM plan?</p> <p>Who participates in the decision making process? Are all of the RWMG members involved or are there designated committees? Does the governance structure allow only certain members to vote on decisions? Does the decision making process allow for the participation of stakeholders and smaller entities? Do members have to contribute financially to the RWMG to be allowed to vote?</p> <p>Can the RWMG governance structure facilitate the sustained development of the IRWM region now and beyond the current IRWM funding programs? Does the group require members to contribute to the group's expenses, and if not, how will the group identify a budget for its operations, such as plan updates.</p> <p>Will the governance structure facilitates development of a single collaborative water management portfolio, prioritized on the regional goals and objectives of the IRWM region?</p>

6	<p>Present the IRWM regional boundary. Indicate in the submittal which boundaries are included and if/how they affect the determination of the region boundary:</p> <ul style="list-style-type: none"> • Political/jurisdictional boundaries; • Water, conservation, irrigation, and flood district boundaries; • Watershed management areas; • Groundwater basins as defined in DWR Bulletin 118, Update 2003 – California’s Groundwater; • RWQCB boundaries • Floodplain maps (i.e. FEMA/Corps of Engineers); • Physical, topographical, geographical and biological features; • Surface water bodies; • Major water related infrastructure; • Impaired water bodies; • Population; • Biological significant units or other biological features (critical habitat areas); and • Disadvantaged communities with median household income demographics <p>Explain how the IRWM region encompasses the service areas of multiple local agencies and will maximize opportunities to integrate water management activities related to natural and man-made water systems, including water supply reliability, water quality, environmental stewardship, and flood management.</p> <p>On a CD, provide map(s) that present the regional boundaries in UTM Zone 10, NAD 27 format, including the above information, if applicable.</p>	<p>Does it appear that the IRWM region boundary was based solely on political boundaries?</p> <p>Is it clear what is the basis and rationale for the IRWM region boundary? Does it make sense for long term water management?</p> <p>Does the IRWM region boundary consider multiple water management boundaries such as watershed and groundwater basins?</p> <p>Does the region boundary appear appropriate given the context of the region’s unique water management issues?</p> <p>Does the IRWM region encompass the service areas of multiple local agencies? Does it appear that the IRWM region is structured to maximize opportunities to integrate water management activities related to natural and man-made water systems, including water supply reliability, water quality, environmental stewardship, and flood management?</p>
7	<p>A description of the history of IRWM efforts in the region. Describe how the region boundary relates to the current water resources and historic water management issues in the region?</p> <p>A description of the regional water management issues, and conflicts in the region. Issues and conflicts may relate to water supply, water quality, flood management, environmental stewardship, imported water, waste water, conjunctive use, etc. Also describe efforts to develop multi-benefit integrated programs and projects that meet regional priorities.</p> <p>A description of the water related components of the region. The submittal must consider two different types of components, the physical components and the groups that manage or have input to those components. Physical components of a water system include natural and man made infrastructure. Some of the components we expect to see include are watersheds, surface water impoundments, ground water basins, water collection systems, distribution systems, wastewater systems, flood water systems, and recharge facilities. The submittal should explain how water arrives in the region, how it is used, and how it is handled after it is used.</p>	<p>Is it clear how the history of water management in the region affects the boundaries that exist in the region and how it shapes the water management issues facing the region today?</p> <p>How has water conflict been resolved in the region? Have there been established water management groups that collaborated to resolve these differences? Is the RWMG associated with these groups?</p> <p>Does the submittal provide a comprehensive understanding of the water resources available to the region and provide context to the region’s water management challenges today and into the future?</p> <p>Does it appear that multi-benefit, integrated, programs and projects will be developed to meet regional priorities?</p> <p>Are the extent and conditions of the water infrastructure in the region well understood? Is it clear where the critical components of the water system reside and the parties responsible to manage and maintain them historically? When were they put into service and are there capital improvement plans to repair or replace them in the near future?</p> <p>Does the described system omit any obvious water-related components such as watersheds, surface water impoundments, ground water basins, water collection systems, distribution systems wastewater systems, flood water systems, or recharge facilities?</p>

8	<p>A description of the IRWM region's relationship and coordination with adjacent existing or developing IRWM regions.</p> <p>Identify any overlapping areas and explain the basis for the overlap. Discuss whether there is a clear relationship and acknowledgement by both regions that the overlap is acceptable.</p> <p>Explain whether the regional boundary will leave any uncovered or void areas immediately outside or within the boundary.</p> <p>Describe any areas within the region that are excluded or create a void area and explain why this is reasonable and appropriate.</p> <p>Are there distinct water management differences between adjacent or overlapping IRWM regions and the proposed IRWM region to support being separate IRWM regions?</p>	<p>It is important to note that not only do the region boundaries need to make sense from hydrological, water system, and water issue perspectives; but we also need to consider a broader view of how all the IRWM boundaries fit together to achieve benefits statewide. Consider the shape of the IRWM; and how it relates to other regions nearby.</p> <p>Determine if the RWMG has successfully managed overlaps or gaps within and outside of the region boundary. If there are overlapping IRWM regions, is there a clearly defined relationship between the IRWM planning regions? Are there indications the overlapping regions have discussed their water management issues and coordinated on activities occurring in overlapping areas?</p> <p>Is there sound reasoning for having more than one RWMG planning water management issues for the same area? Are there distinct water management differences between adjacent or overlapping IRWM regions and the proposed IRWM region to support being separate IRWM regions?</p> <p>Does the submittal describe any areas within the region that are excluded or create a void area and explain why this is reasonable and appropriate? Has the boundary been drawn so that the region leaves uncovered or void areas within the region or immediately outside the boundary? Will the region boundary create a planning gap in the region? Are there overlaps, gaps, or holes in the region coverage that do not seem to make sense?</p>
---	--	---

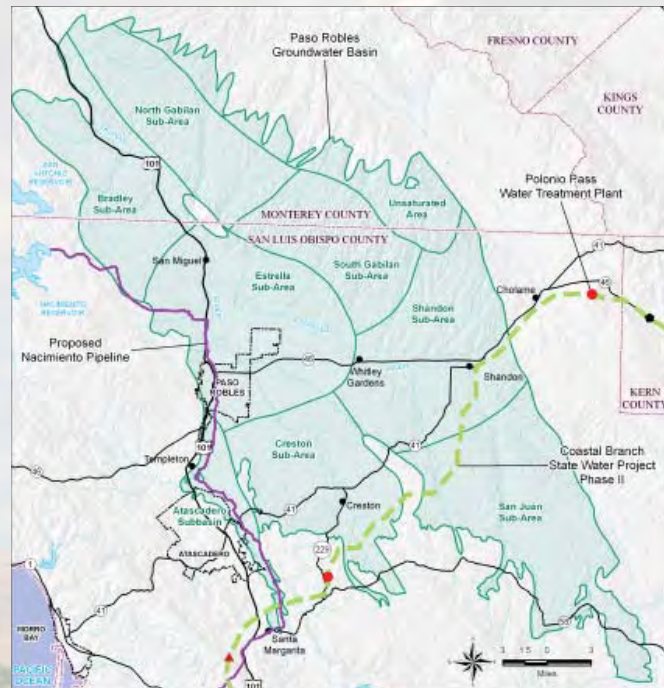


Introducing

The Paso Robles Groundwater Basin Management Plan



San Luis Obispo County recently completed an Integrated Regional Water Management Plan. The plan contains groundwater monitoring and management objectives for the groundwater basins in the County, including the Paso Robles Groundwater Basin. In response to these objectives, The City of Paso Robles and San Luis Obispo County are leading the preparation of a groundwater management plan (GMP) for the Paso Robles Groundwater Basin. The GMP will address groundwater conditions, identify local and basin-wide groundwater issues, and outline measures to protect groundwater resources within the plan area (shown at right).



A Project Kickoff Meeting will be held:

Thursday, January 15, 2009
5 p.m. — 7 p.m
City of Paso Robles
Emergency Operations Center
900 Park Street

The meeting will include a review of the project purpose, approach, and schedule. Additionally, the formation of the Groundwater Advisory Committee will be discussed. The purpose of the Groundwater Advisory Committee is to assist in developing the GMP. The draft GMP is scheduled to be released in July 2009, with the final GMP due December 2009.

Parties interested in the GMP are encouraged to participate in the planning process by attending public meetings scheduled by the Groundwater Advisory Committee.



TO: Water Resource Advisory Committee
FROM: Courtney Howard, SLO County Water Resources Engineer
DATE: January 7, 2009
SUBJECT: Agenda Item #7.c: Invasive Mussel Species

**San Luis Obispo County Regional Invasive Mussel Monitoring Program
 Monthly Summary Report for December 2008**

Monitoring Site Inspections

Reservoir	Agency	No. of sites	Were all sites inspected?	Any confirmed positives?
Lopez Lake	CDFG	1	*	---
Lopez Lake	SLO Co. PWD	3	Yes	No
Lopez Terminal	SLO Co. PWD	1	Yes	No
Salinas	CDFG	1	*	---
Salinas	SLO Co. PWD	2	Yes	No
Cayucos	Whale Rock Reservoir	1	Yes	No
Nacimiento	CDFG/Mo. Co. Parks	1	No ⁽¹⁾	---
Nacimiento	SLO Co. PWD/OSCA	1	Yes	No
Nacimiento	HRCSD/SLO Co. PWD	1	No ⁽²⁾	---
Nacimiento	Mo. Co. Parks/SLO Co. PWD	1	Yes	No
Nacimiento	Mo. Co. Parks/MCWRA	2	Yes	No
San Antonio	CDFG/Mo. Co. Parks	1	Yes	No
San Antonio	Mo. Co. Parks	1	Yes	No
Lake Cachuma	SB Co. Parks	10	Yes	No
* Information compiled on 12/19/08. Field report not received as of this date.				
1. Artificial substrate missing; new artificial substrate deployed.				
2. Site inaccessible due to low lake level and muddy conditions on shore.				

General notes on monitoring site inspections

1. A site inspection may include inspection of an artificial substrate and/or a surface survey (docks etc). At some sites a fairly extensive inspection is performed, at others it may be more limited.
2. For more information about invasive mussel monitoring at Lake Cachuma, contact Liz Mason-Gaspar, Park Naturalist, Santa Barbara County Parks Department, 805-688-4515, lmason@co.santa-barbara.ca.us.

Notes on December 2008 Monitoring Activities

1. Mark Watson, Marine & Fisheries Biologist, Invasive Species Specialist, CDFG Region 4, visited the SLO County Water Quality Laboratory on Dec. 5. Among other things, Mark provided training on microscopic examination of samples (identification of juveniles), and conferred with SLO County PWD and Parks staff on mussel prevention issues.
2. Starting in January 2009, SLO County PWD staff will perform monthly inspections of the CDFG site at Lopez Lake.

INVASIVE MUSSEL PREVENTION REPORT
Santa Margarita Lake Recreation Area
San Luis Obispo County Parks

Period: November 26 through December 25, 2008

Vessel entry	293
Decontaminations	64
Returning tags	225
Rejected (disallowed entry) <i>Table below for breakdown</i>	3
Cabled at time of exit	252

Reasons for rejection:

Water in bilge/hull/ engine	0
Water in live well/bait tank	3
Internal ballast system	
Debris on boat hull	
Refused inspection	

Category Definitions:

Vessel entry: total vessels entering facility, summation of decontaminations and returning tags.

Decontaminations: +140 degree (F) water application to trailer, tow vehicle rear-end, vessel hull and internal vessel areas as required.

Returning tags: vessels with Santa Margarita Lake, Lopez Lake or Cachuma Lake stamped and sealed wire clear tag attached to vessel and trailer (ensures location of prior use). Not subject to decontamination procedure, only thorough inspection.

Rejected: these vessels are not permitted to enter the park due to unacceptable condition, and are not counted in the "Vessel entry " category.

Cabled at time of exit: stamped and sealed wire clear tag attached to vessel and trailer for re-entry at future date.

As of 12/25/08 no mussel species found at Santa Margarita Lake Inspection Station.

Prepared by Santa Margarita Lake Recreation Area Staff, December 26, 2008.

Submitted: to Courtney Howard, 12-26-08 via email.

Rainfall and Reservoir Update

Region	ALERT Precipitation Station	2007-08 Water Year (July '07 - June '08)	2008-09 Water Year Cumulative Total (July '08 - Current)	Average Rainfall (in)	% of Annual Average
Santa Margairta	Santa Margarita (#723)	22.1	5.0	24	21%
San Luis Obispo	SLO Reservoir Gauge (#749)	20.2	3.8	24	16%
Lopez	Lopez Rec Area (#707)	17.3	3.6	23	16%
Atascadero	Atascadero (#711)	13.2	2.2	17	13%
Cambria	<i>Santa Rosa at Main St. (# 717)</i>	<i>*11.0</i>	2.8	22	13%
	Rocky Butte (# 703)	33.3	8.7	39	22%
	Hwy 46 W 7 Mi (# 3113)	19.8	3.9	29	13%

* Due to equipment malfunction, not all rainfall was recorded at this site. Precipitation data for "Rocky Butte" and "Hwy 46 W 7 Mile" are provided for alternate reference.

Please note, this table contains provisional data from automated gauges and has not been verified.

Reservoir	Date	Water Elevation (ft)	Spillway Elevation (ft)	Storage (acre-feet)	Capacity (%)
Nacimiento Reservoir	December 30, 2008	733.1	800.0	100,165	30%
	December 30, 2007	735.8			
Lopez Reservoir	December 30, 2008	498.6	523.0	30,358	61%
	December 30, 2007	502.5			
Salinas Reservoir	December 15, 2008	1291.4	1300.7	17,651	74%
	December 15, 2007	1284.8			
Whale Rock Reservoir	December 17, 2008	188.5	216.0	26,154	64%
	December 17, 2007	195.5			
Twitchell Reservoir	December 26, 2008	N/A	651.5	0	0%