

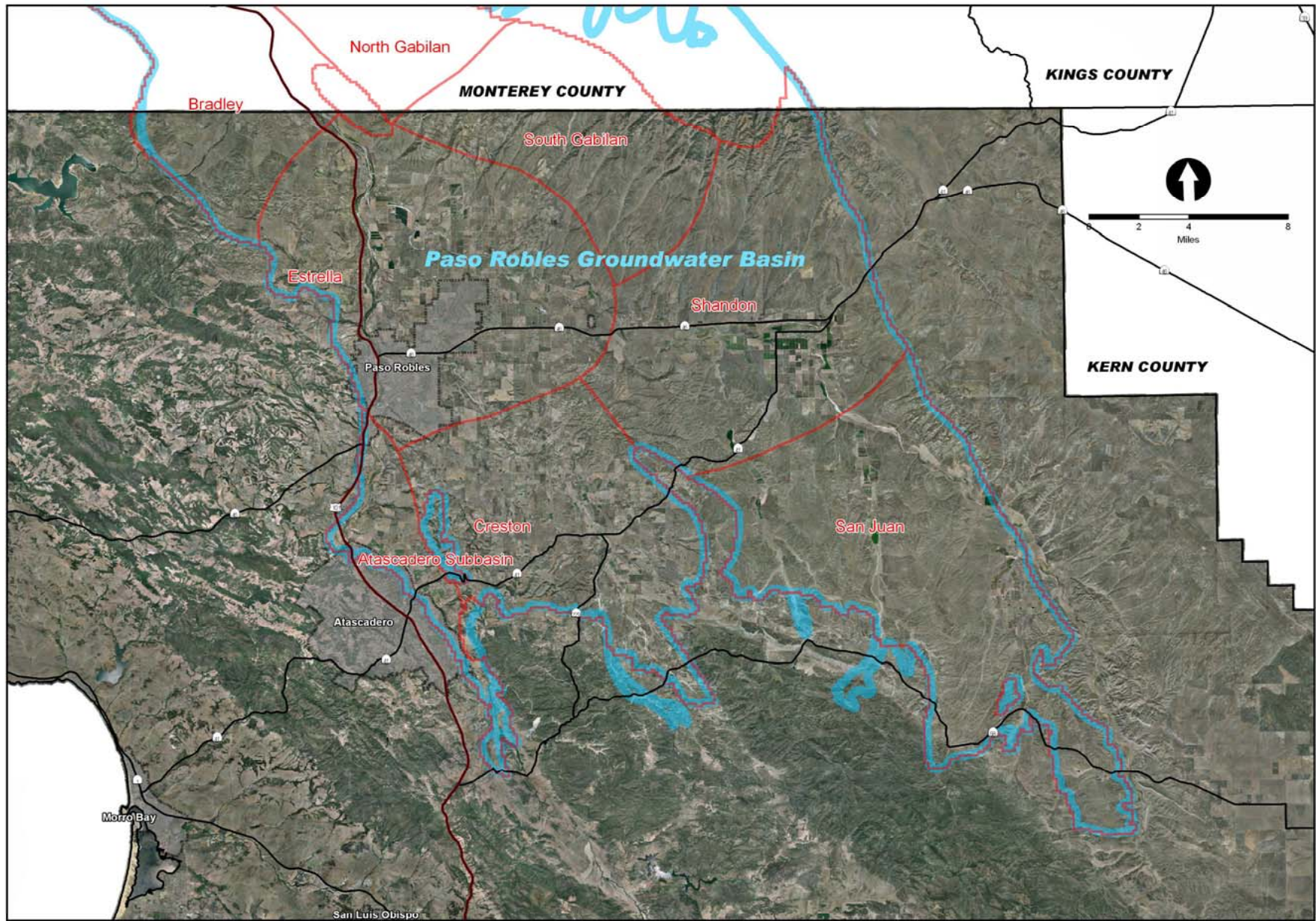
Paso Robles Groundwater Basin Resource Capacity Study

Water Resource Advisory Committee

June 3, 2009

WRAC
June 3, 2009





PRGWB

Resource Capacity Study

- **Part of the Resource Management System**
- **Board directed preparation in January 2007**
- **Establishes Level of Severity**
- **Action Recommendations**

WRAC
June 3, 2009



PRGWB

Resource Capacity Study

- Phase 1 completed in 2008
- Additional data needed
- Todd Engineers Pumping Evaluation
- 2006 pumping data

WRAC
June 3, 2009



Level I	Resource Capacity Problem – Projected consumption estimated to exceed dependable supply within 9 years
Level II	Diminishing Resource Capacity – Seven year time to develop supplementary water for delivery to users.
Level III	Resource Capacity Met or Exceeded – Resource is being used at or beyond its estimated dependable supply or will deplete dependable supply before new supplies are developed.

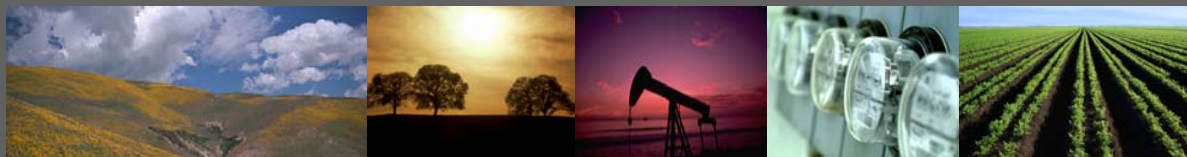


Table 1

Total Groundwater Pumping by User (1997, 2000, 2006) (afy)

Groundwater User	1997	2000	2006
Net Agriculture	49,683 afy	56,551 afy	58,680 afy
Urban	13,513	14,629	15,665
Rural	9,400	9,993	10,891
Small Community	---	----	594
Small Commercial	1,465	1,465	2,323
Total	74,061	82,638	88,154

WRAC
June 3, 2009



PRGWB

Resource Capacity Study

Constraints

- Groundwater Law
- Limited jurisdiction/authority
- Data limitations (pumping/data points)
- Water use estimates
- Rainfall

WRAC
June 3, 2009



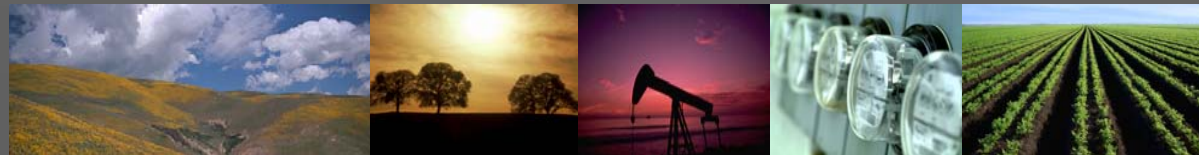
PRGWB

Resource Capacity Study

Conclusions

- Groundwater levels continue to drop in portions of the basin
- Water use leveling out
- Perennial yield
- Conservation

WRAC
June 3, 2009



PRGWB

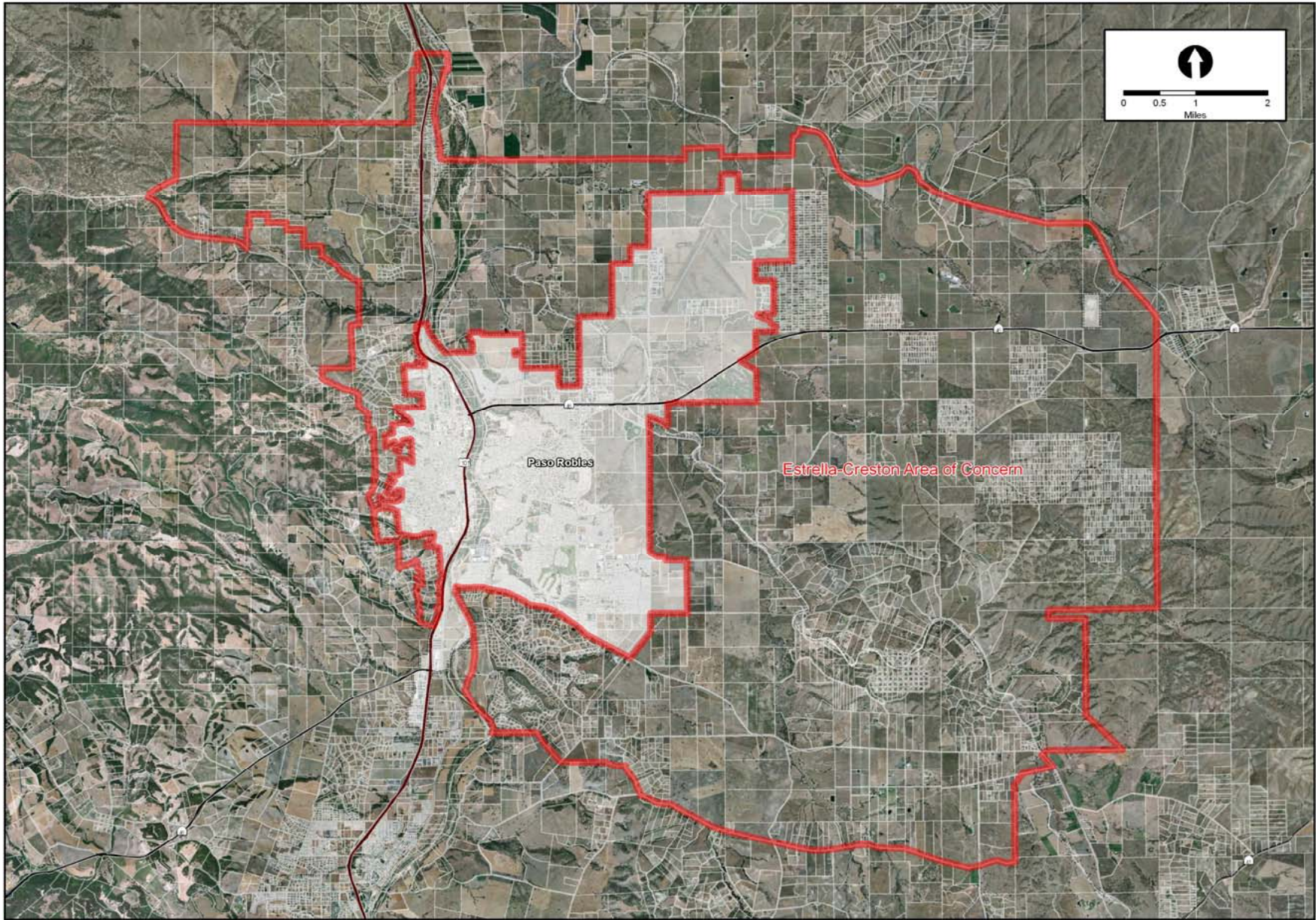
Resource Capacity Study

Recommendations

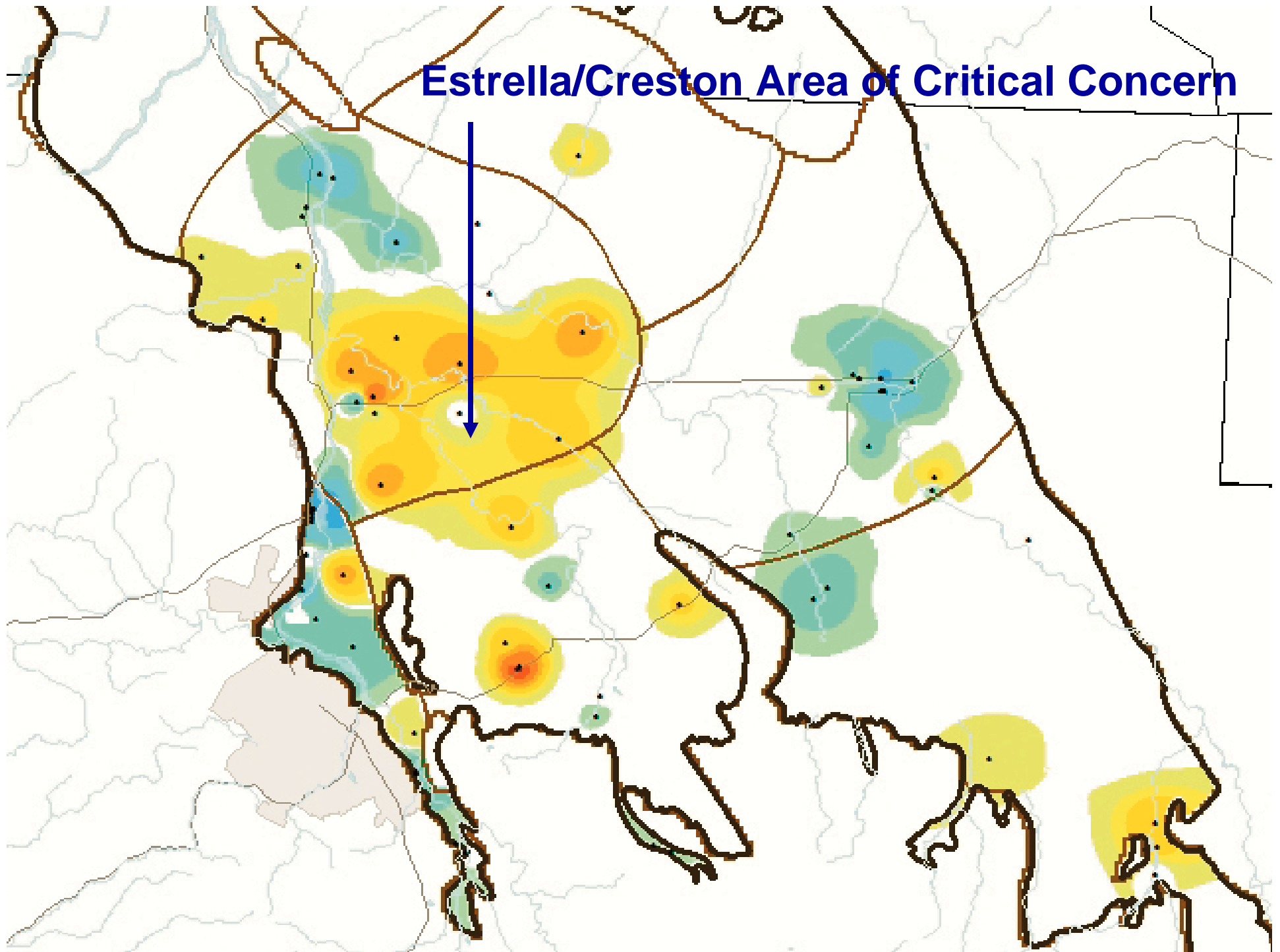
- Groundwater Management Plan
 - Agricultural Conservation
 - New Development (offset water use)
 - Municipal Conservation
 - Future Pumping updates
-

WRAC
June 3, 2009





Estrella/Creston Area of Critical Concern



Resource Capacity Study

Schedule

Planning Commission – June 11, 2009

Board of Supervisors – July 14, 2009

Implementation

Other Actions

WRAC
June 3, 2009



Resource Capacity Study

QUESTIONS???

WRAC
June 3, 2009

