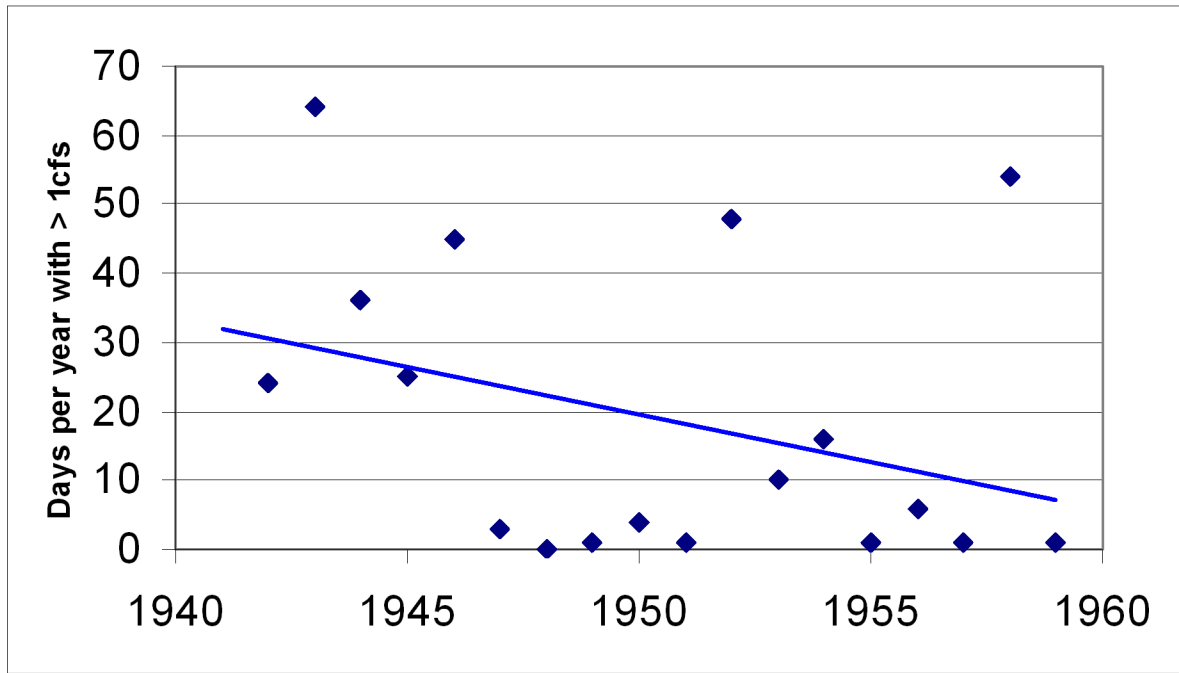
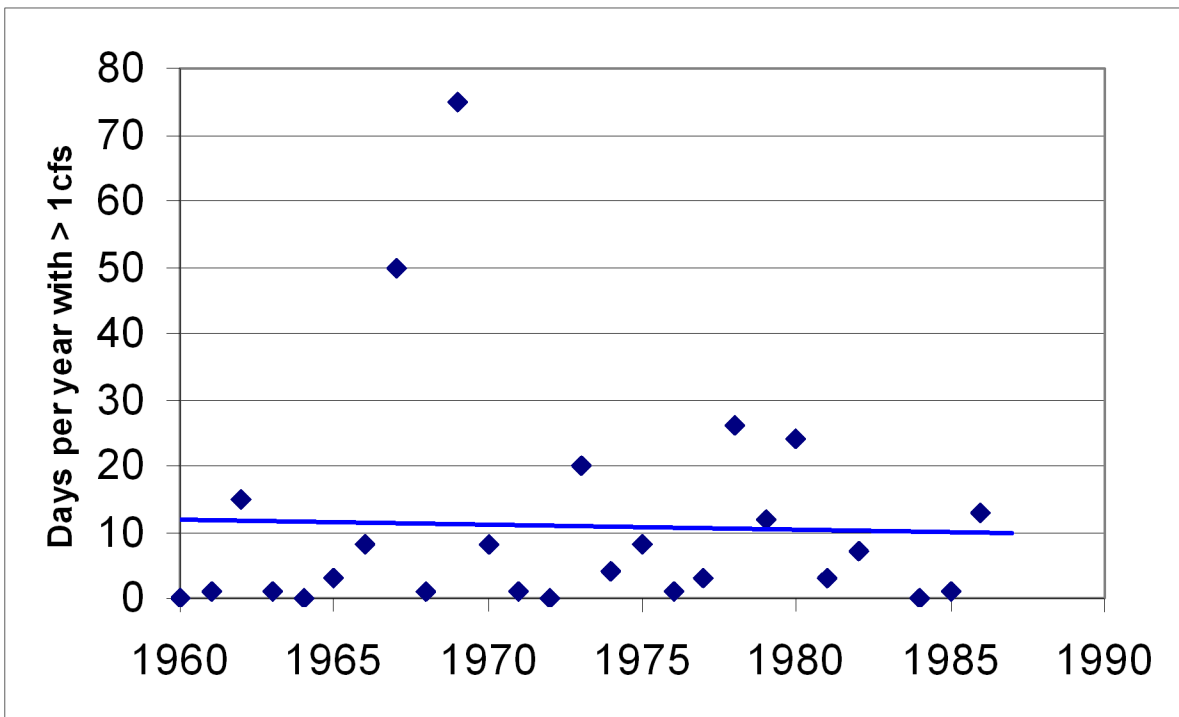


Pre-Twitchell Dam



Post-Twitchell Dam



Notes:

1. Values exceeding the mean plus two standard deviations are considered outliers and were removed.
2. Pre-Twitchell Dam dataset illustrates decreasing trend in number of days per year that the Santa Maria River near Guadalupe was flowing.
3. Post-Twitchell Dam dataset shows a stabilized trend with an average of 10 days per year with water flowing in the River. This is a consequence of management of flows with the Twitchell Dam.

