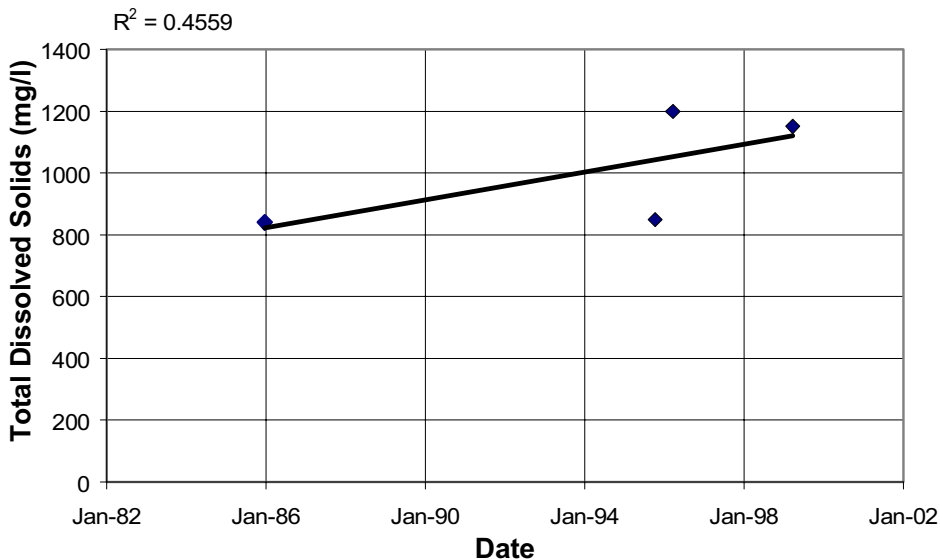
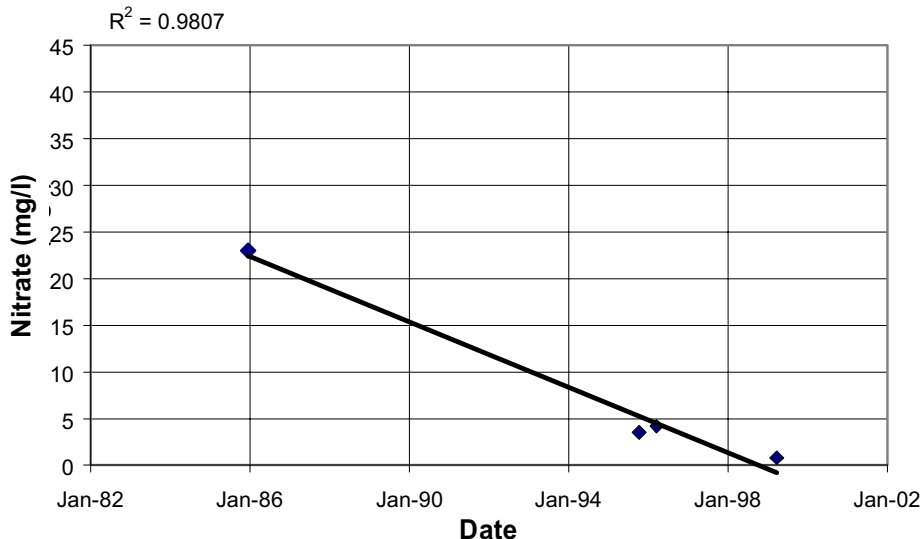
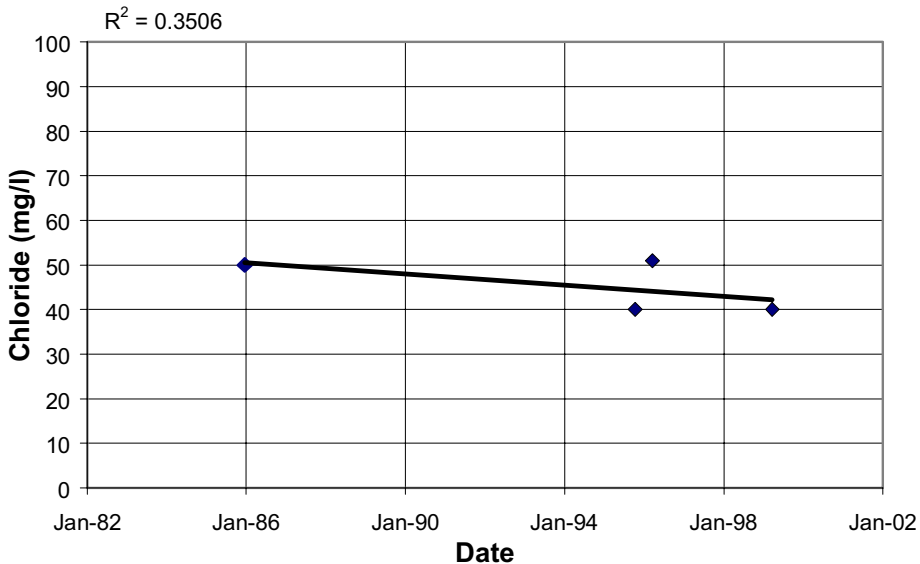


**APPENDIX B
WATER QUALITY TRENDS**

24S/11E-14Q01

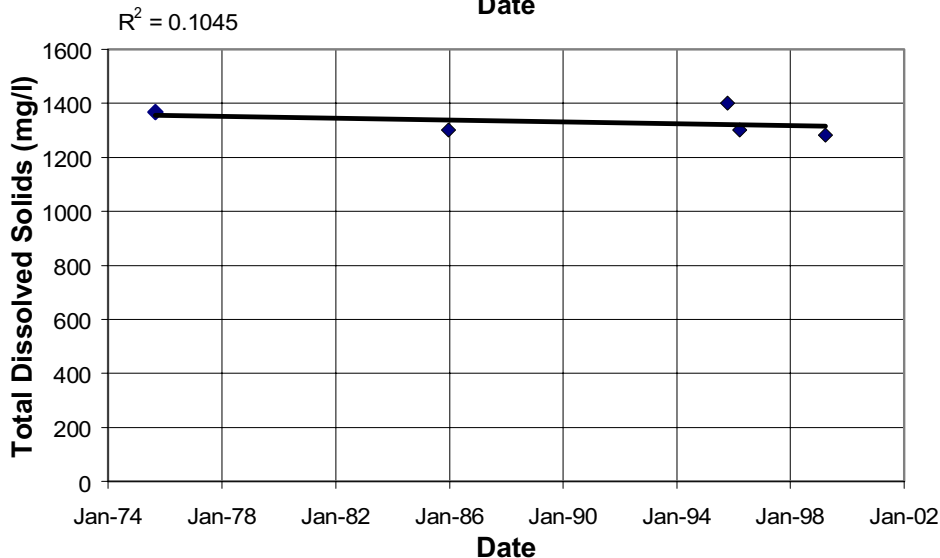
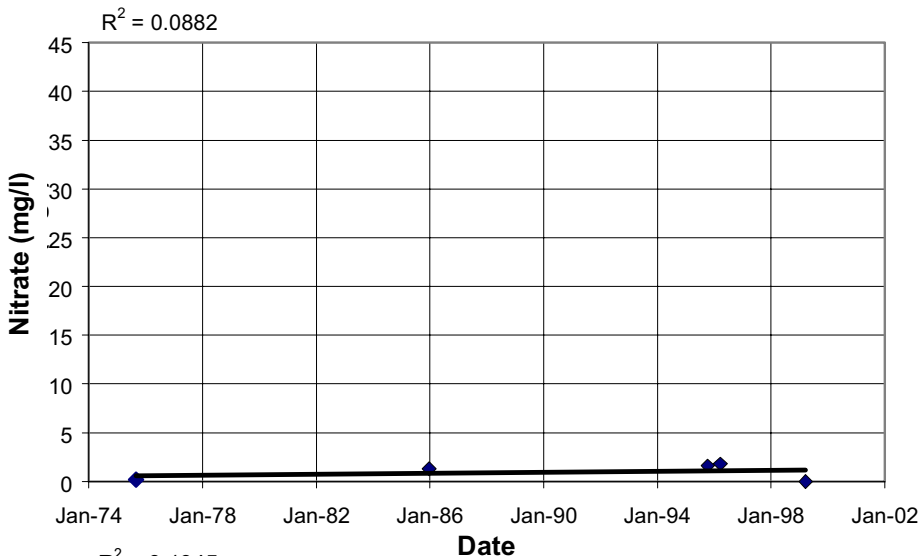
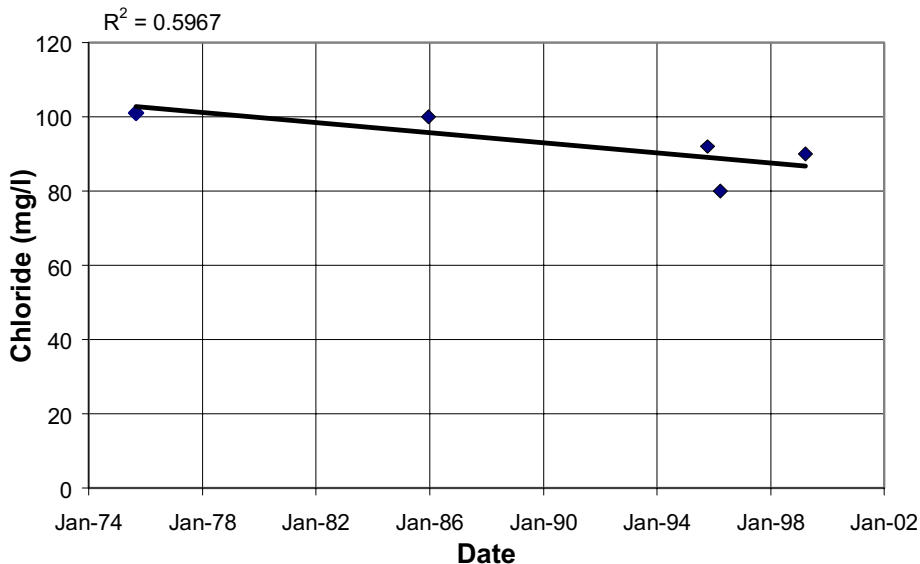


NOTE: The calculated trendlines are shown, but they may not be real trends. See text for discussion of trends at this well.

**CHEMICAL
HYDROGRAPHS**
24S/11E-14Q01
Bradley Area
Paso Robles Groundwater
Basin Study



24S/11E-26C01

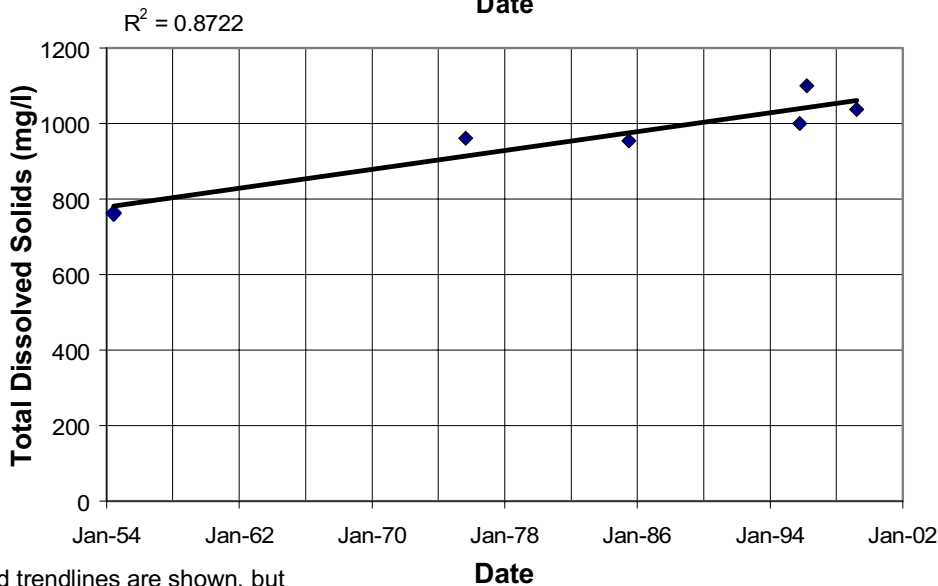
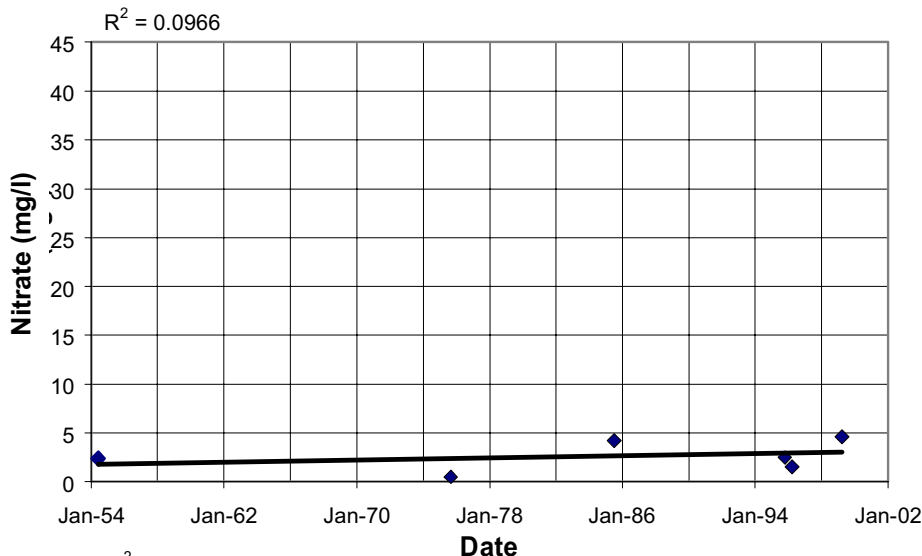
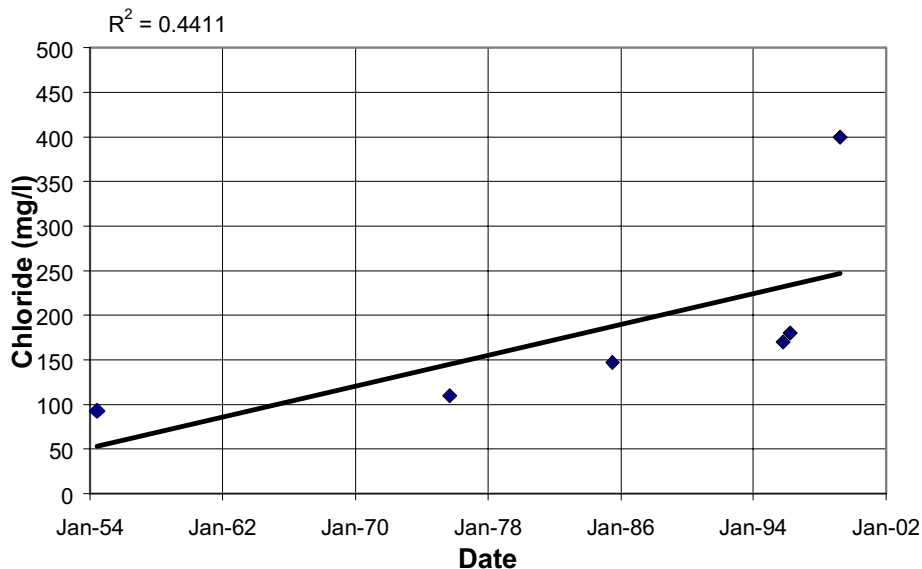


NOTE: The calculated trendlines are shown, but they may not be real trends. See text for discussion of trends at this well.

**CHEMICAL
HYDROGRAPHS**
24S/11E-26C01
Bradley Area
Paso Robles Groundwater
Basin Study



24S/11E-35E01

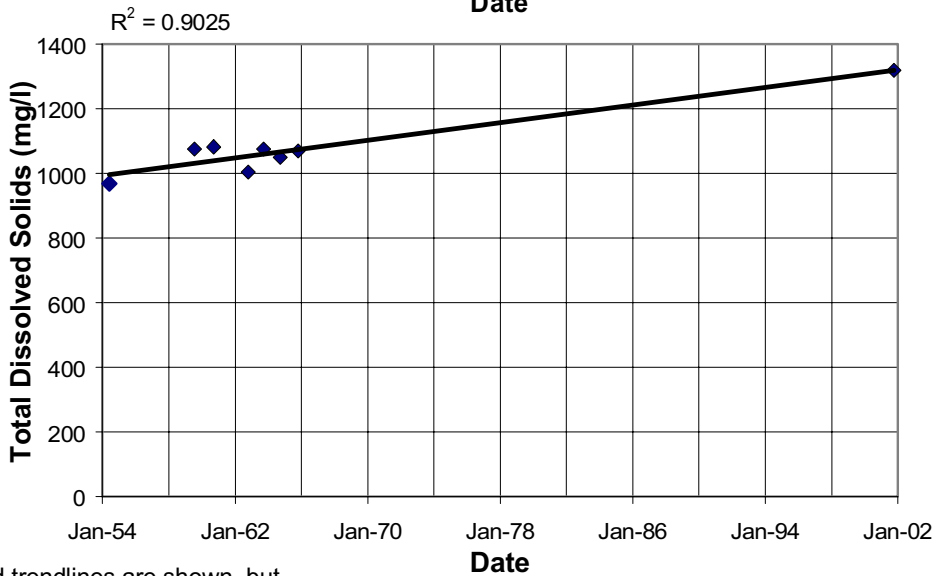
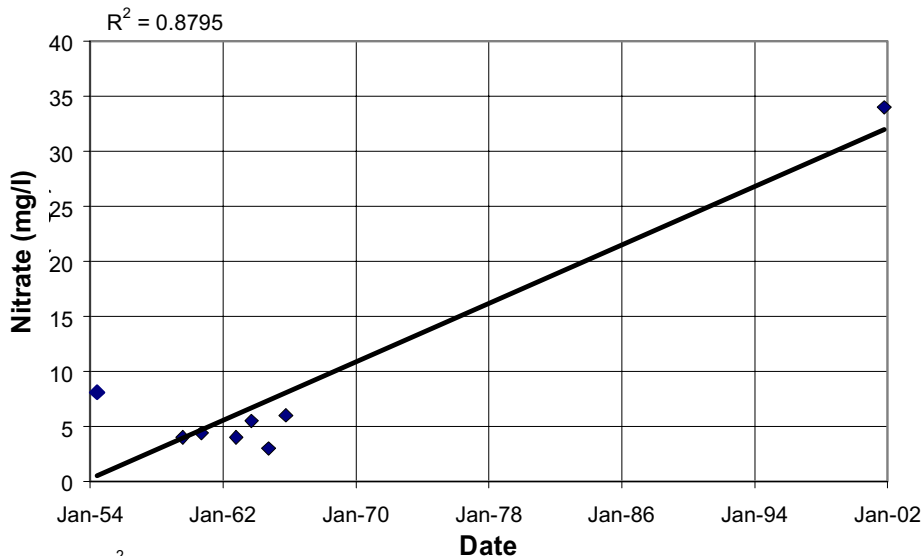
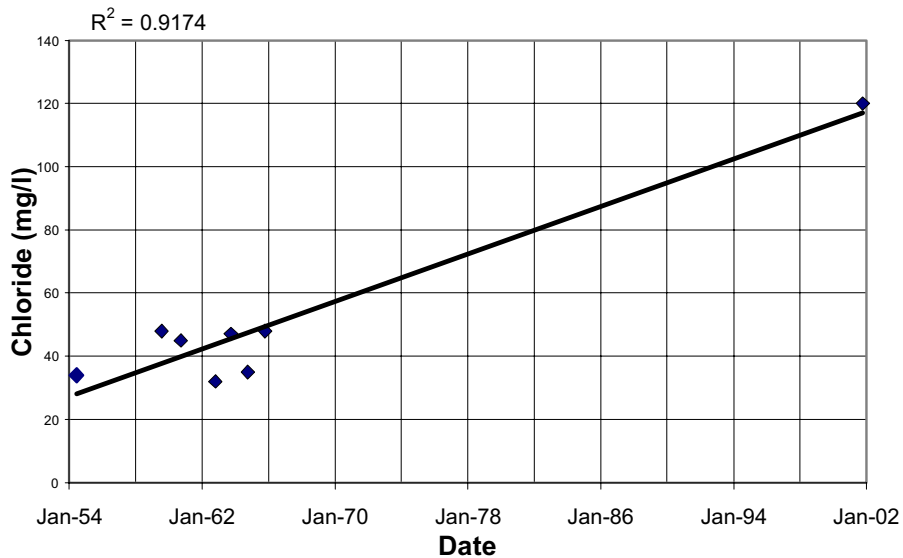


NOTE: The calculated trendlines are shown, but they may not be real trends. See text for discussion of trends at this well.

**CHEMICAL
HYDROGRAPHS**
24S/11E-35E01
Bradley Area
Paso Robles Groundwater
Basin Study



24S/12E-17L, L01, L02

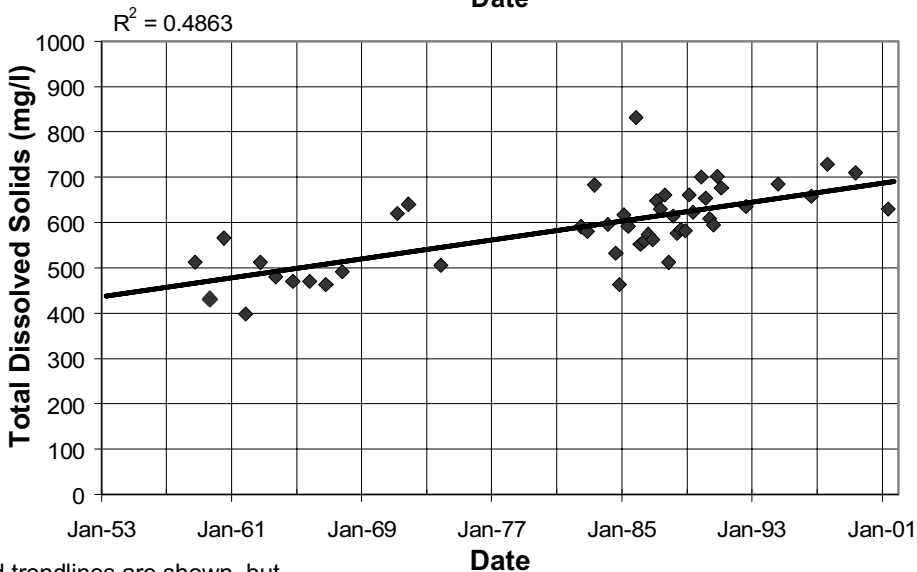
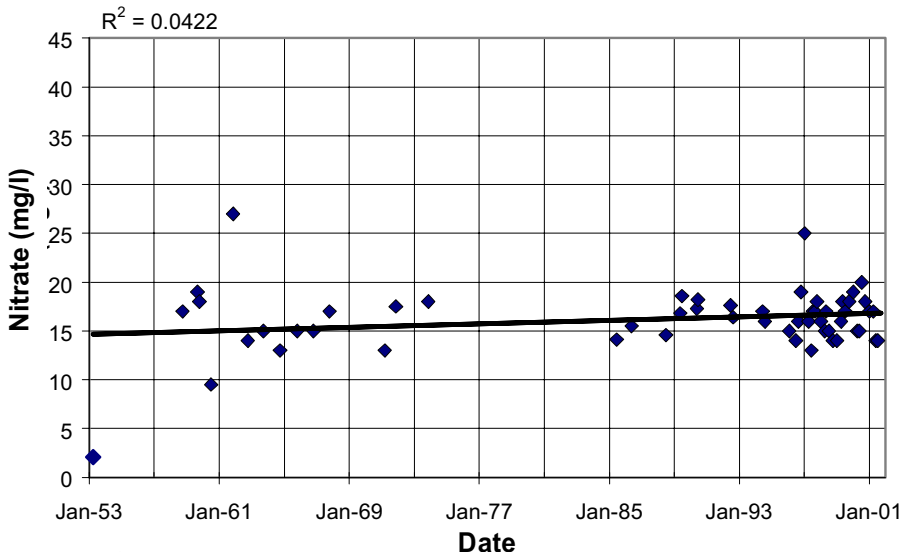
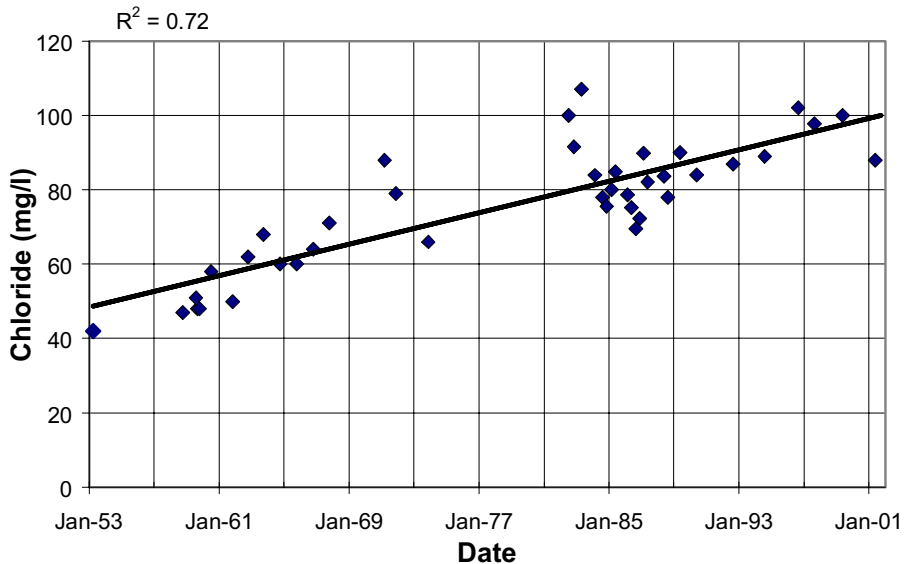


NOTE: The calculated trendlines are shown, but they may not be real trends. See text for discussion of trends at this well.

**CHEMICAL
HYDROGRAPHS**
24S/12E-17L, L01, L02
Gabilan Area
Paso Robles Groundwater
Basin Study



25S/12E-16N01

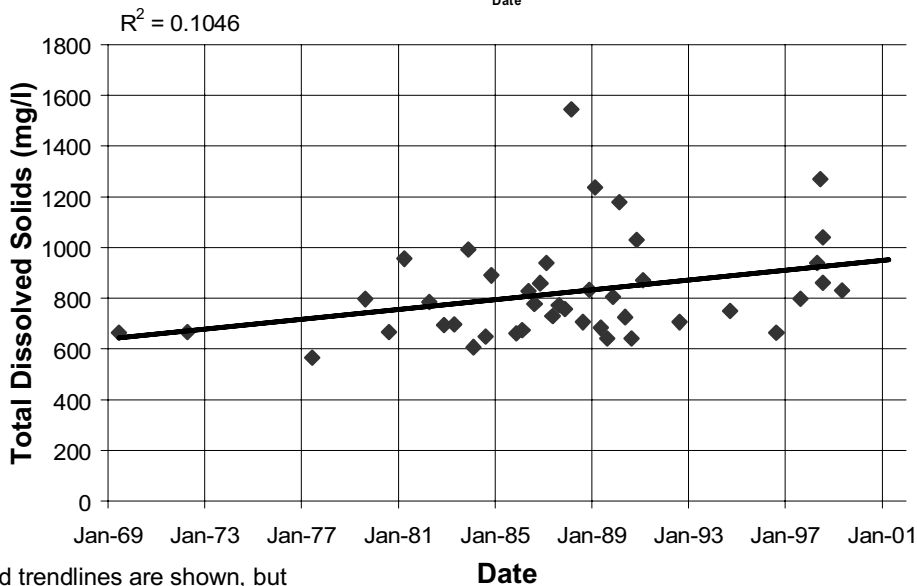
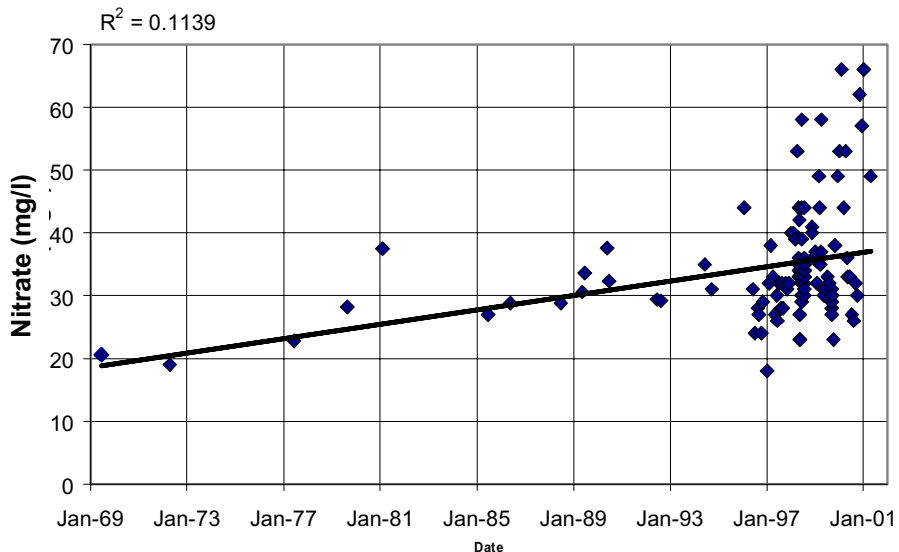
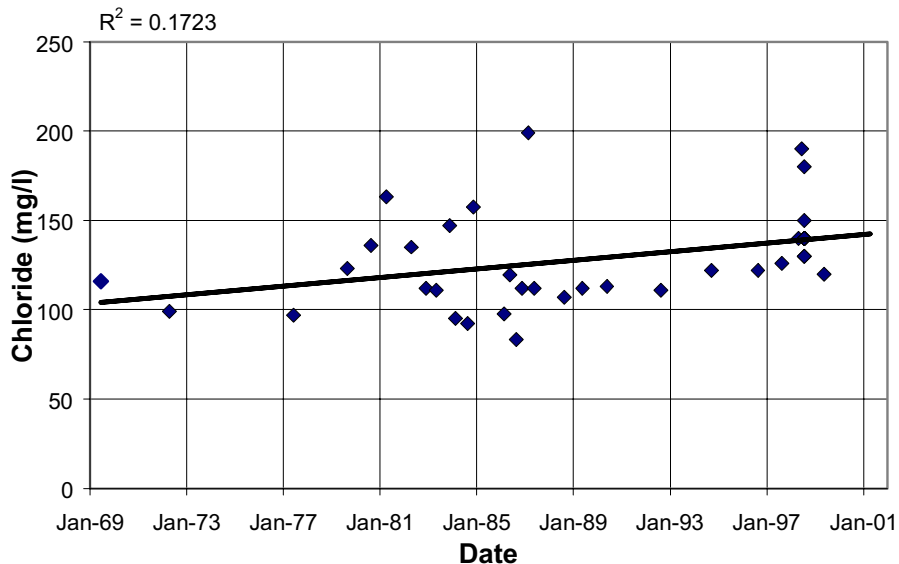


NOTE: The calculated trendlines are shown, but they may not be real trends. See text for discussion of trends at this well.

**CHEMICAL
HYDROGRAPHS**
25S/12E-16N01
Estrella Area
Paso Robles Groundwater
Basin Study



25S/12E-21G01

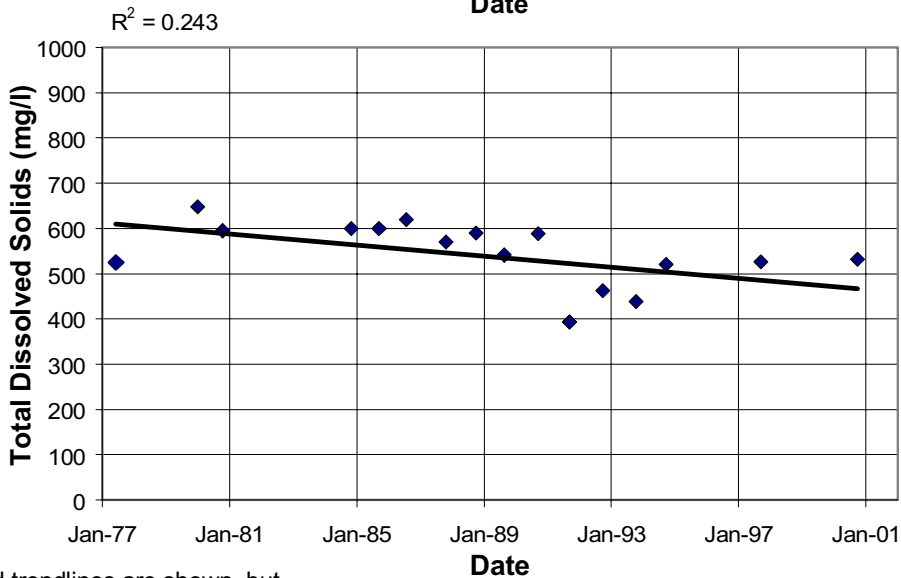
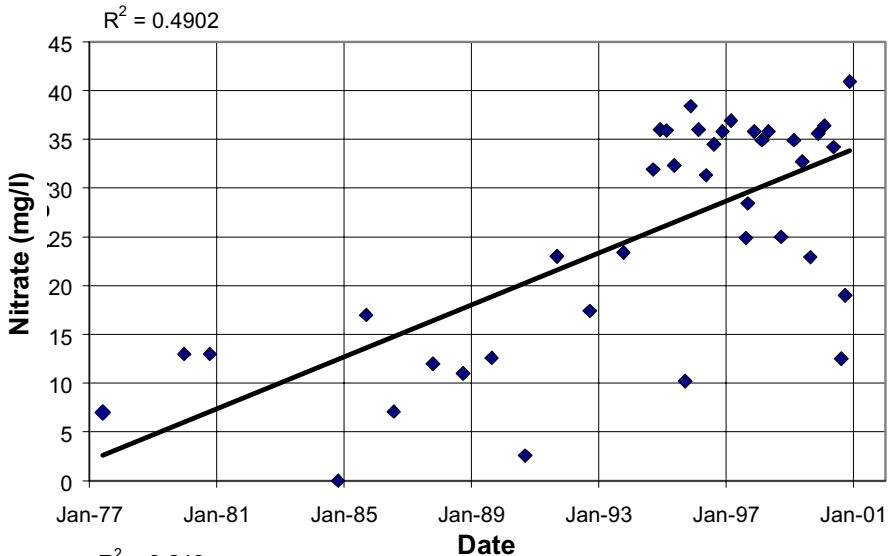
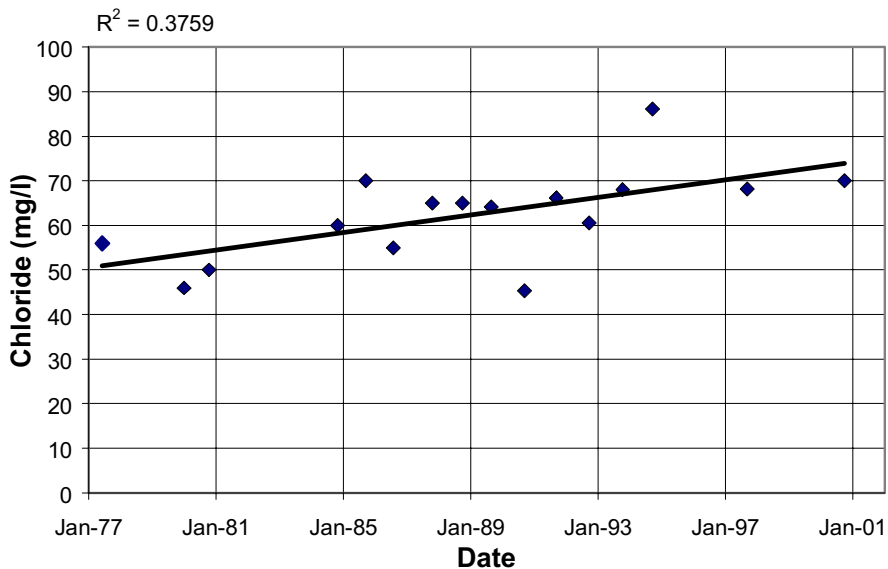


NOTE: The calculated trendlines are shown, but they may not be real trends. See text for discussion of trends at this well.

**CHEMICAL
HYDROGRAPHS**
24S/12E-21G01
Estrella Area
Paso Robles Groundwater
Basin Study



26S/12E-22J01



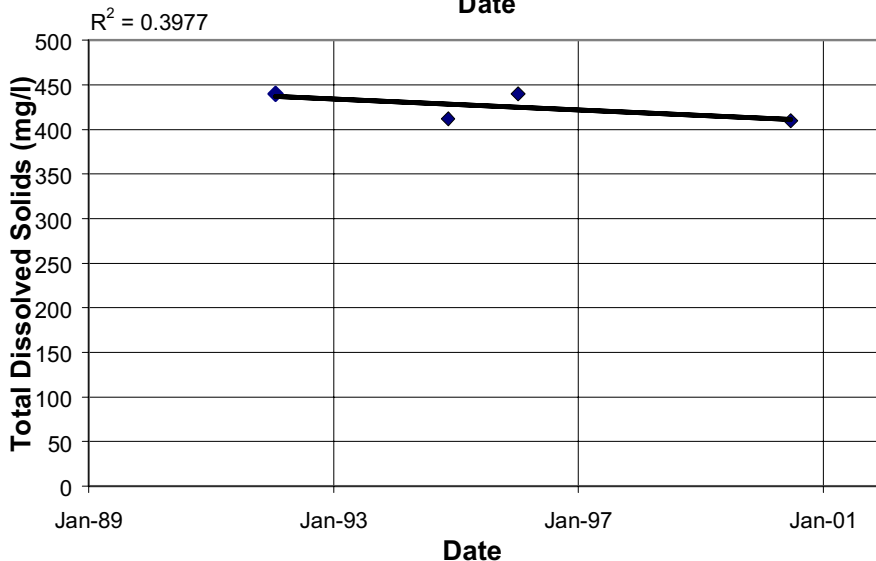
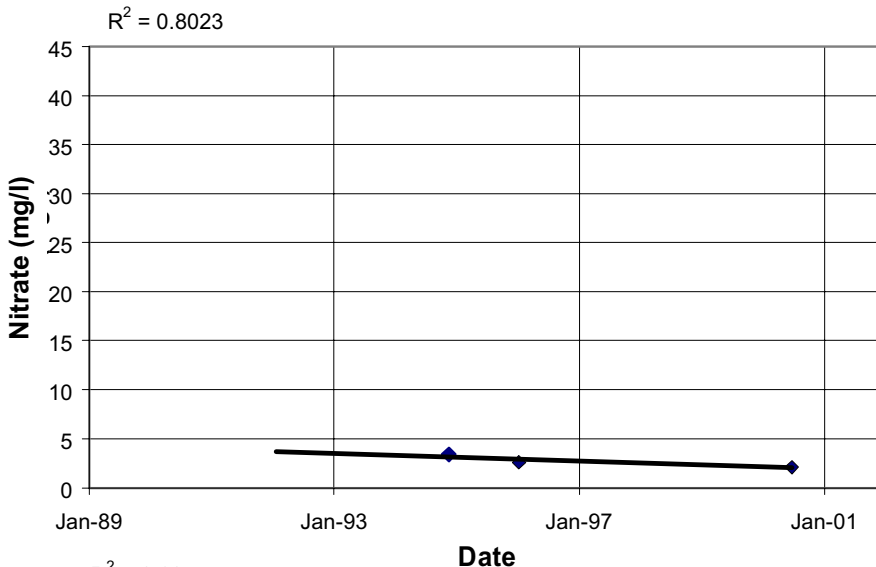
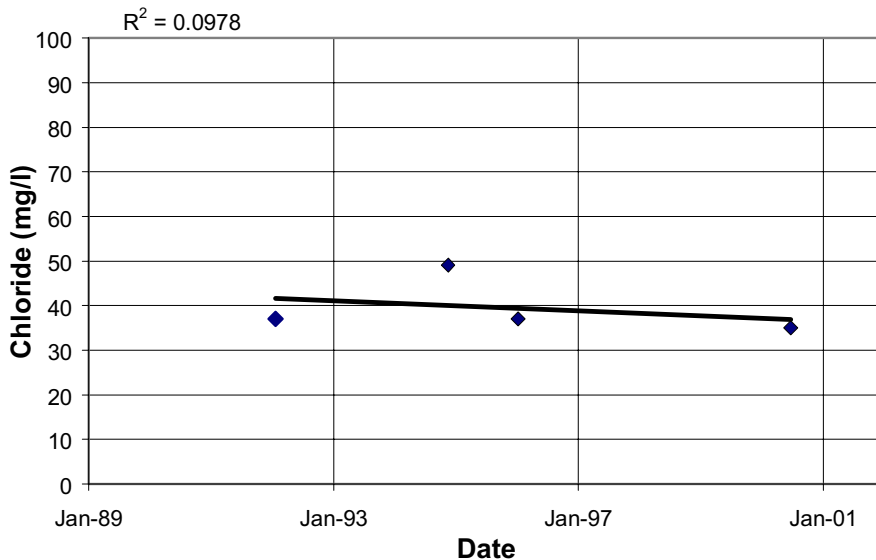
NOTE: The calculated trendlines are shown, but they may not be real trends. See text for discussion of trends at this well.

**CHEMICAL
HYDROGRAPHS**
26S/12E-22J01
Estrella Area
Paso Robles Groundwater
Basin Study





26S/13E-15F01

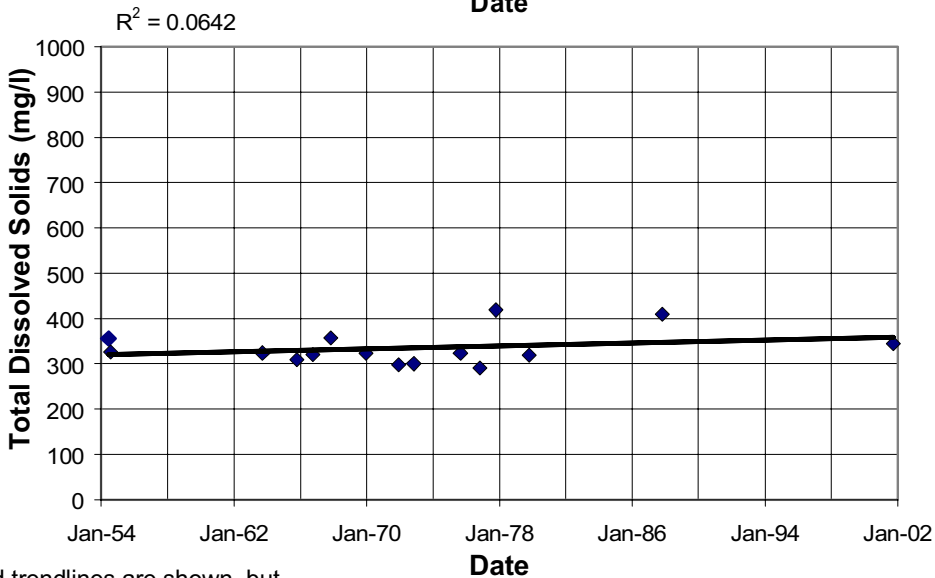
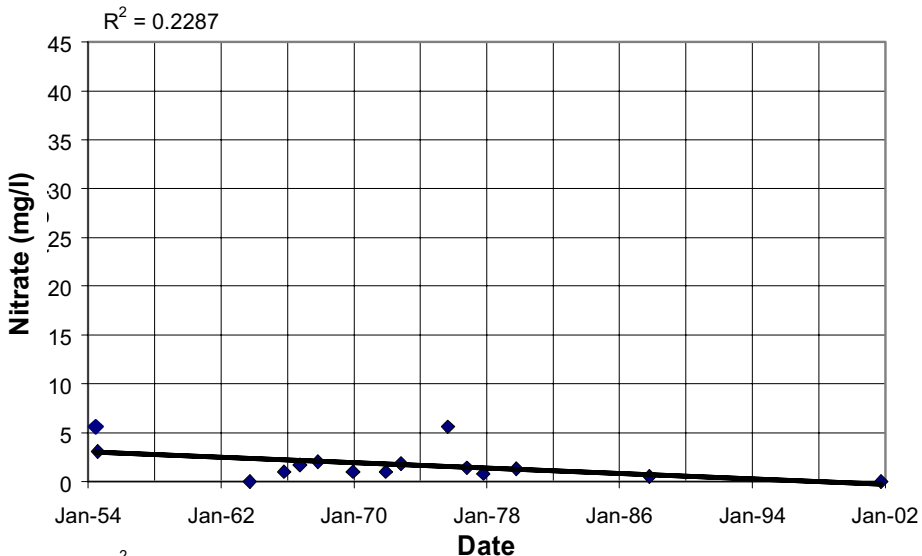
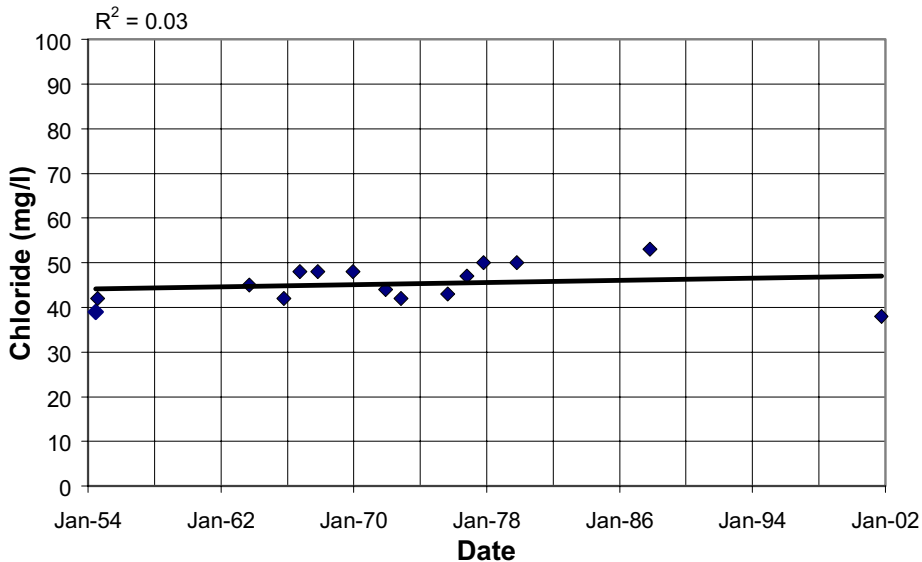


NOTE: The calculated trendlines are shown, but they may not be real trends. See text for discussion of trends at this well.

**CHEMICAL
HYDROGRAPHS**
26S/13E-15F01
Estrella Area
Paso Robles Groundwater
Basin Study



26S/13E-28J01, K, L02

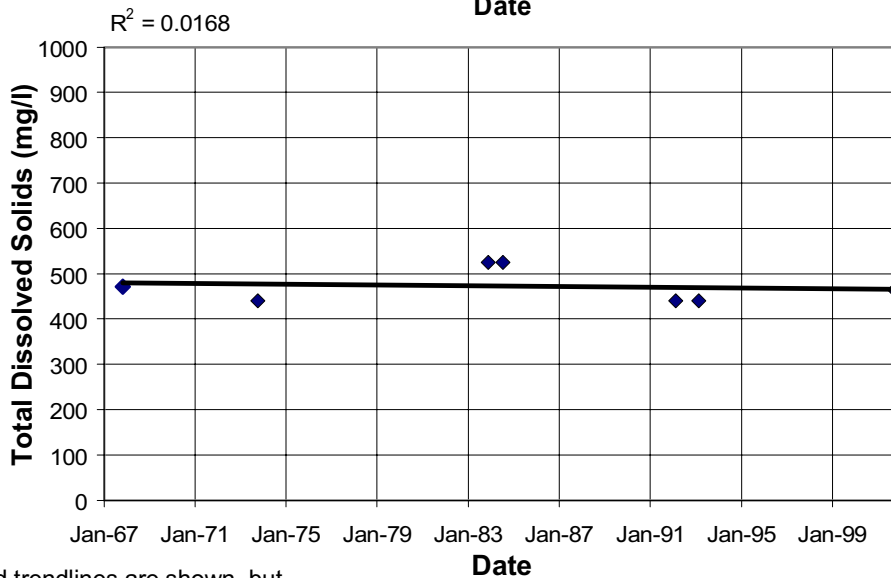
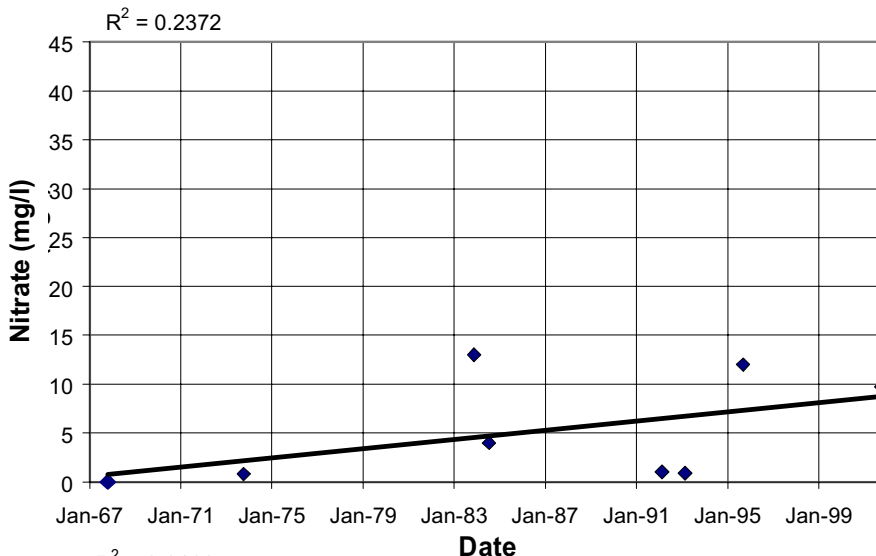
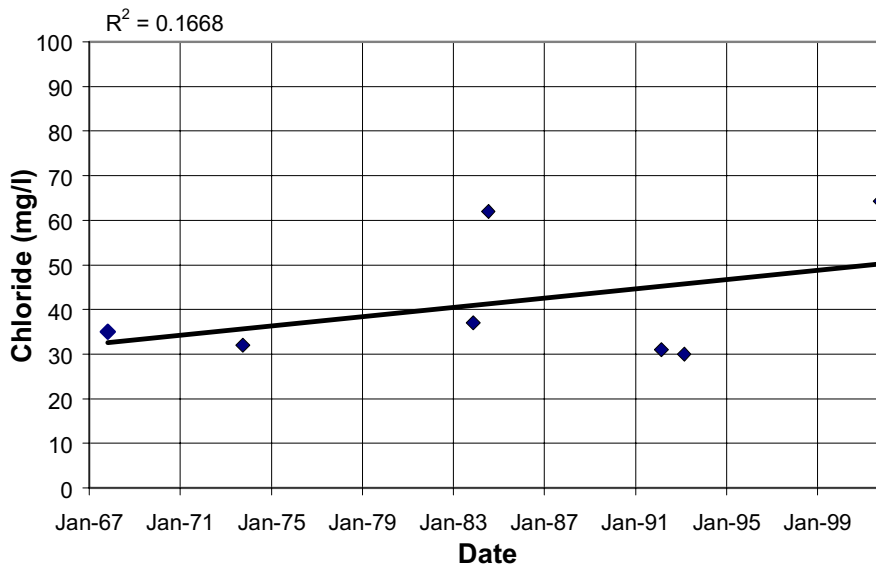


NOTE: The calculated trendlines are shown, but they may not be real trends. See text for discussion of trends at this well.

**CHEMICAL
HYDROGRAPHS**
26S/13E-28J01, K, L02
Estrella Area
Paso Robles Groundwater
Basin Study



26S/14E-18J01

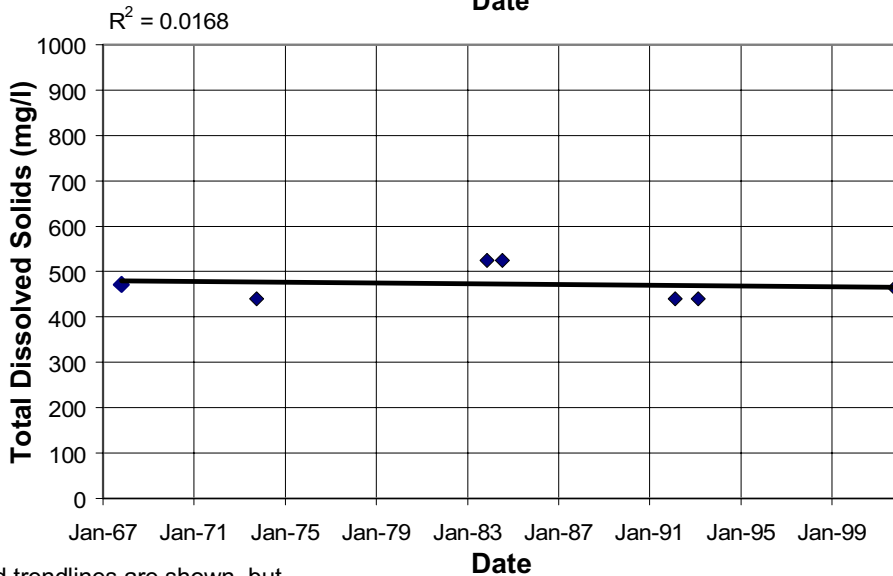
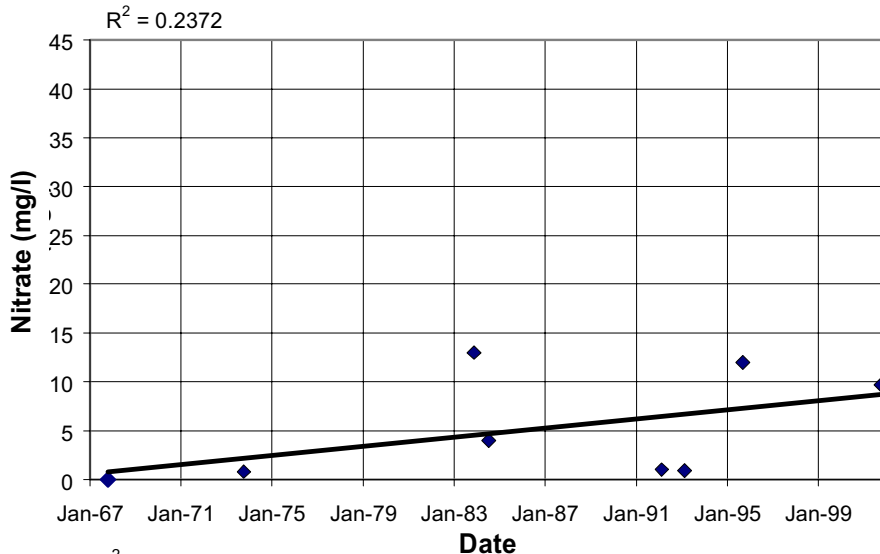
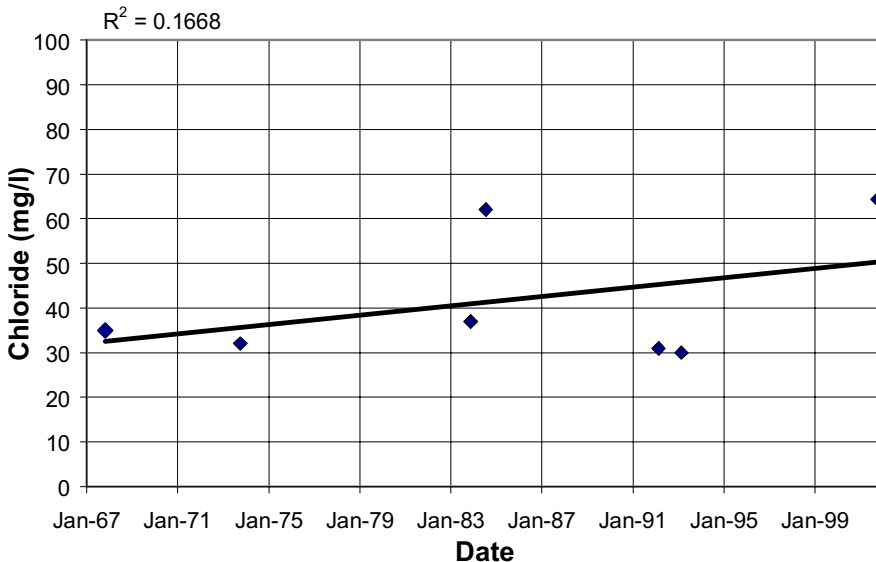


NOTE: The calculated trendlines are shown, but they may not be real trends. See text for discussion of trends at this well.

**CHEMICAL
HYDROGRAPHS**
26S/14E-18J01
Shandon Area
Paso Robles Groundwater
Basin Study



26S/14E-35D01

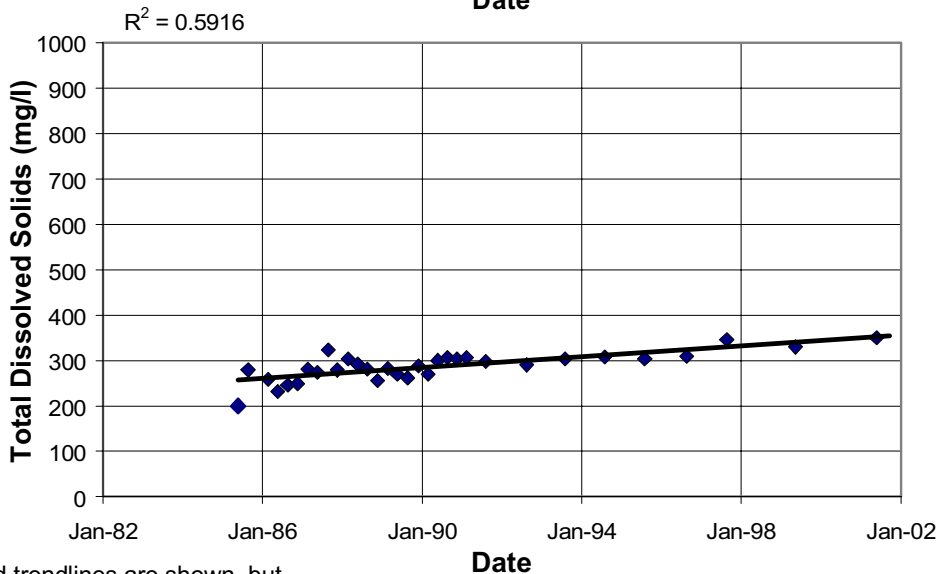
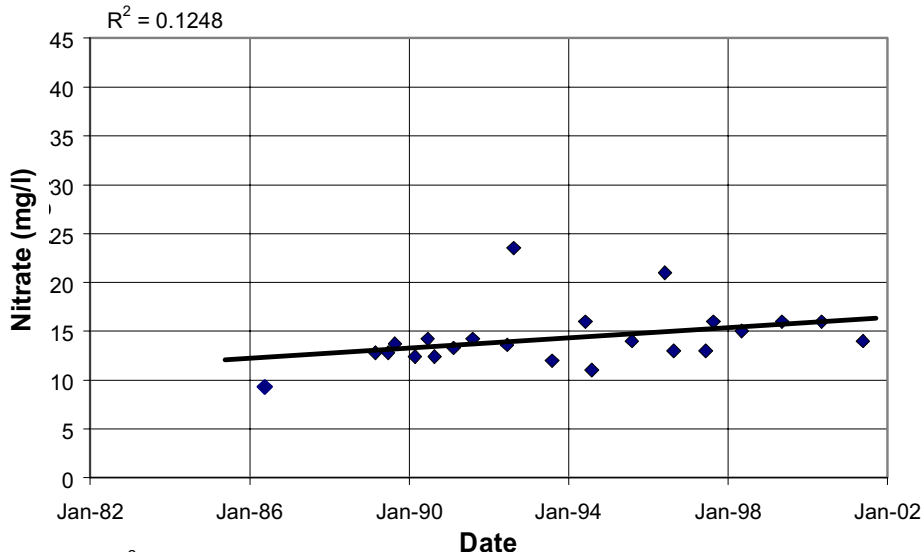
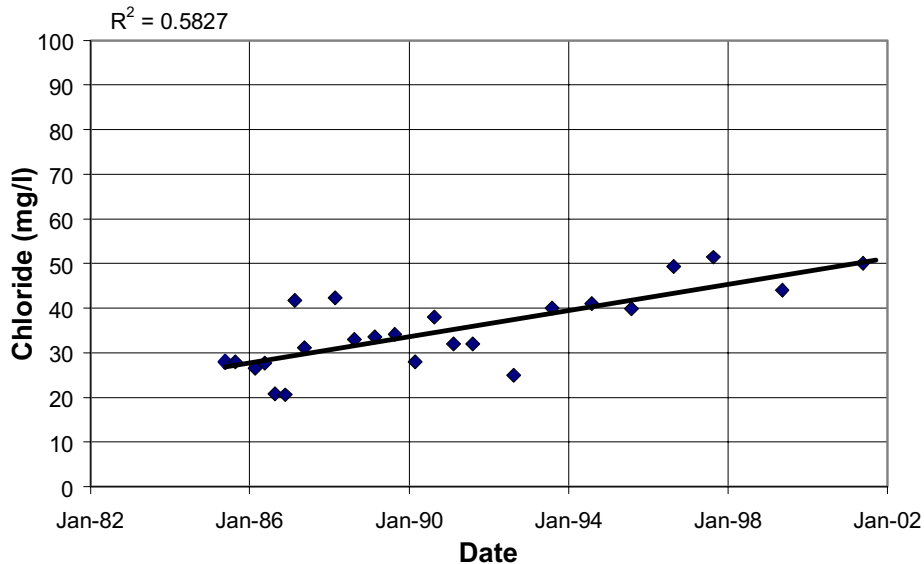


NOTE: The calculated trendlines are shown, but they may not be real trends. See text for discussion of trends at this well.

**CHEMICAL
HYDROGRAPHS**
26S/14E-35D01
Shandon Area
Paso Robles Groundwater
Basin Study



26S/15E-20B03

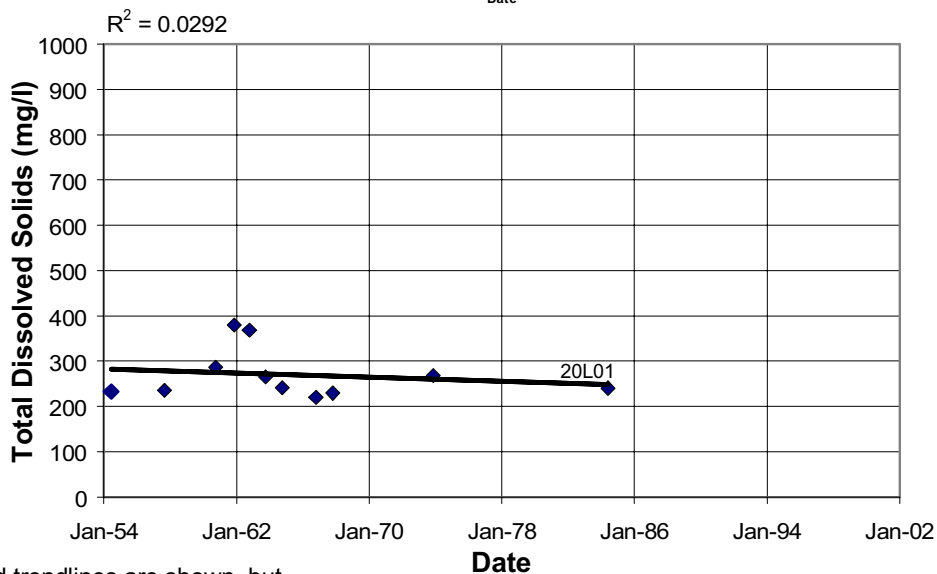
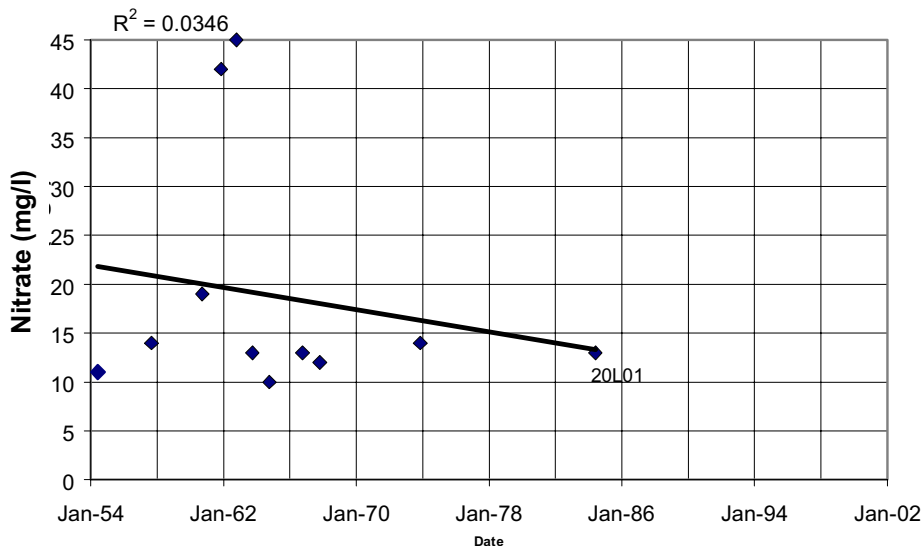
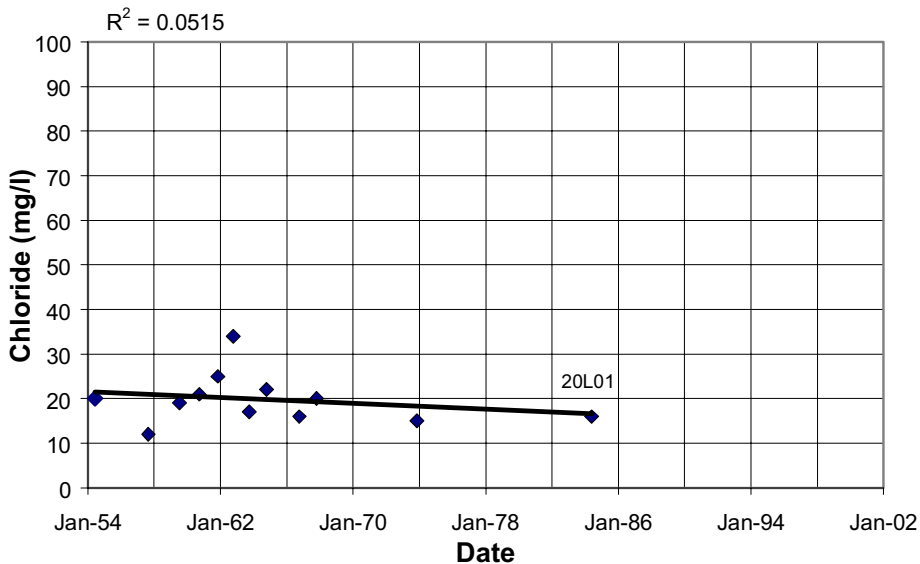


NOTE: The calculated trendlines are shown, but they may not be real trends. See text for discussion of trends at this well.

**CHEMICAL
HYDROGRAPHS**
26S/15E-20B03
Shandon Area
Paso Robles Groundwater
Basin Study



26S/15E-20L01, N01

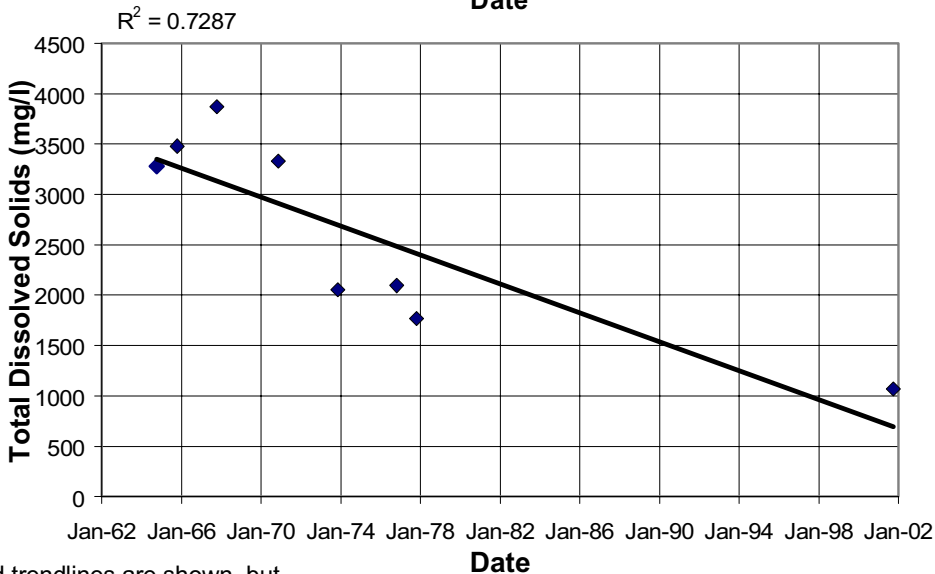
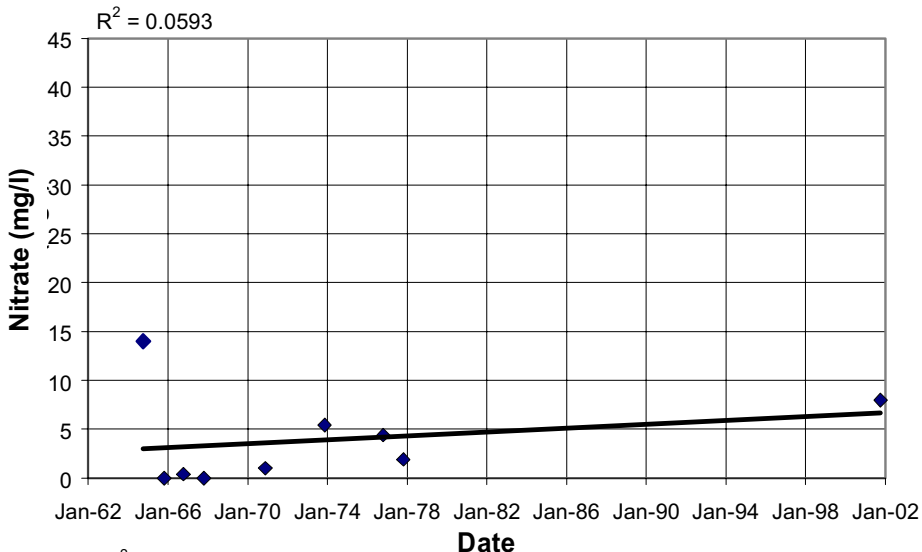
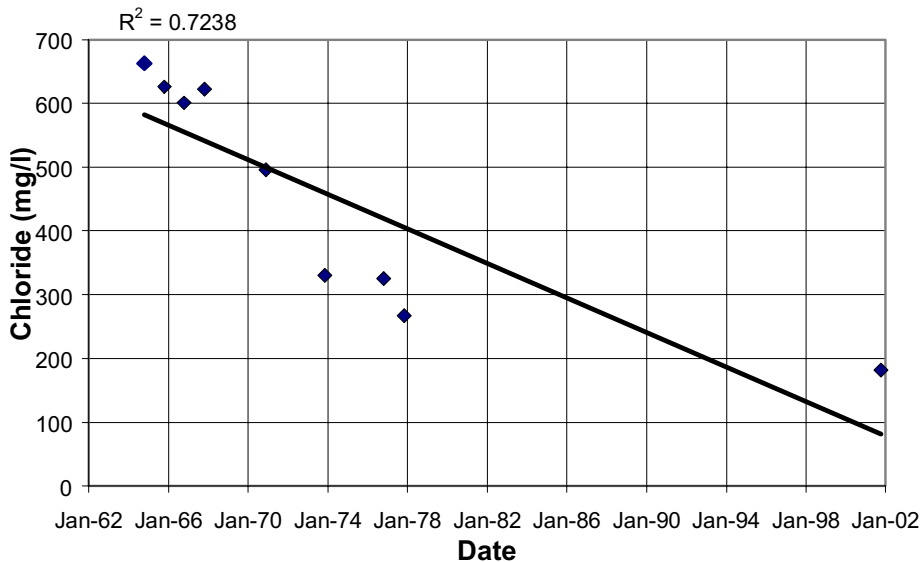


NOTE: The calculated trendlines are shown, but they may not be real trends. See text for discussion of trends at this well.

**CHEMICAL
HYDROGRAPHS**
26S/15E-20L01, N01
Shandon Area
Paso Robles Groundwater
Basin Study



26S/15E-28Q02

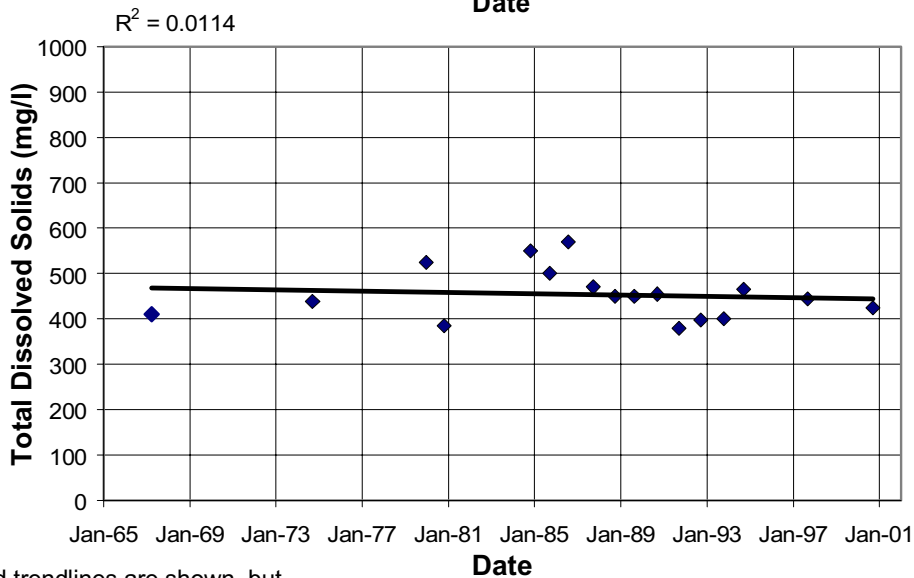
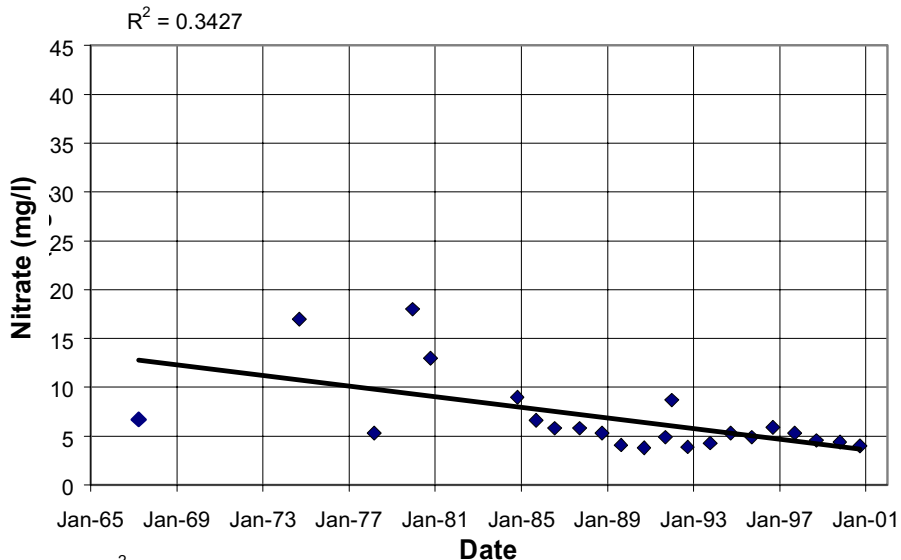
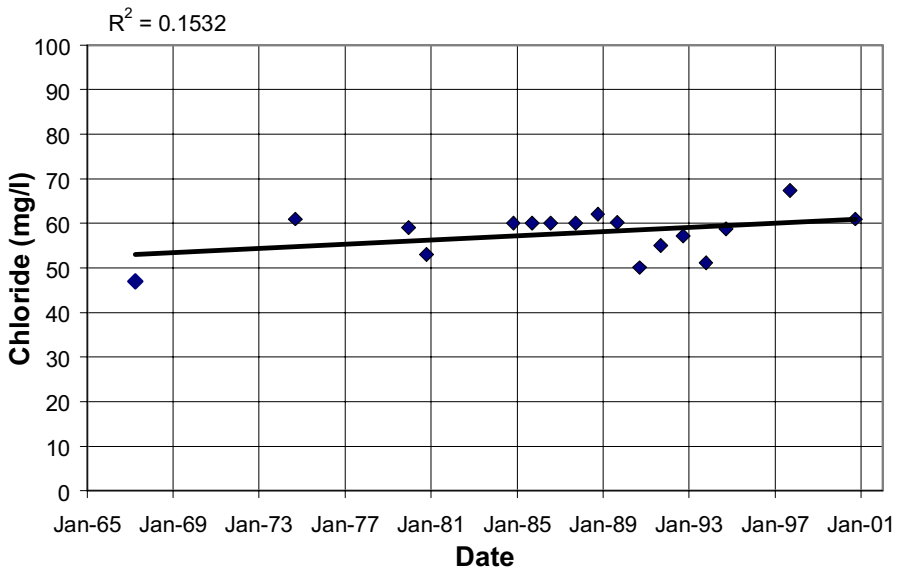


NOTE: The calculated trendlines are shown, but they may not be real trends. See text for discussion of trends at this well.

**CHEMICAL
HYDROGRAPHS**
26S/15E-28Q02
Shandon Area
Paso Robles Groundwater
Basin Study



27S/12E-2E01

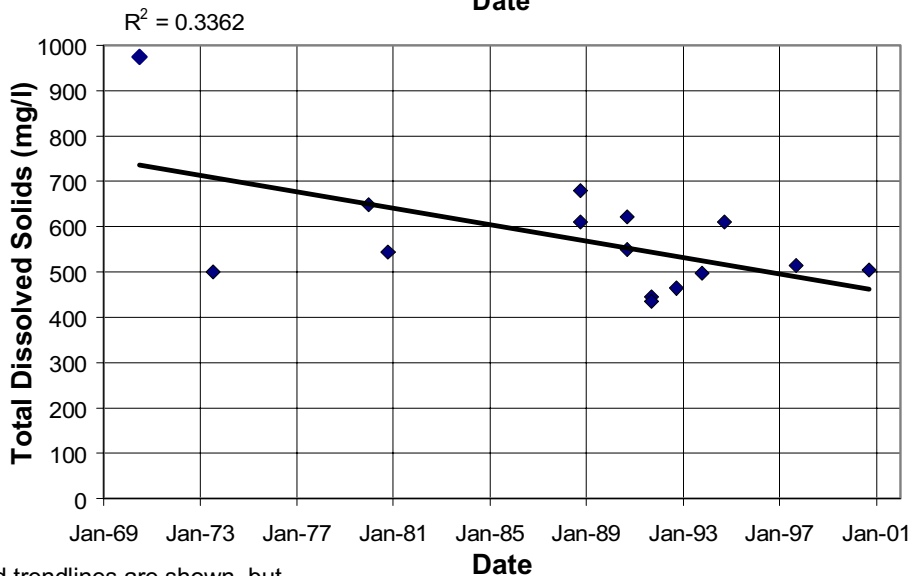
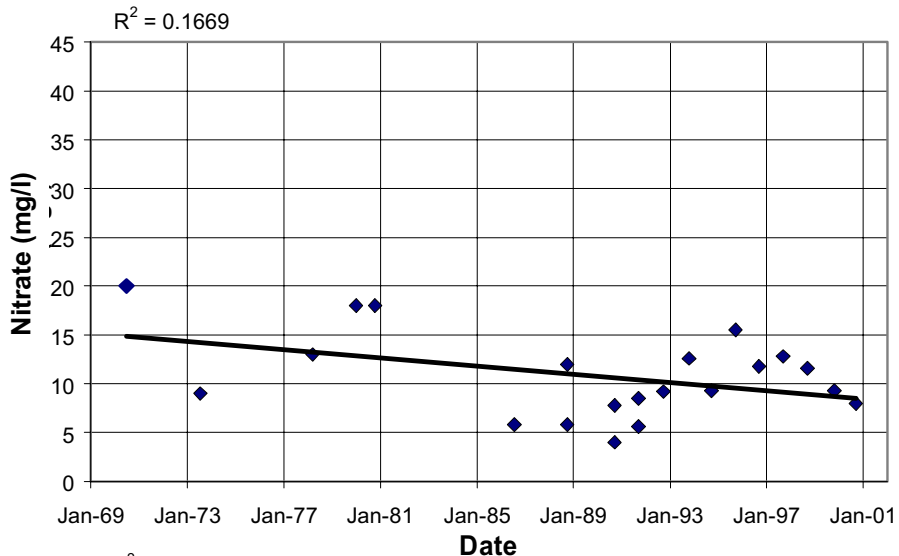
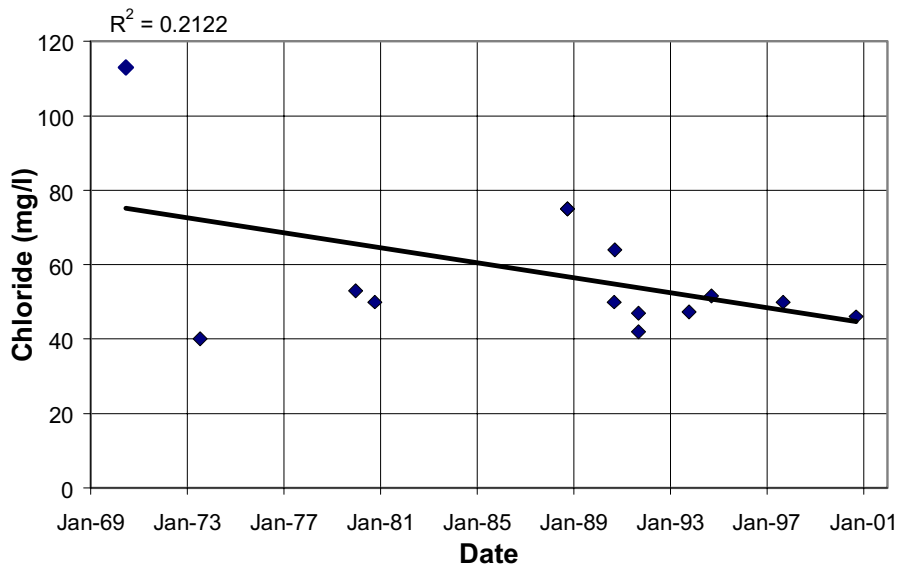


NOTE: The calculated trendlines are shown, but they may not be real trends. See text for discussion of trends at this well.

**CHEMICAL
HYDROGRAPHS**
27S/12E-2E01
Estrella Area
Paso Robles Groundwater
Basin Study



27S/12E-9M02, M03

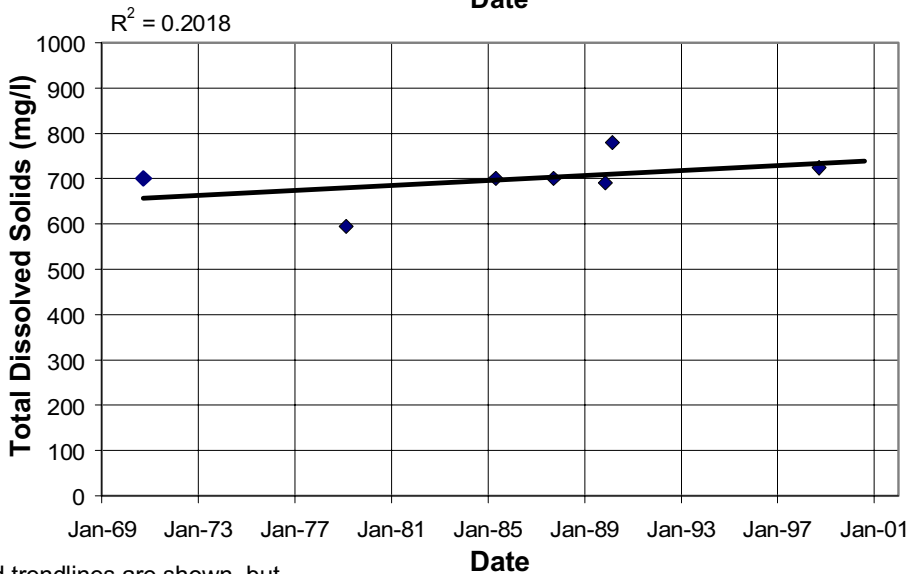
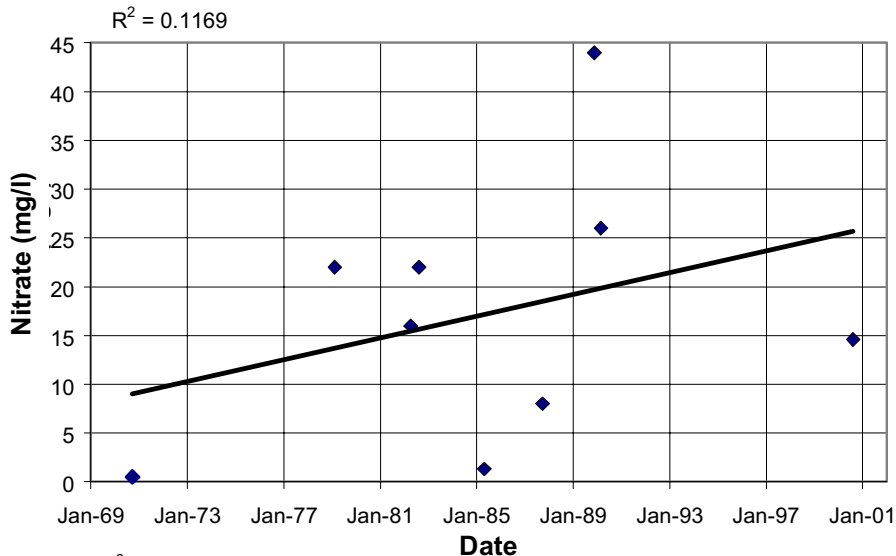
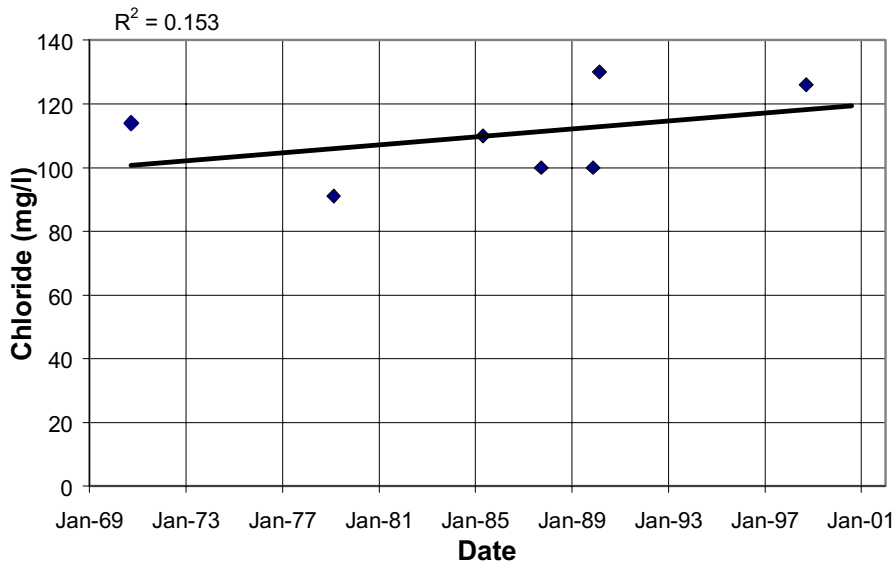


NOTE: The calculated trendlines are shown, but they may not be real trends. See text for discussion of trends at this well.

**CHEMICAL
HYDROGRAPHS**
27S/12E-9M02, M03
Atascadero Area
Paso Robles Groundwater
Basin Study



27S/12E-17R02

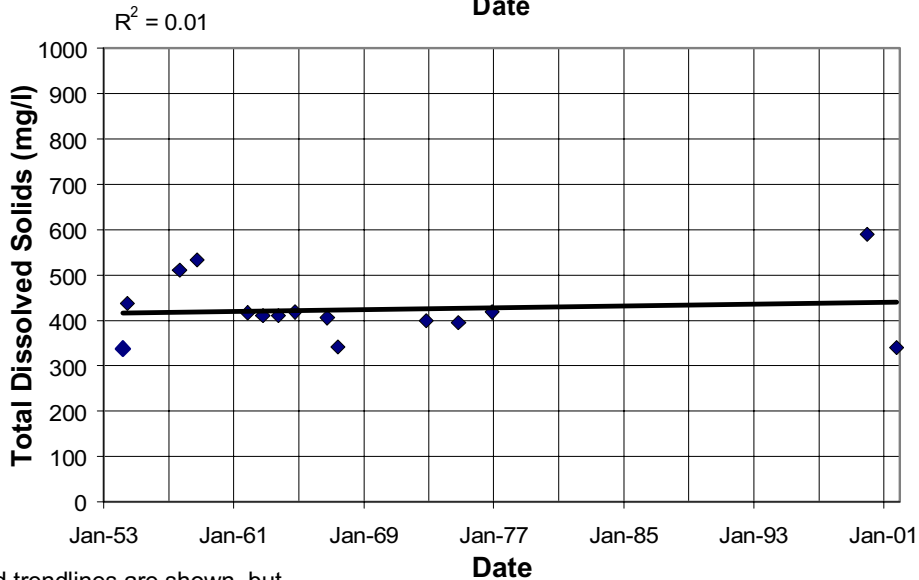
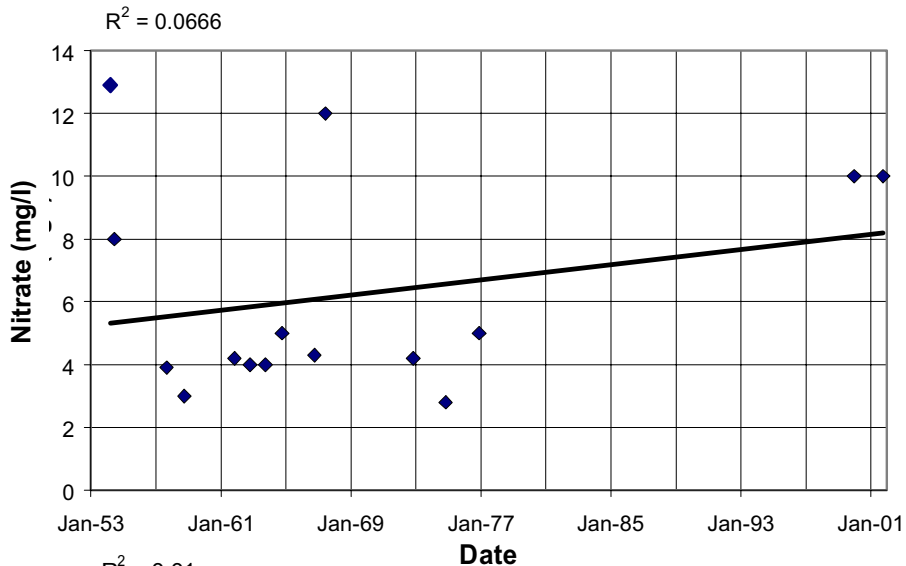
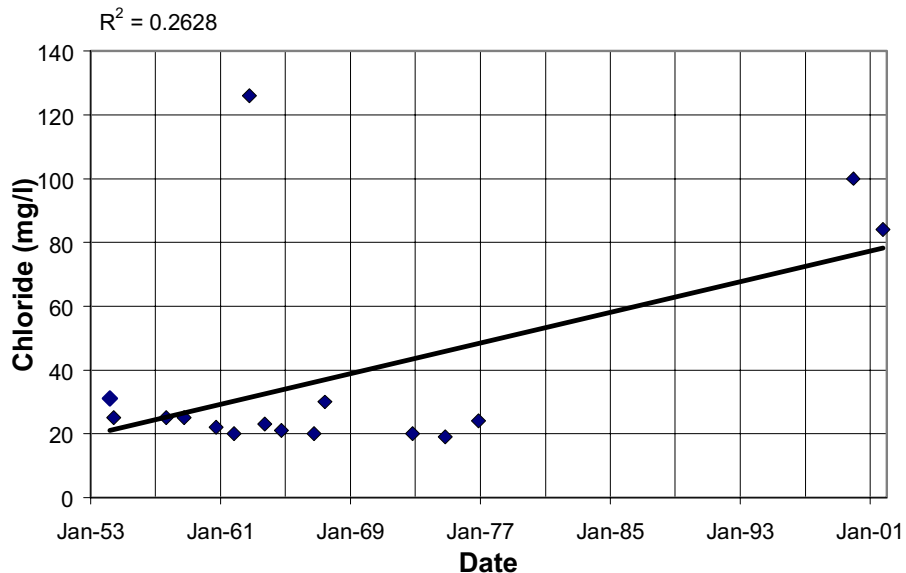


NOTE: The calculated trendlines are shown, but they may not be real trends. See text for discussion of trends at this well.

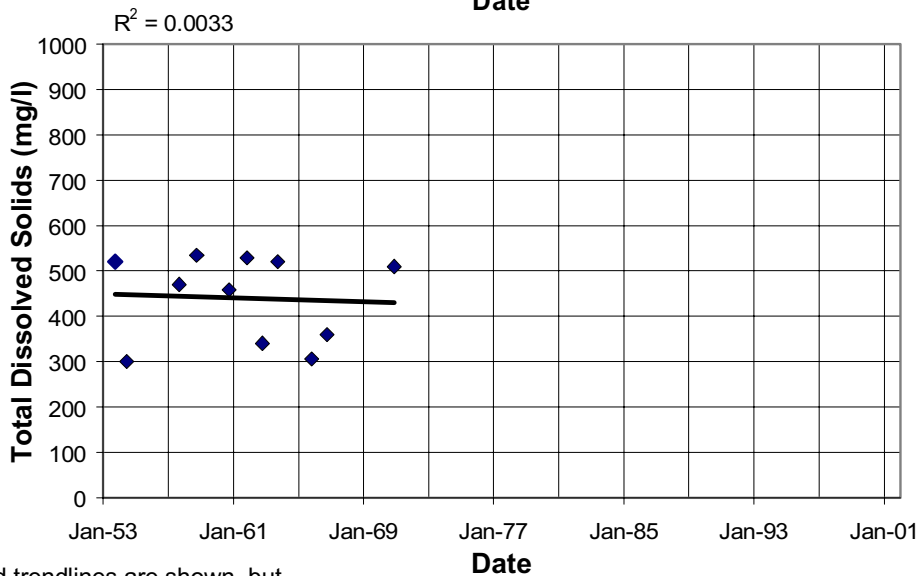
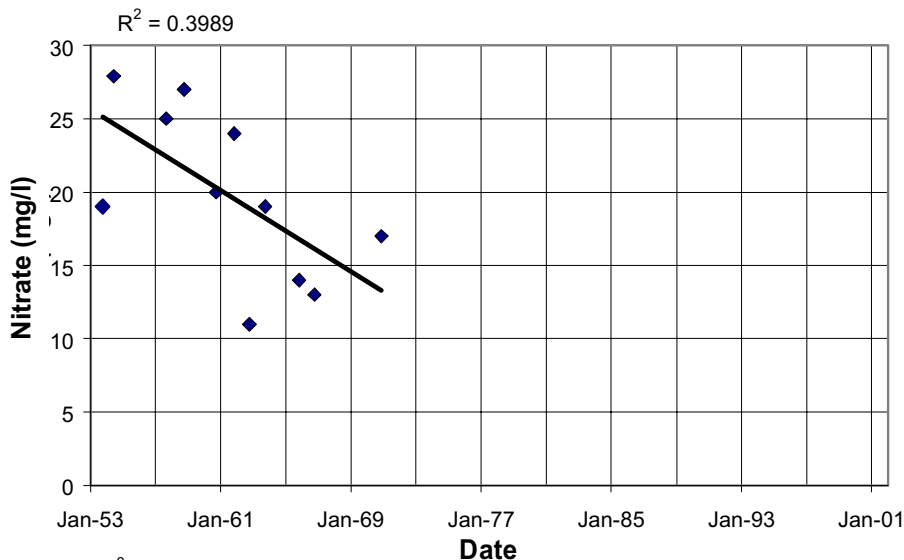
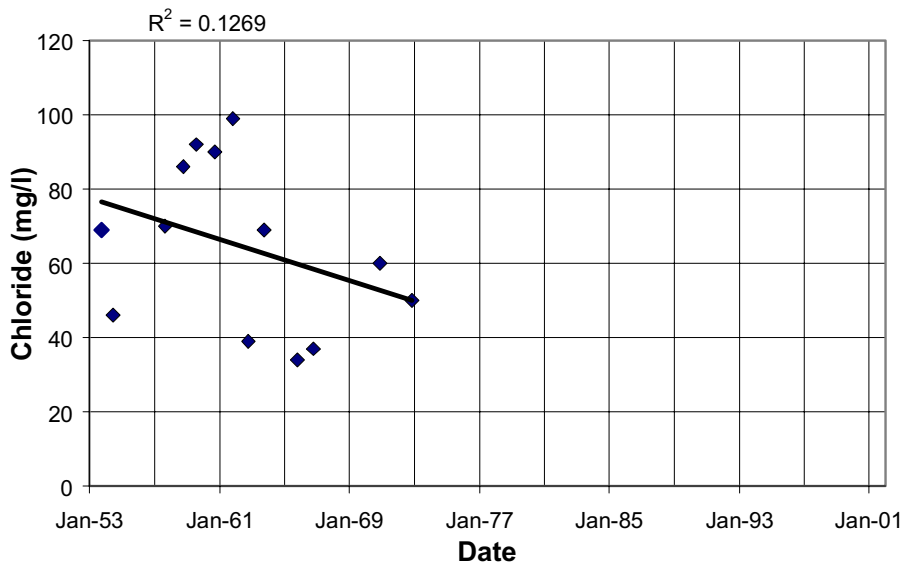
**CHEMICAL
HYDROGRAPHS**
27S/12E-17R02
Atascadero Area
Paso Robles Groundwater
Basin Study



27S/13E-9P01, 20R01, 20A, 5N



27S/13E-36R01

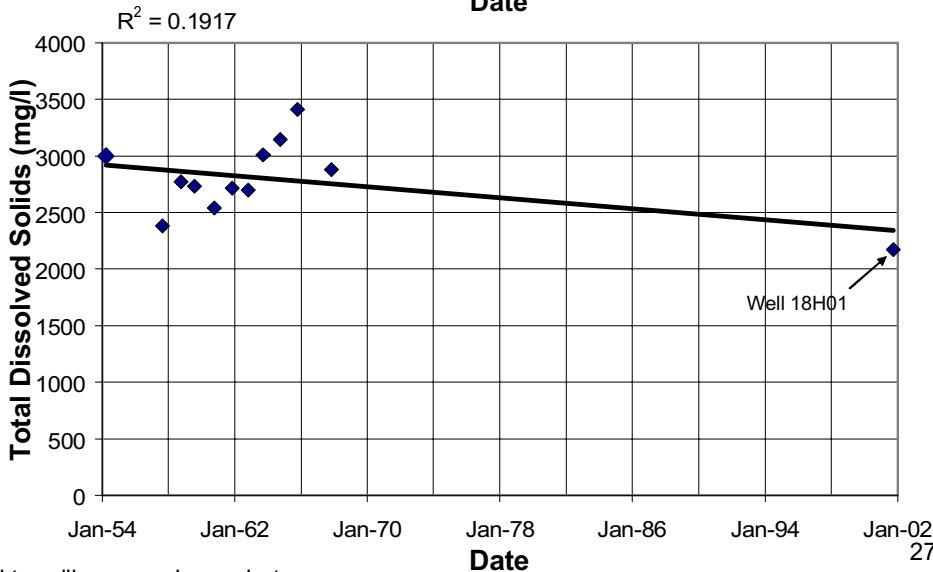
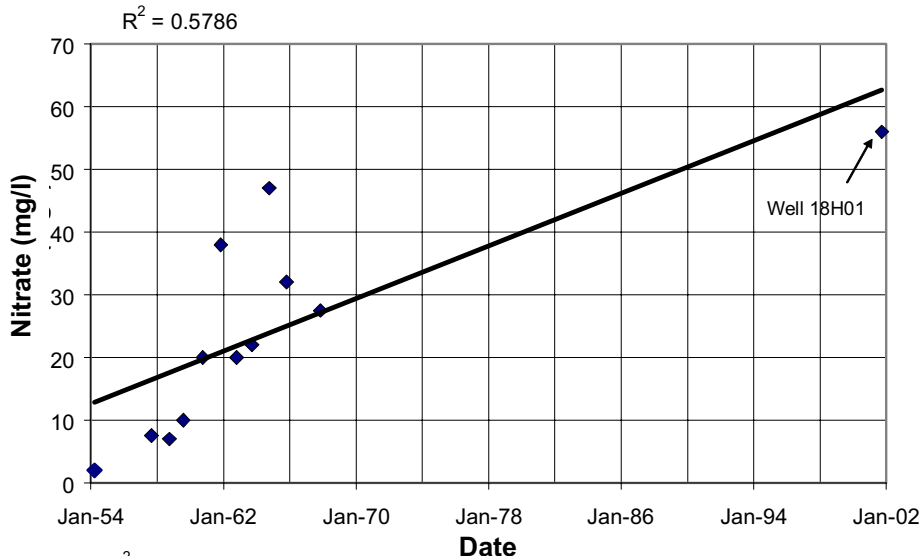
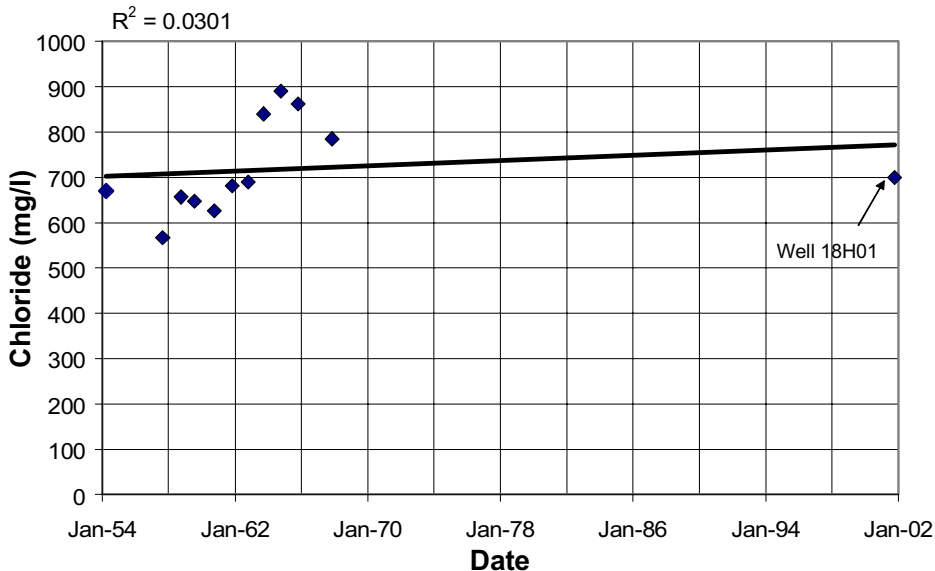


NOTE: The calculated trendlines are shown, but they may not be real trends. See text for discussion of trends at this well.

**CHEMICAL
HYDROGRAPHS**
27S/13E-36R01
Creston Area
Paso Robles Groundwater
Basin Study



27S/15E-13A01, 16E-18H01



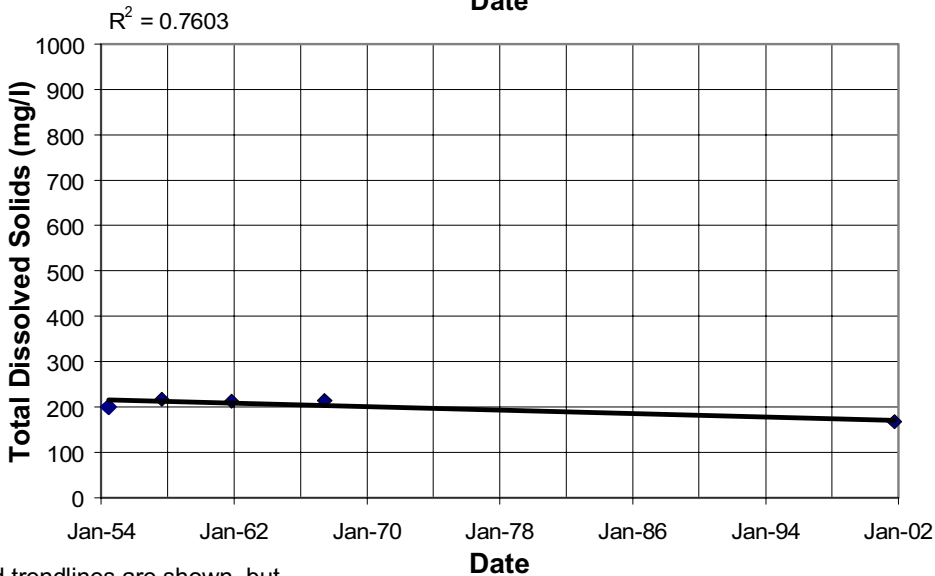
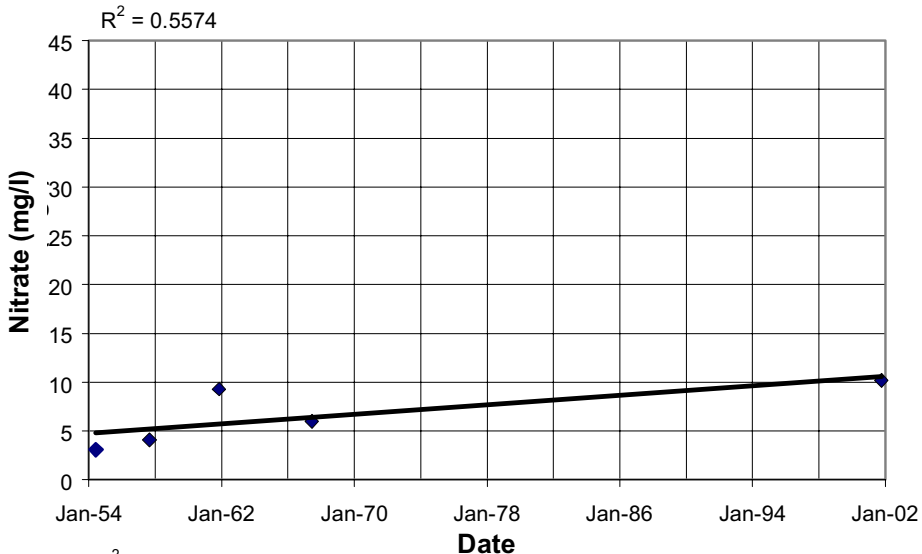
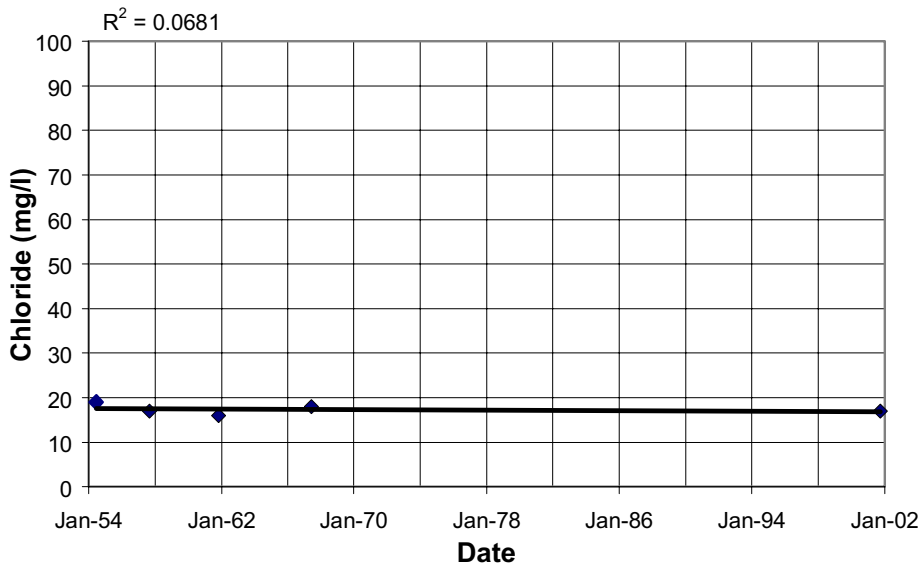
NOTE: The calculated trendlines are shown, but they may not be real trends. See text for discussion of trends at this well.

CHEMICAL HYDROGRAPHS
 27S/15E-13A01, 16E-18H01
 San Juan Area
 Paso Robles Groundwater
 Basin Study





27S/15E-35F01

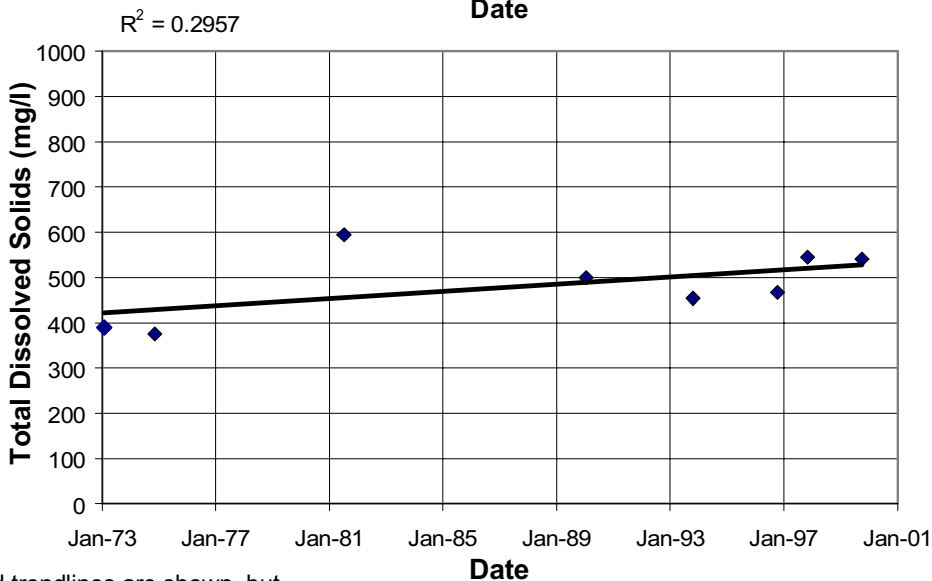
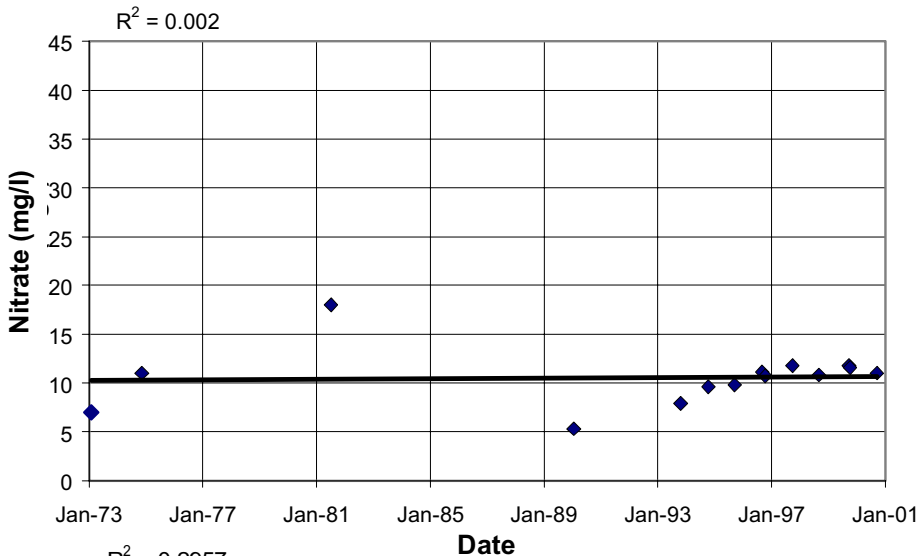
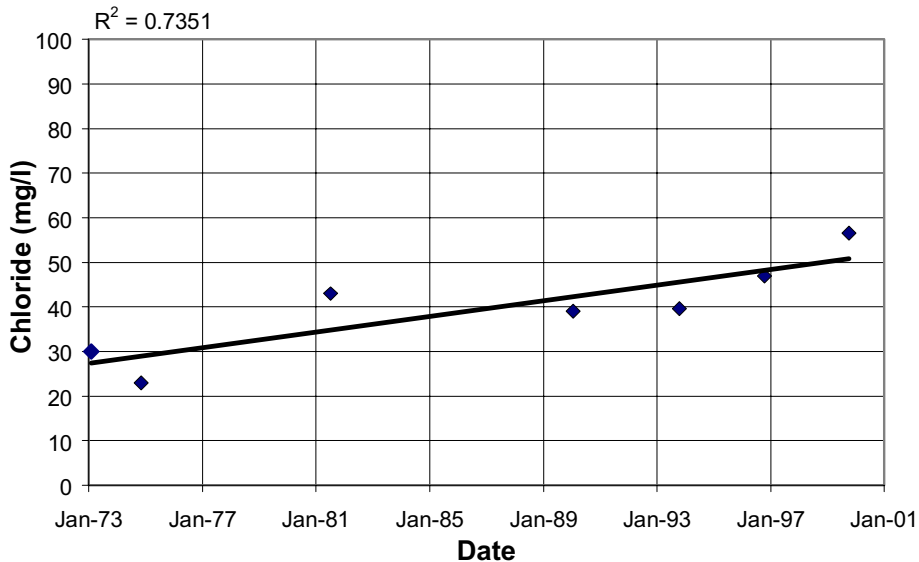


NOTE: The calculated trendlines are shown, but they may not be real trends. See text for discussion of trends at this well.

**CHEMICAL
HYDROGRAPHS**
27S/15E-35F01
San Juan Area
Paso Robles Groundwater
Basin Study



28S/12E-10A03

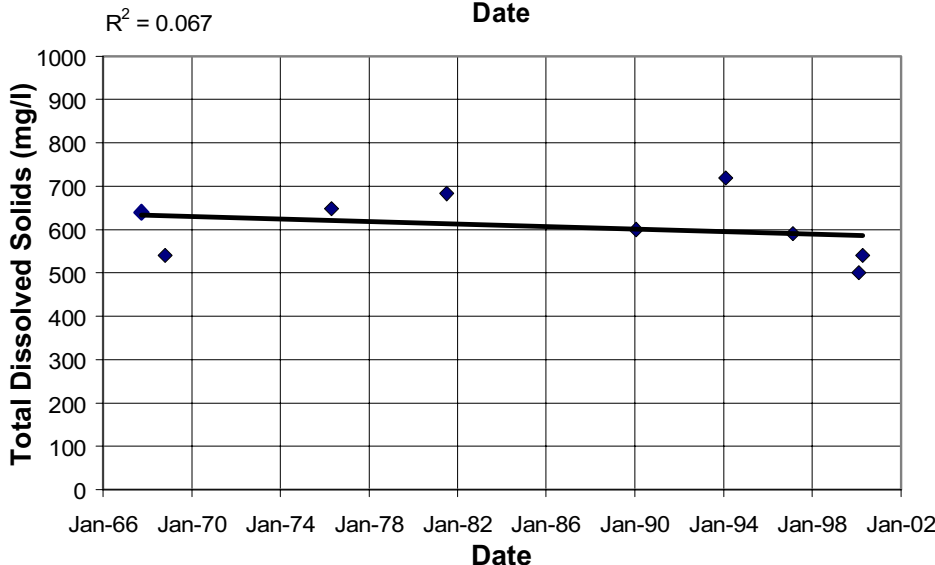
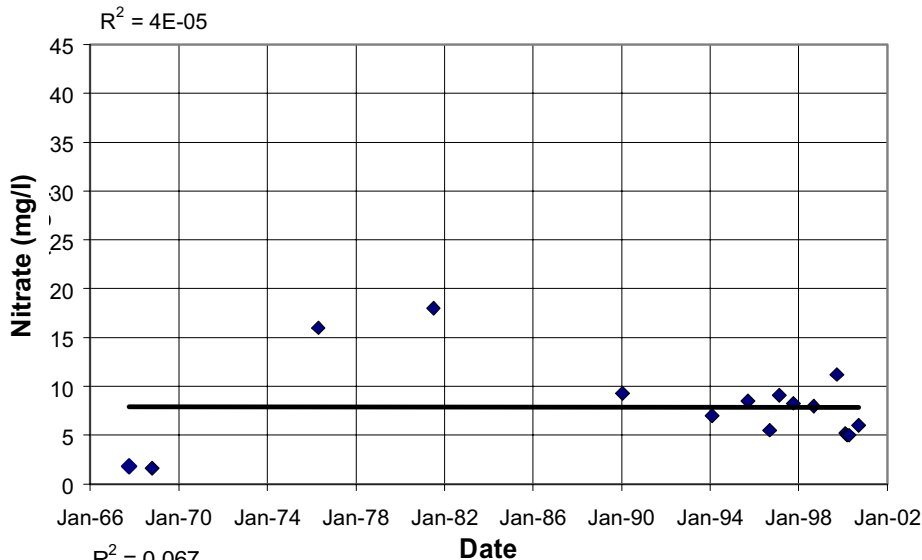
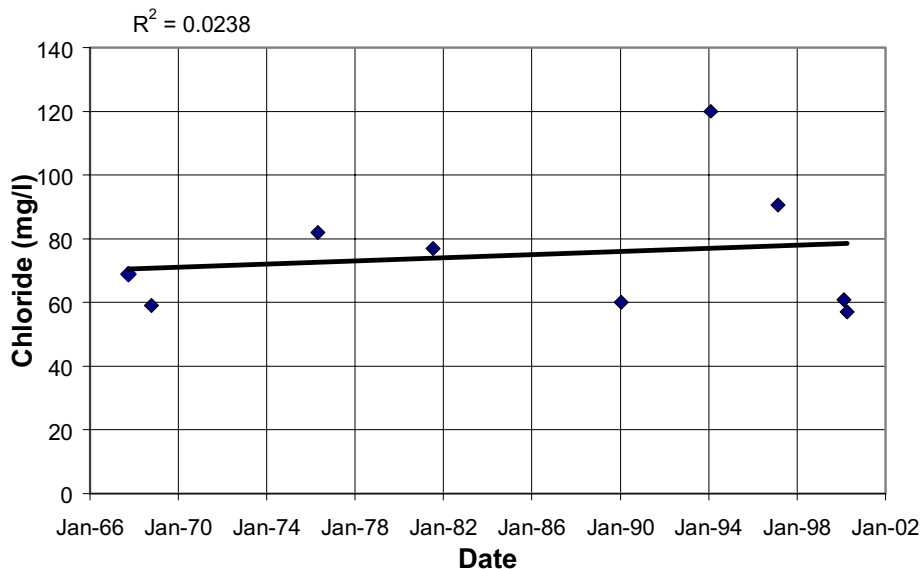


NOTE: The calculated trendlines are shown, but they may not be real trends. See text for discussion of trends at this well.

**CHEMICAL
HYDROGRAPHS**
28S/12E-10A03
Atascadero Area
Paso Robles Groundwater
Basin Study



28S/12E-11N06, N07

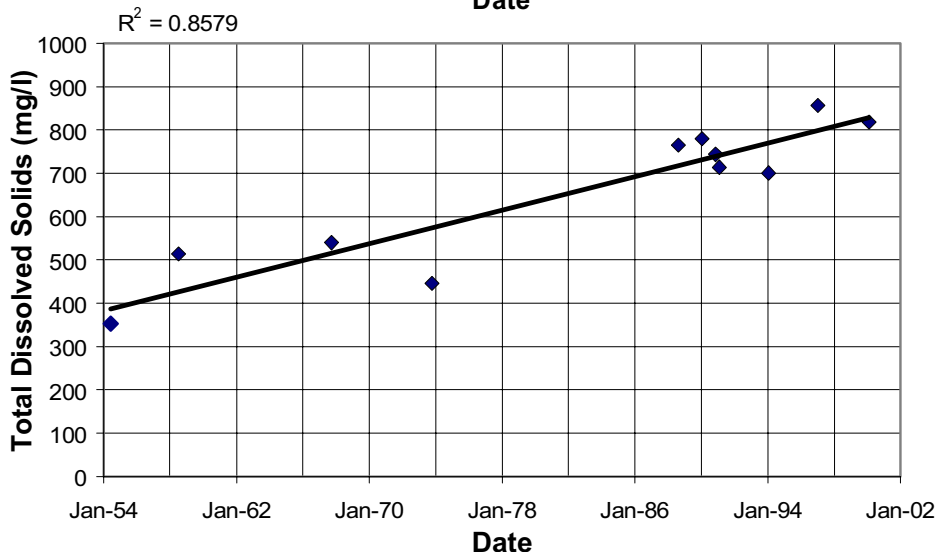
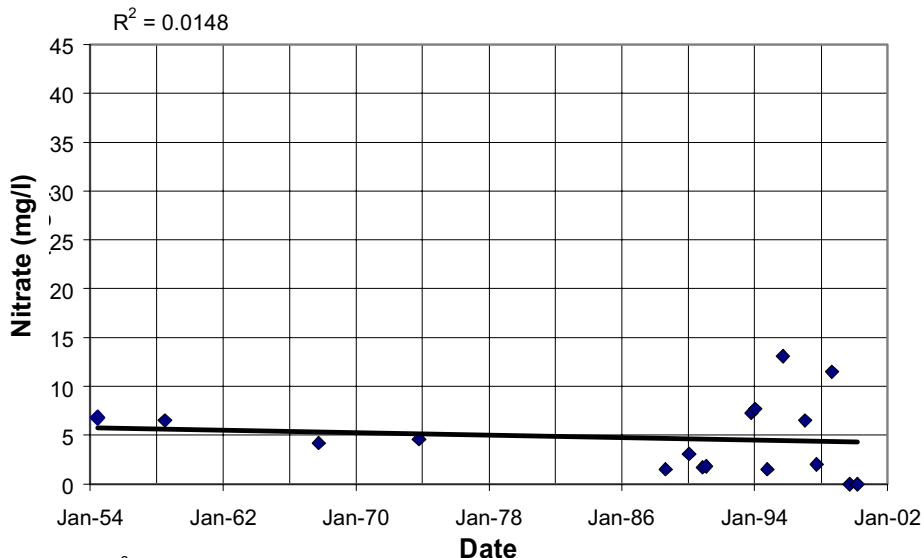
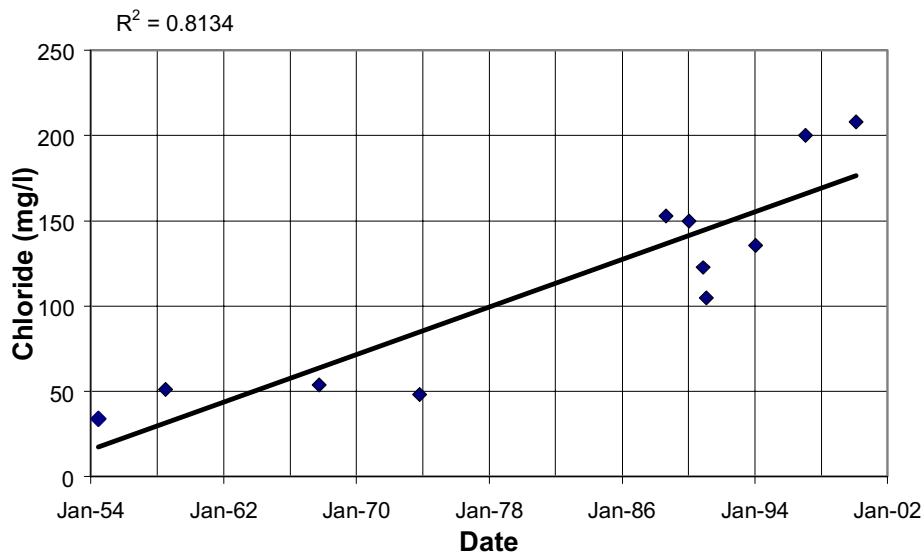


NOTE: The calculated trendlines are shown, but they may not be real trends. See text for discussion of trends at this well.

**CHEMICAL
HYDROGRAPHS**
28S/12E-11N06, N07
Atascadero Area
Paso Robles Groundwater
Basin Study



28S/12E-14K01

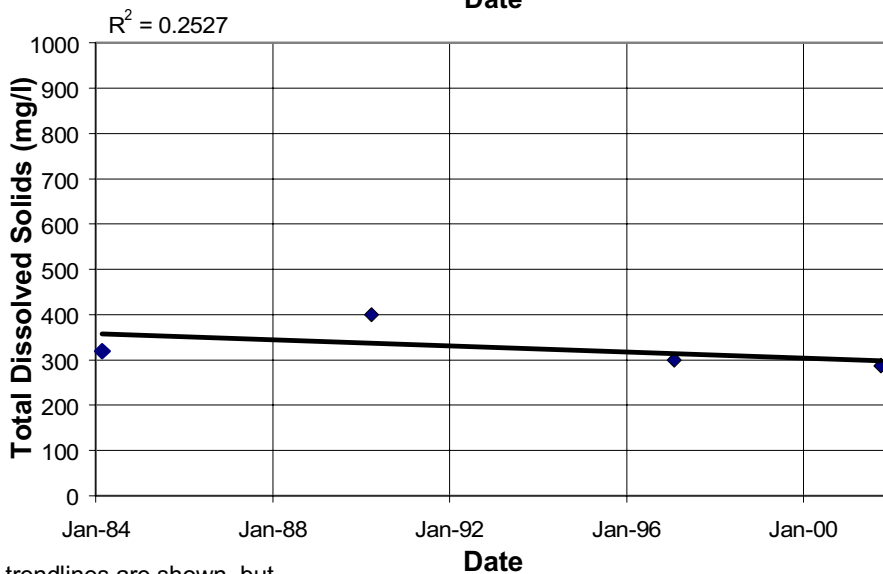
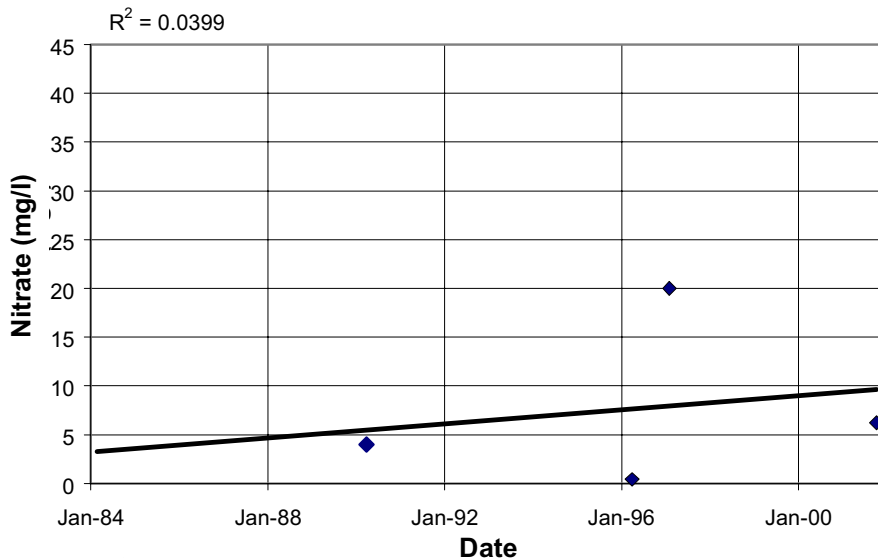
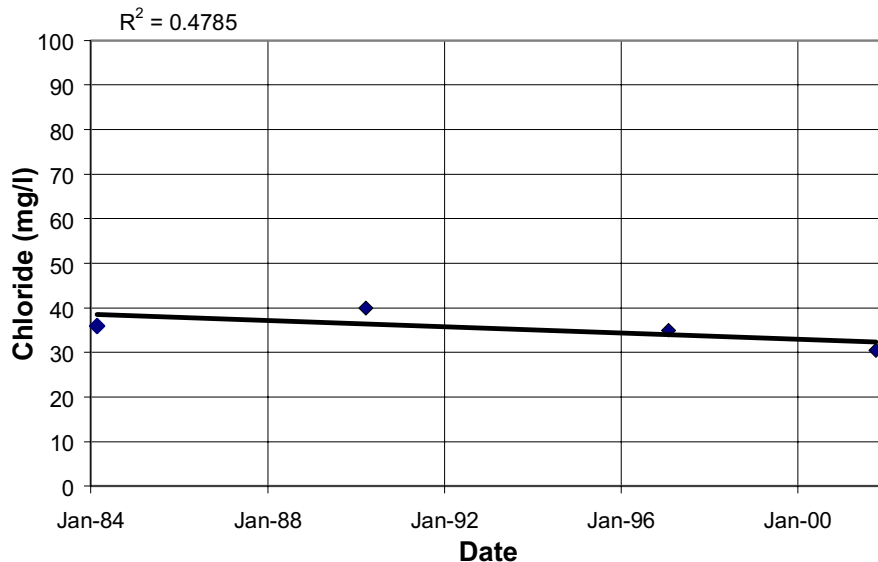


NOTE: The calculated trendlines are shown, but they may not be real trends. See text for discussion of trends at this well.

**CHEMICAL
HYDROGRAPHS**
28S/12E-14K01
Atascadero Area
Paso Robles Groundwater
Basin Study



28S/13E-1K01, K02

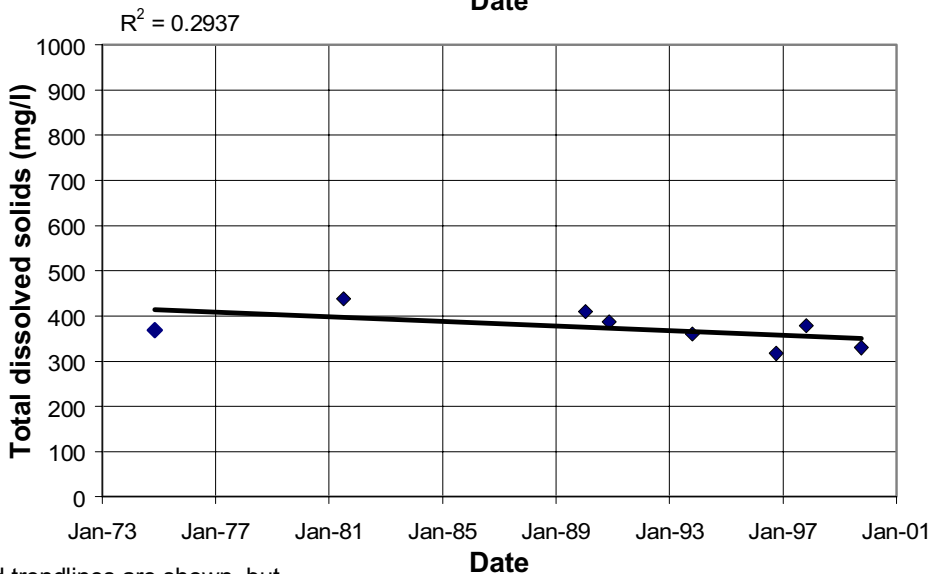
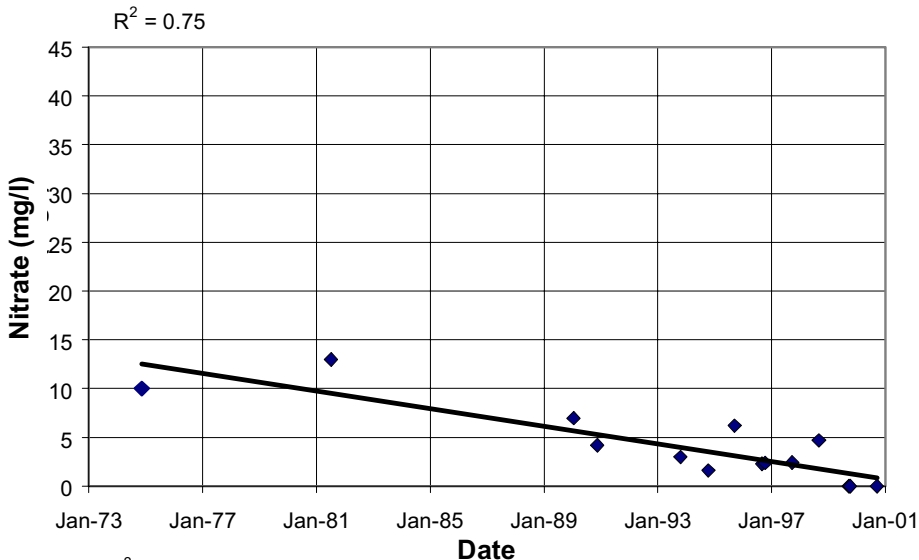
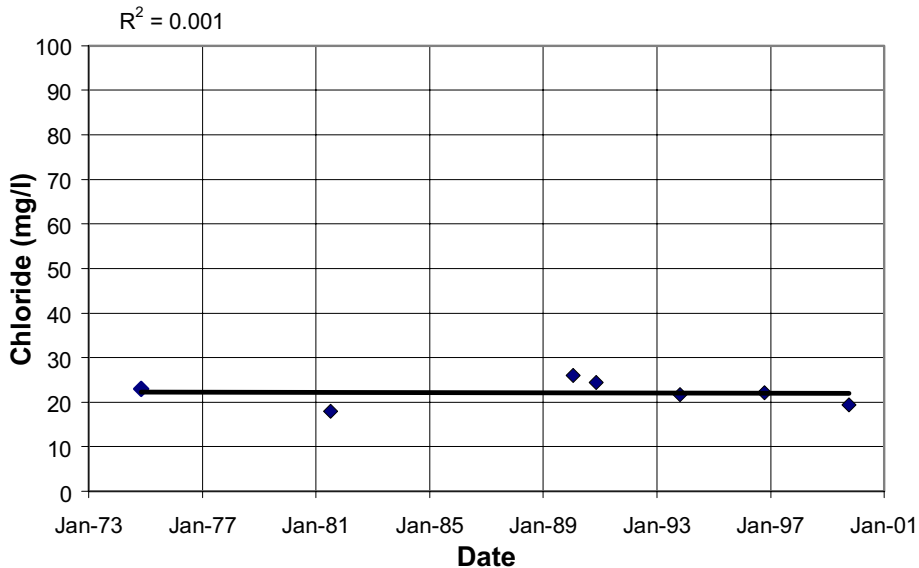


NOTE: The calculated trendlines are shown, but they may not be real trends. See text for discussion of trends at this well.

**CHEMICAL
HYDROGRAPHS**
28S/13E-1K01, K02
Creston Area
Paso Robles Groundwater
Basin Study



28S/13E-31F02

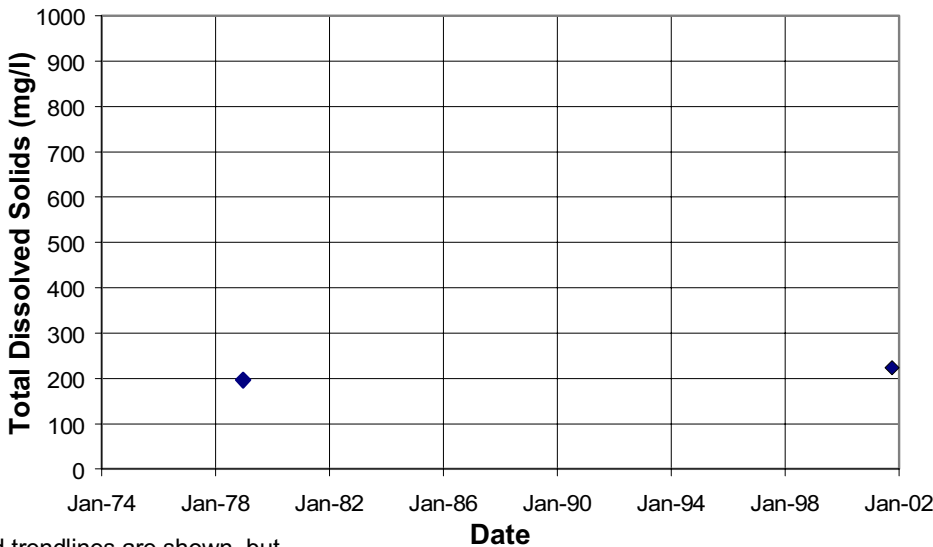
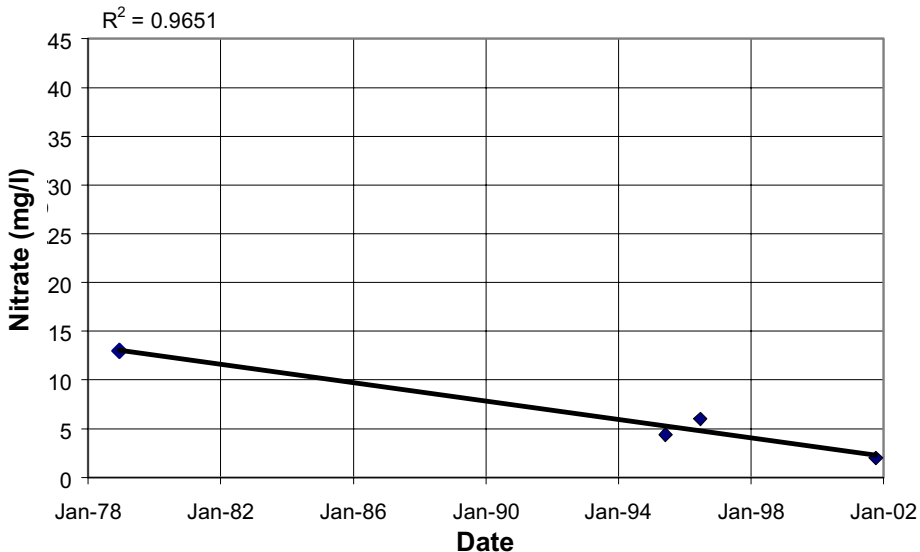
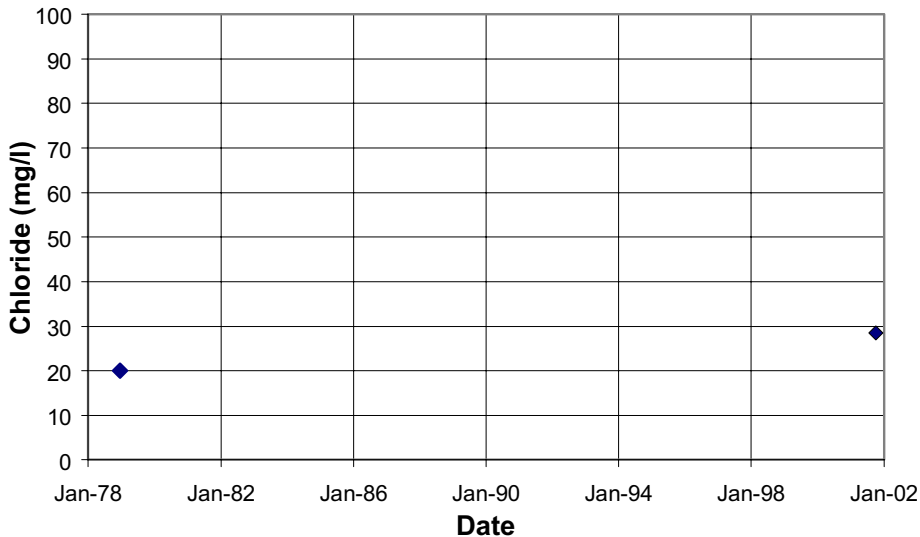


NOTE: The calculated trendlines are shown, but they may not be real trends. See text for discussion of trends at this well.

**CHEMICAL
HYDROGRAPHS**
28S/13E-31F02
Atascadero Area
Paso Robles Groundwater
Basin Study



28S/13E-36A



NOTE: The calculated trendlines are shown, but they may not be real trends. See text for discussion of trends at this well.

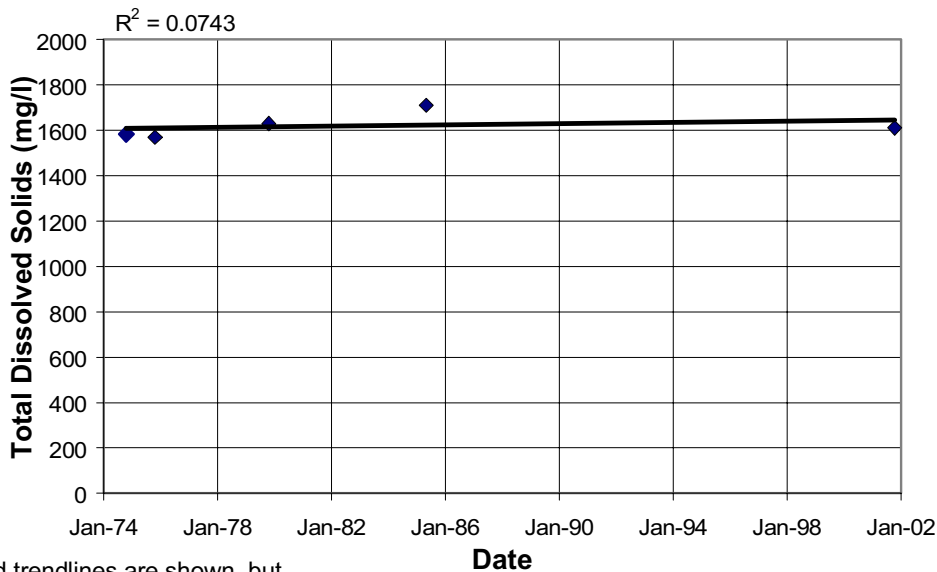
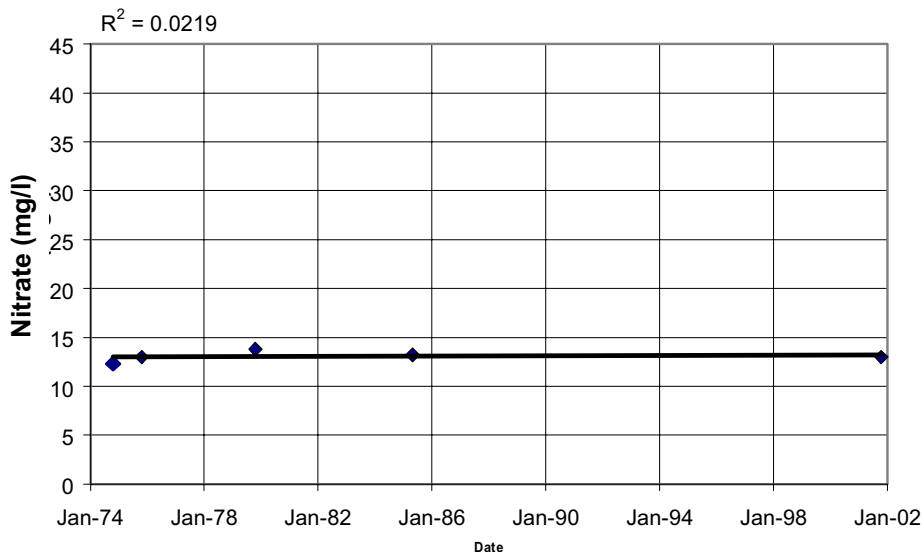
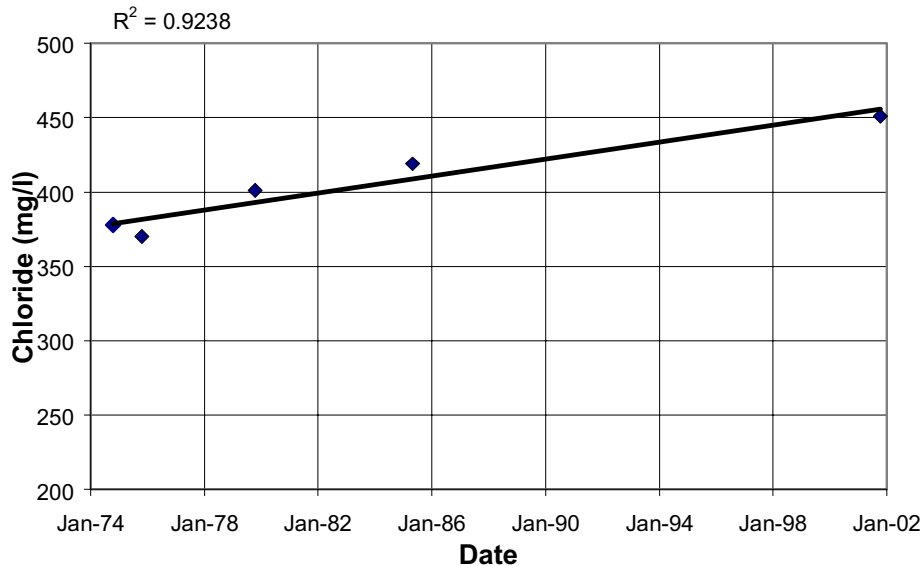
**CHEMICAL
HYDROGRAPHS**
28S/13E-36A
Creston Area
Paso Robles Groundwater
Basin Study

9871\1137\g02.dsf.p13





28S/15E-21G, G02

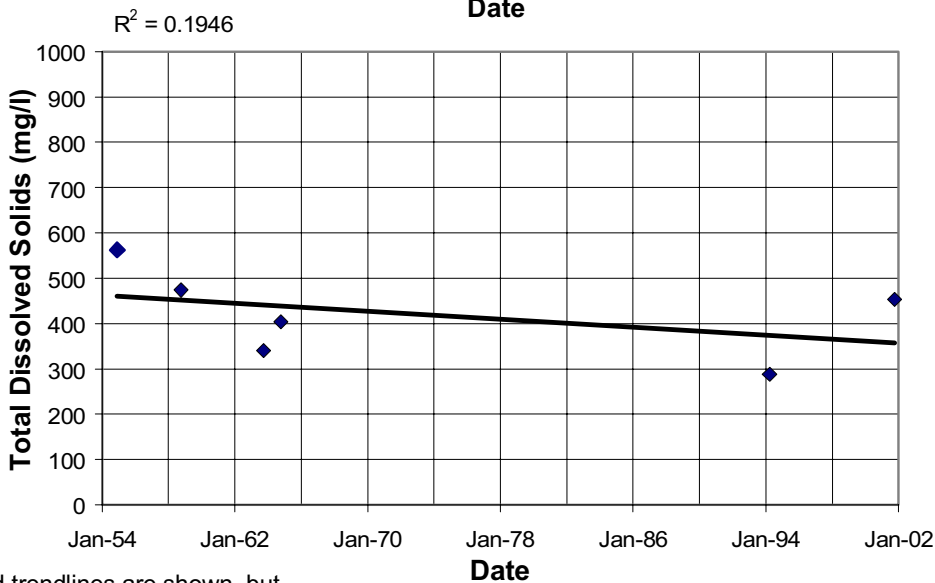
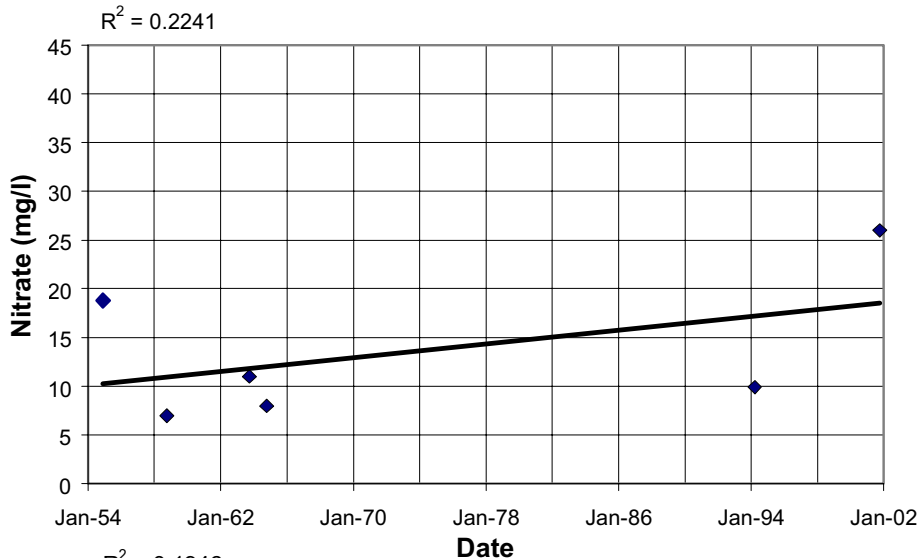
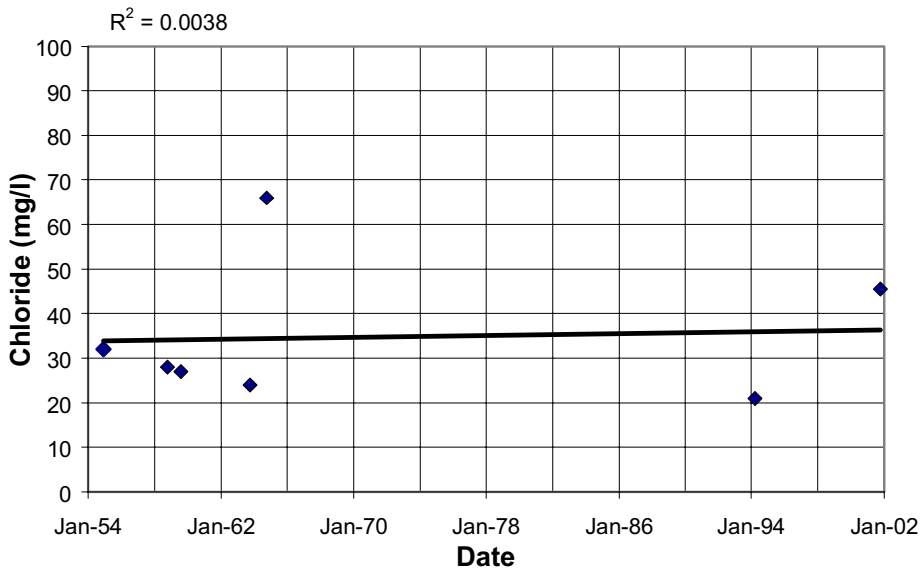


NOTE: The calculated trendlines are shown, but they may not be real trends. See text for discussion of trends at this well.

**CHEMICAL
HYDROGRAPHS**
28S/15E-21G, G02
Shandon Area
Paso Robles Groundwater
Basin Study



28S/16E-14N01



NOTE: The calculated trendlines are shown, but they may not be real trends. See text for discussion of trends at this well.

**CHEMICAL
HYDROGRAPHS**
28S/16E-14N01
San Juan Area
Paso Robles Groundwater
Basin Study

