

LEGEND

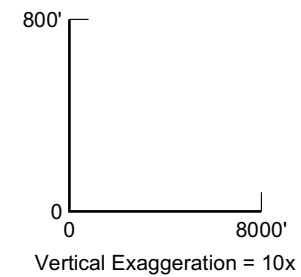
- Qal** Alluvium
- QTp** Paso Robles Formation
- Tp** Pancho Rico Formation
- Tsm** Santa Margarita Formation
- Geologic contact
- ┆ Well
- ←15° Geologic dip data

- ▽10/77 Water level with date noted
- Model layer boundary
- ④ Numerical Model layer number
- Basin included in numerical model
- Area not included in numerical model

GEOLOGIC DESCRIPTION ABBREVIATIONS

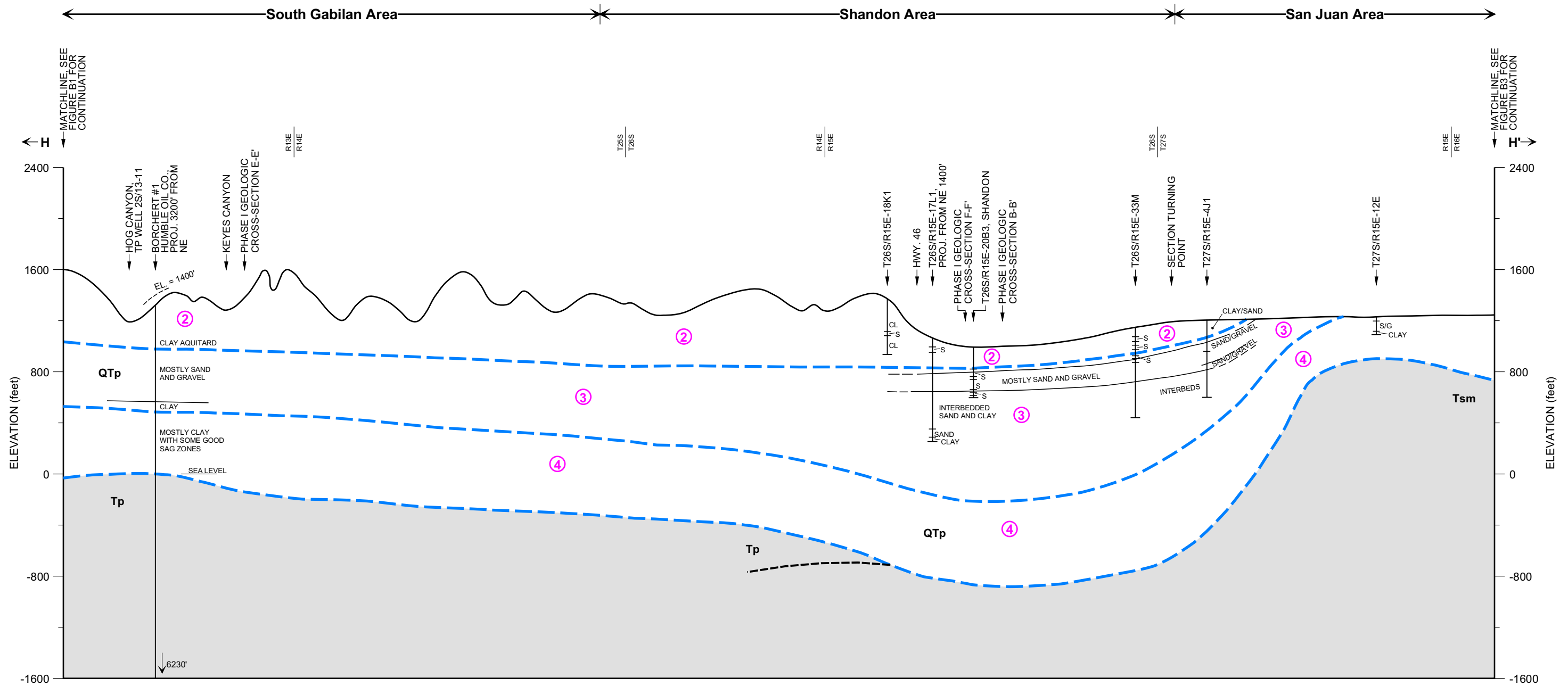
- S - Sand
- CL - Clay
- G - Gravel
- S/G - Sand and Gravel

CROSS-SECTION H-H'



Paso Robles Groundwater Basin Study, Phase II
Fugro West, Inc., Cleath & Associates, and ETIC Engineering

Figure 12A



LEGEND

- Qal** Alluvium
- QTp** Paso Robles Formation
- Tp** Pancho Rico Formation
- Tsm** Santa Margarita Formation

- Geologic contact
- ┆ Well
- ←1.5° Geologic dip data

- ▽10/77 Water level with date noted
- Model layer boundary
- ④ Numerical Model layer number
- Basin included in numerical model
- Area not included in numerical model

GEOLOGIC DESCRIPTION ABBREVIATIONS

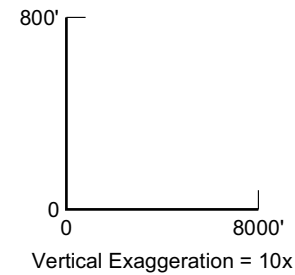
- S - Sand
- CL - Clay
- G - Gravel
- S/G - Sand and Gravel

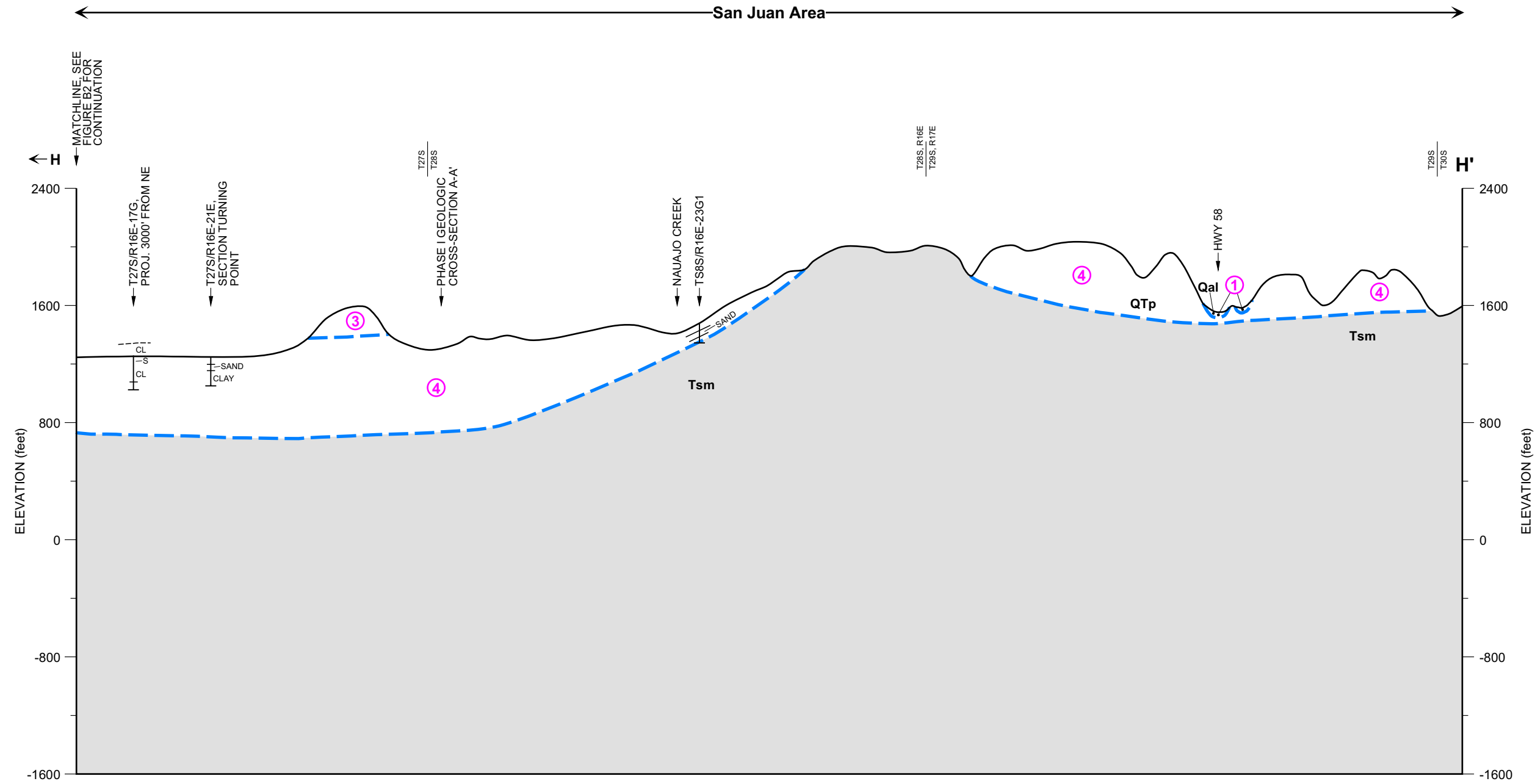
CROSS-SECTION H-H'
(Continued)

Paso Robles Groundwater Basin Study, Phase II

Fugro West, Inc., Cleath & Associates,
and ETIC Engineering

Figure 12B





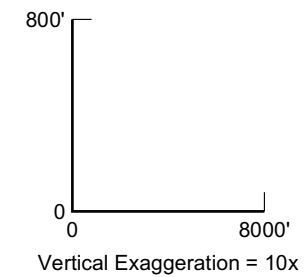
LEGEND

- Qal** Alluvium
- QTp** Paso Robles Formation
- Tp** Pancho Rico Formation
- Tsm** Santa Margarita Formation
- Geologic contact
- ┆ Well
- ←15° Geologic dip data

- ▽10/77 Water level with date noted
- Model layer boundary
- ④ Numerical Model layer number
- Basin included in numerical model
- Area not included in numerical model

GEOLOGIC DESCRIPTION ABBREVIATIONS

- S - Sand
- CL - Clay
- G - Gravel
- S/G - Sand and Gravel



CROSS-SECTION H-H'
(Continued)

Paso Robles Groundwater Basin Study, Phase II
Fugro West, Inc., Cleath & Associates,
and ETIC Engineering

Figure 12C