



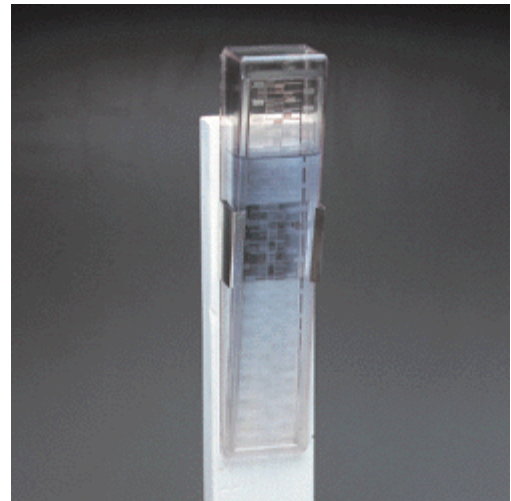
Volunteer Precipitation Gauge Station Set-Up

SAN LUIS OBISPO COUNTY
DEPARTMENT OF PUBLIC WORKS

County Government Center, Room 207 • San Luis Obispo CA 93408 • (805) 781-5252

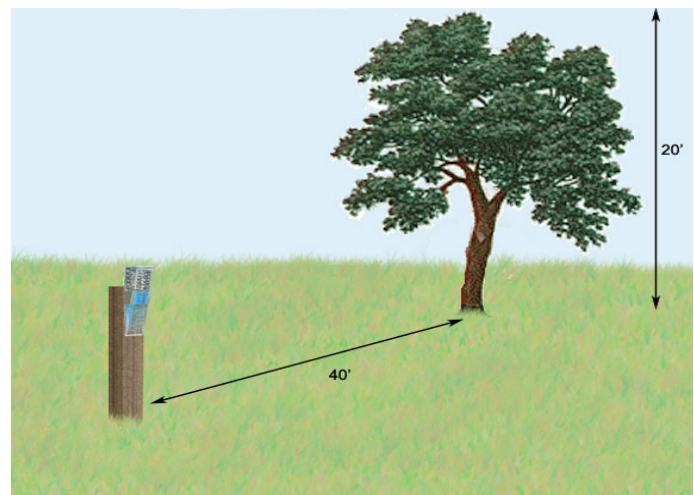
Tru-Chek Rain Gauge

The precipitation gauge to be used for the volunteer stations is the Tru-Chek Rain Gauge. The gauge is made of heavy weather resistant plastic and is in the shape of a wedge. The wedge shape of the gauge allows the scale to be graduated so that it is easier to read low precipitation levels. The gauge can be read in either inches or millimeters, although the county keeps precipitation records in inches. The Tru-Chek gauge can hold up to 6 inches or 150 millimeters of rain. The tick marks on the inches side of the gauge are hundredths of an inch. Since the scale is graduated, tick marks between two written values may represent a different amount than one between two other written values. For example, each of the four smaller tick marks between the two written values of 0.05 inches and 0.10 inches represents 0.01 inches or one one-hundredth of an inch. Compare these values to tick marks between 1.75 inches and 2.0 inches, each of these four tick marks must be 0.05 inches or five one-hundredths of an inch. The gauge also has an aluminum mounting bracket which can be attached to a post. The plastic gauge can then be placed in the bracket and can be easily removed for dumping out rain water or for cleaning.



Setting up Your Rain Gauge

The ideal location for your rain gauge is mounted on a post in an open area. The mounted gauge should be about twice as far away from any obstructions as the height or surrounding buildings or trees. For example, if there are a row of 20 foot tall trees near the area you'd like to place your gauge, it must be at least 40 feet away from the trees. The gauge should be mounted with the aluminum bracket provided about eye level on the post for easy reading.



Reading and Recording

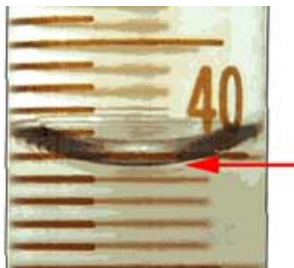
Read your precipitation gauge everyday at the same time. After you read the gauge it is recommended that you empty the gauge. If you do not wish to empty the gauge, or forget to, then the next reading should be what is read minus the previous days reading. Always read from the bottom of the water meniscus, or the lowest point of the water surface.

If you know it has rained, but see less than 0.01 inches of rain, record a trace of rain by writing "T" in for that date. This indicates that rain has fallen, but not enough to be recorded.

You may also notice once in a while that there is some small amount of water in the gauge, but know that it has not rained. This water could be dew and should be recorded as "0.0" for that date. Dew is not to be recorded as rainfall.



If you miss one reading please only a record "0.0" if the gauge was empty when you take the next reading. If you leave for several days be sure to make a note of the days you missed readings. If there is rain water in the gauge when you return, record the amount as a multiple day accumulation of rainfall. The days in which the accumulation occurred and the amount of precipitation should be clearly noted by the recorder.



Water Meniscus



A "trace" of Rain

Cleaning

After the gauge has been in use for several months, dust and dirt can accumulate which can make readings more difficult and inaccurate. Tru-Check recommends cleaning the gauge by pouring $\frac{1}{4}$ cup of water mixed with $\frac{1}{4}$ cup of liquid bleach in the gauge and letting it soak for 10-15 minutes.

Submitting Yearly Precipitation Form

Before the current water year ends you should be contacted by the Hydrological Data Technician requesting your rainfall measurements for the ending water year. A new annual precipitation form will also be sent to you, but you can also access a printable version on our website at www.slocountywater.org. Please also let us know if you have daily internet access and would be interesting in entering your daily rainfall data online.

As a volunteer you are helping collect historical rainfall data which will be used in planning and storm analysis. In addition, the data will also be available as public information. Thank you for offering your time and effort, it is greatly appreciated.

San Luis Obispo County Public Works
DAILY PRECIPITATION
(Inches)

Station Name and no. _____
Observation Time _____ Water Year _____

Day	JUL	AUG	SEP	OCT	NOV	DEC	JAN	FEB	MAR	APR	MAY	JUN	Day
1													1
2													2
3													3
4													4
5													5
6													6
7													7
8													8
9													9
10													10
11													11
12													12
13													13
14													14
15													15
16													16
17													17
18													18
19													19
20													20
21													21
22													22
23													23
24													24
25													25
26													26
27													27
28													28
29													29
30													30
31													31
Total													
Cum. Total													

Please write any remarks on the reverse side -> Season Total _____