

# Paso Robles Groundwater Basin Resource Capacity Study

---

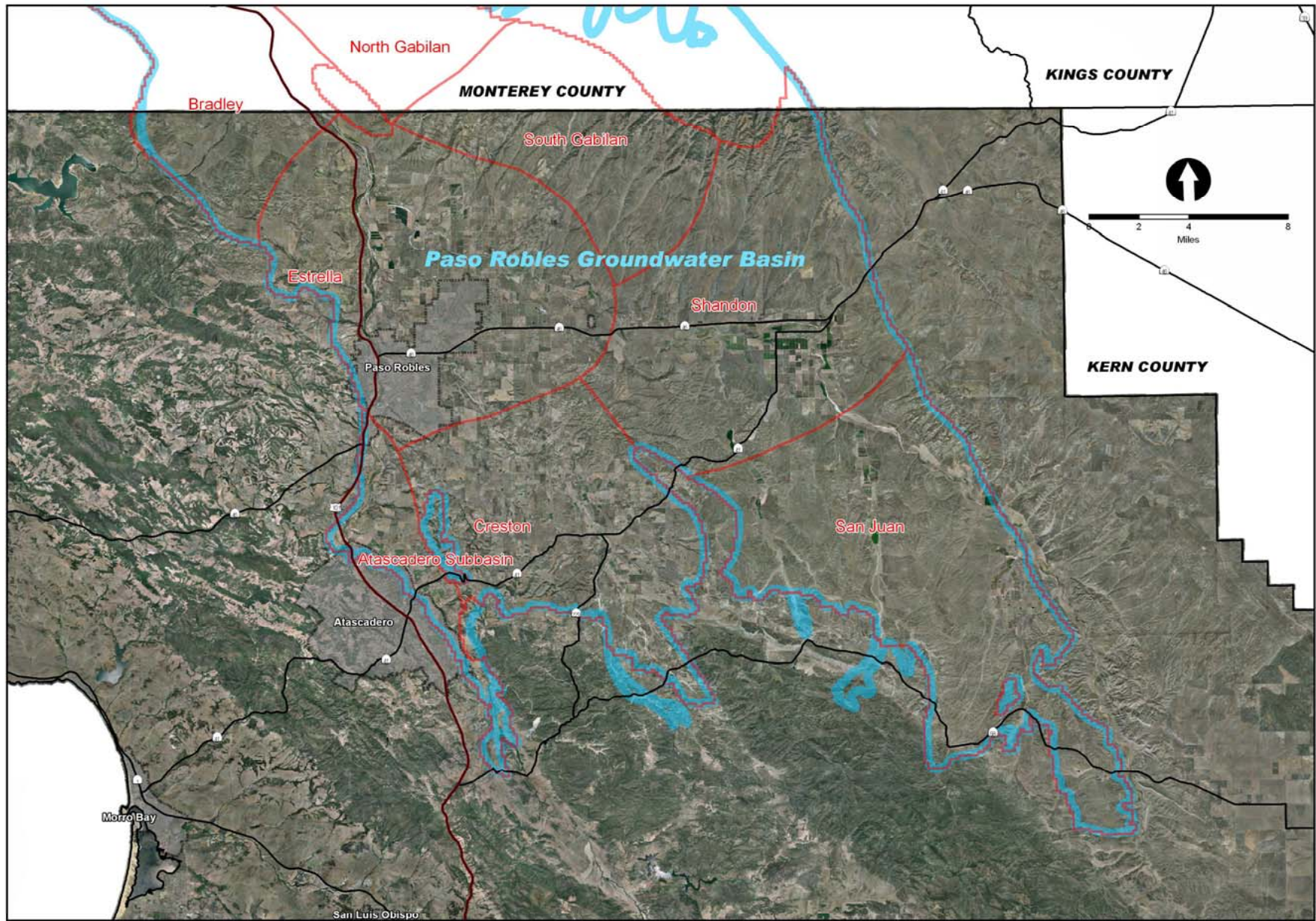
## North County Water Forum

June 4, 2009

---

NCWF  
June 4, 2009





# PRGWB

## Resource Capacity Study

---

- **Part of the Resource Management System**
- **Board directed preparation in January 2007**
- **Establishes Level of Severity**
- **Action Recommendations**

---

NCWF  
June 4, 2009



# PRGWB

## Resource Capacity Study

---

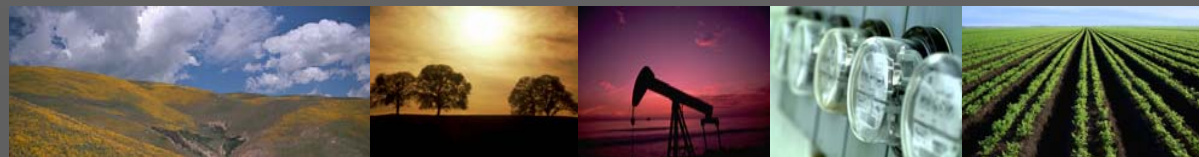
- Phase 1 completed in 2008
- Additional data needed
- Todd Engineers Pumping Evaluation
- 2006 pumping data

---

NCWF  
June 4, 2009



Level I	Resource Capacity Problem – Projected consumption estimated to exceed dependable supply within 9 years
Level II	Diminishing Resource Capacity – Seven year time to develop supplementary water for delivery to users.
Level III	Resource Capacity Met or Exceeded – Resource is being used at or beyond its estimated dependable supply or will deplete dependable supply before new supplies are developed.



### Table 1

## Total Groundwater Pumping by User (1997, 2000, 2006) (afy)

<b>Groundwater User</b>	<b>1997</b>	<b>2000</b>	<b>2006</b>
Net Agriculture	49,683 afy	56,551 afy	58,680 afy
Urban	13,513	14,629	15,665
Rural	9,400	9,993	10,891
Small Community	---	----	594
Small Commercial	1,465	1,465	2,323
<b>Total</b>	<b>74,061</b>	<b>82,638</b>	<b>88,154</b>

NCWF  
June 4, 2009



# PRGWB

## Resource Capacity Study

---

### Constraints and Uncertainties

- Groundwater Law
- Limited jurisdiction/authority
- Data limitations (pumping/data points)
- Water use estimates
- Rainfall

---

NCWF  
June 4, 2009



# PRGWB

## Resource Capacity Study

---

### Conclusions

- Groundwater levels continue to drop in portions of the basin
- Water use leveling out
- Perennial yield
- Conservation

---

NCWF  
June 4, 2009



# Resource Capacity Study

---

## Level Of Severity Conclusions

- Basin – *LOS I*
- Atascadero sub basin- *LOS III*
- Area of Concern – *LOS None*

---

NCWF  
June 4, 2009



# PRGWB

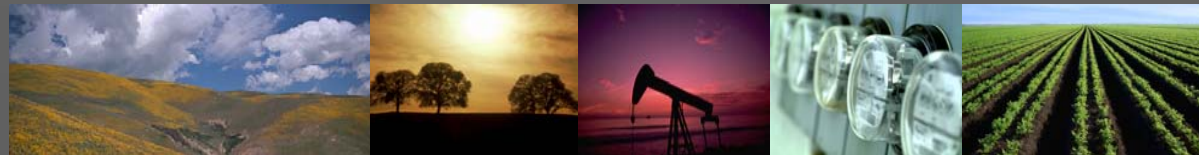
## Resource Capacity Study

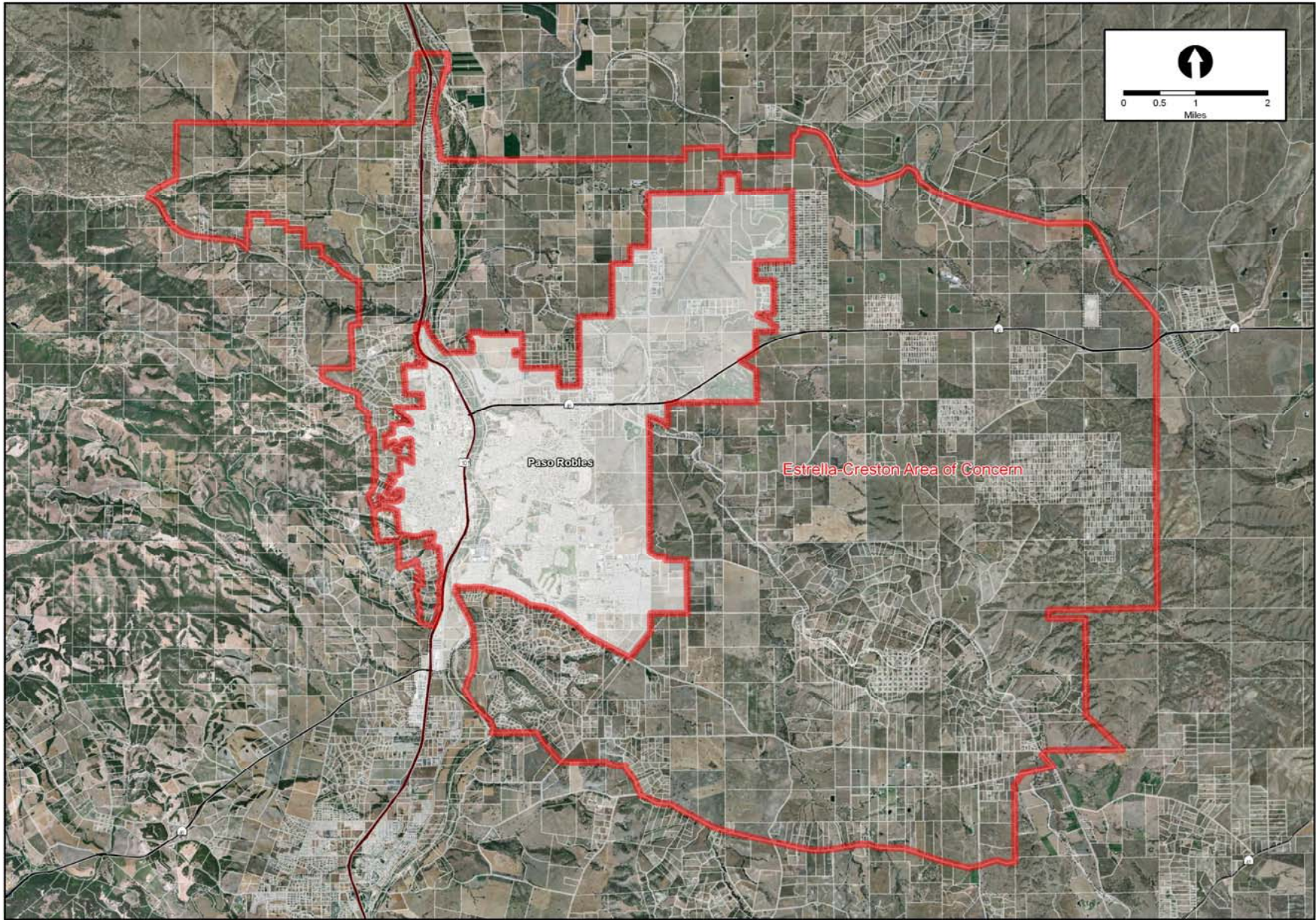
---

### Recommendations

- Groundwater Management Plan
  - Agricultural Conservation
  - New Development (offset water use)
  - Municipal Conservation
  - Future Pumping updates
- 

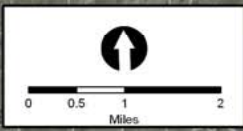
NCWF  
June 4, 2009





Paso Robles

Estrella-Creston Area of Concern



# Resource Capacity Study

---

## Schedule

Planning Commission – June 11, 2009

Board of Supervisors – July 14, 2009

Implementation

Other Actions

---

NCWF  
June 4, 2009



# Resource Capacity Study

---

# QUESTIONS???

---

NCWF  
June 4, 2009

