

Oceano Community Drainage and Flooding Issues

San Luis Obispo County

Board of Supervisors

July 19, 2011

Current Efforts

FUNDED?

- | | |
|--|-----|
| 1. Vegetation Thinning in AG Creek Channel | Yes |
| 2. AG Creek Levee Protection | No |
| 3. Sand Bar Management | No |
| 4. Meadow Creek Lagoon Flood Mitigation | No |
| 5. Update Emergency Response Plan | Yes |

Immediate Work Priorities:

Arroyo Grande Creek Levee Protection Alternatives

- Evaluate the increased risk of flooding in the event that Lopez Dam spills and additional storm preparation that may be needed in 2011/12.

Meadow Creek Lagoon Flood Mitigation Alternatives

1. Pursue permits for Sand Bar Management
2. Implement short term measures to mitigate flooding

Target Needs & Results

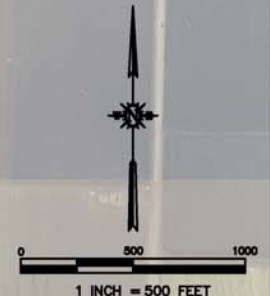
- NEED to evaluate/select/fund/implement
 - AG Creek Levee Protection Alternative
 - Meadow Creek Lagoon Flood Mitigation
- NEED an Emergency Permit for Sand Bar Management

Arroyo Grande Creek Levee Short Term Protection Alternatives



Attachment 1
Arroyo Grande Creek
Levee Protection Alternatives

- SHORT TERM MEASURES**
1. VISQUEEN & SAND BAGS ● 3 OBSERVED LOW CAPACITY LOCATIONS
 2. INTERLOCKING CONCRETE BLOCK MATS ● 3 OBSERVED LOW CAPACITY LOCATIONS
 3. INTERLOCKING CONCRETE BLOCK MATS ALONG SOUTH LEVEE THROUGHOUT LOW CAPACITY SECTION
 4. INTERLOCKING CONCRETE BLOCK MATS ● 3 OBSERVED LOW CAPACITY LOCATIONS, AND LATERAL OVERFLOW ● HYDRAULICALLY FAVORABLE LOCATION
 5. CHANNEL DIVERSION & FLOW CONTROL STRUCTURE



Levee Protection

Protect 3 Identified Low Capacity Sections of South Levee

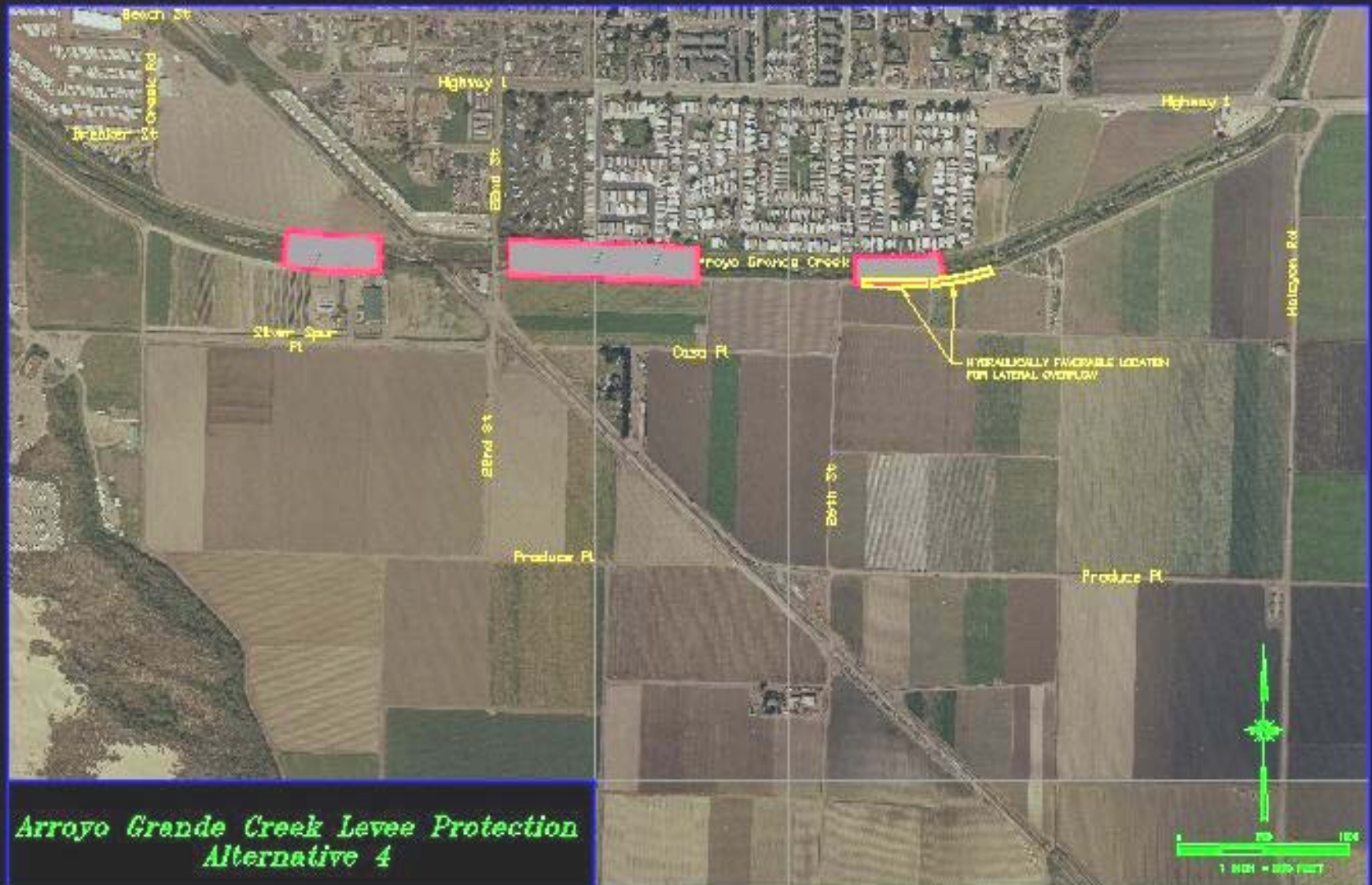


Levee Protection Protect Entire South Levee



Levee Protection

Provide Low Channel Capacity Relief With Upstream Overflow Devices



Levee Protection Channel Diversion & Flow Control Structure



*Arroyo Grande Creek Levee Protection
Alternative 5*

Sand Bar Management

Current Efforts:

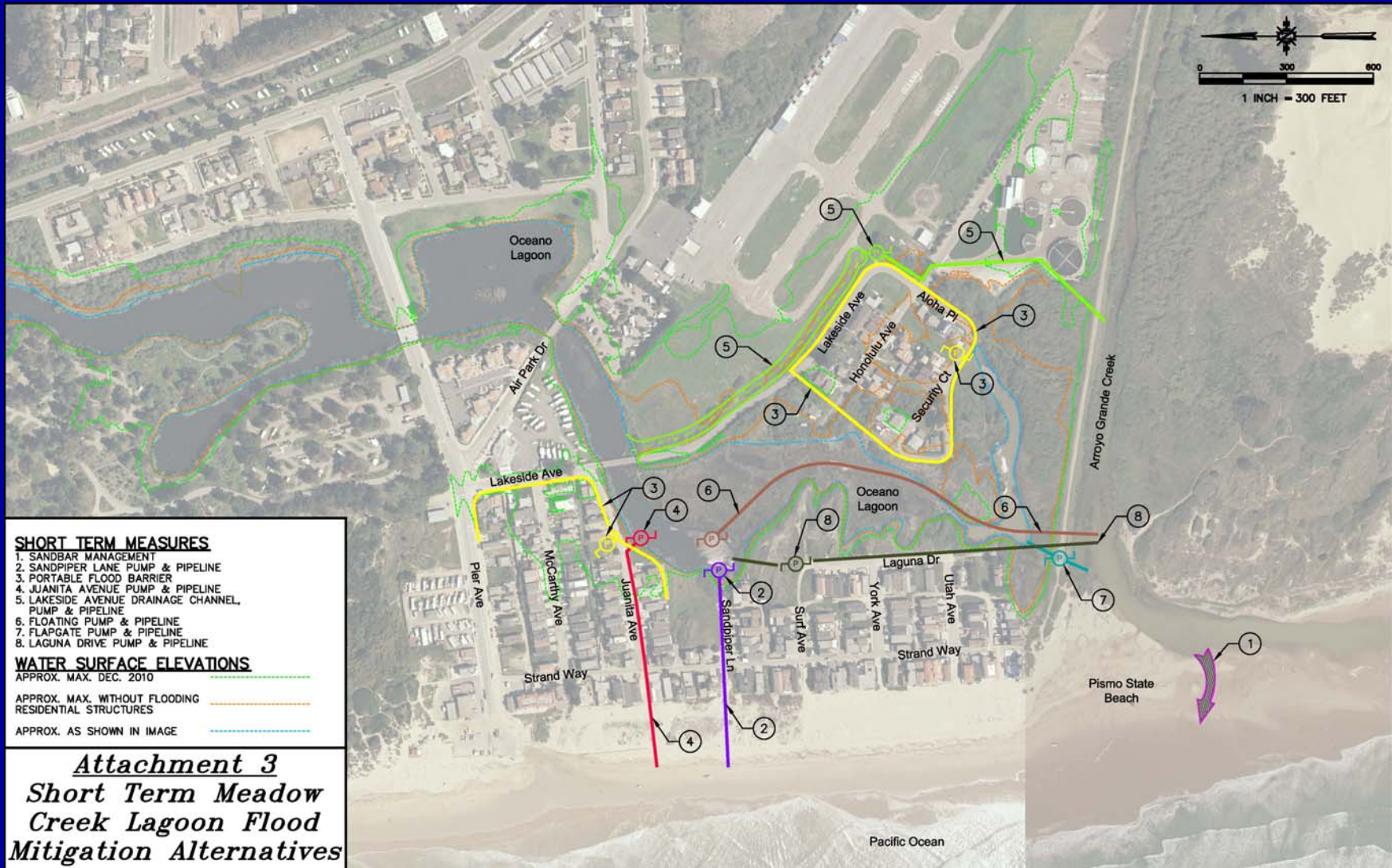
1. Focus on identifying scenarios and response measures to support emergency regulatory permits if needed
2. Develop project details & alternatives; conduct required evaluations; & analyze regulatory requirements for long-term permits.

Meadow Creek Lagoon

Water Surface Elevation impacted by:

- Sand Bar
- High Tide / Tide (flap) Gates
- Reeds and Sediment in Lagoon
- Beaver Dams

Meadow Creek Lagoon Flood Short Term Mitigation Alternatives



Lagoon Protection Sandbar Management



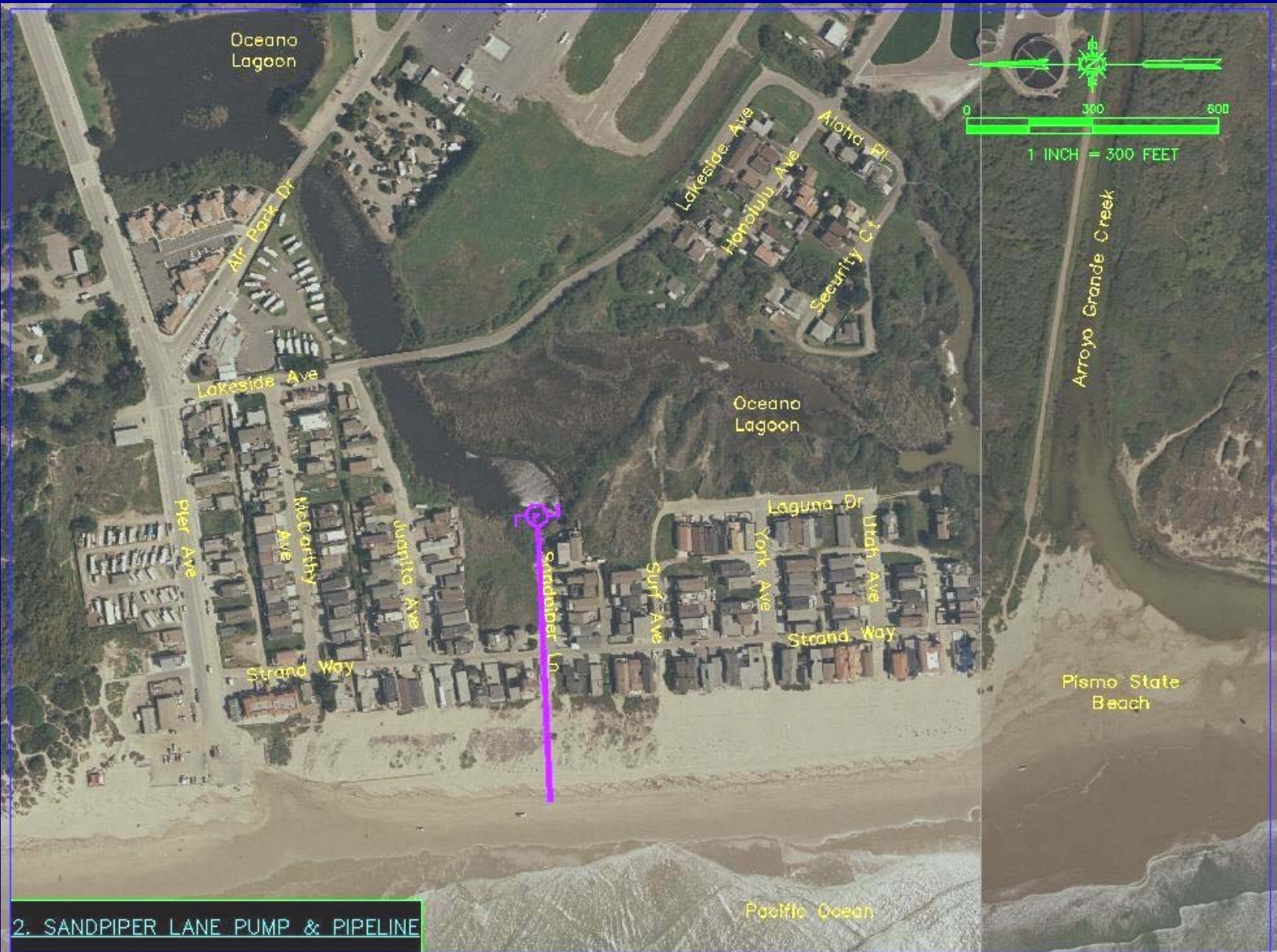
4. SANDBAR MANAGEMENT

Meadow Creek Lagoon Juanita Avenue Pump & Pipeline



1. JUANITA AVE. PUMP & PIPELINE

Meadow Creek Lagoon Sandpiper Lane Pump & Pipeline



2. SANDPIPER LANE PUMP & PIPELINE

Meadow Creek Lagoon Laguna Dr Pump & Pipeline



Meadow Creek Lagoon Floating Pump & Pipeline



5. FLOATING PUMP & PIPELINE

Meadow Creek Lagoon Flap Gate Pump & Pipeline



Meadow Creek Lagoon Lakeside Ave. Channel, Pump, & Pipeline



Meadow Creek Lagoon Portable/Temporary Flood Barrier



Next Steps

- Return to BOS August 9th with Contract for Engineering Consultant to provide:
 - Cost estimates
 - Cost benefit analysis of alternatives for both the AG levees and Meadow Creek lagoon
- Return to BOS with recommendations on Flood Control And Water Conservation District project priorities and funding.

Questions?

